

**BOROUGH OF BLOOMINGDALE  
PUBLIC NOTICE  
HILLTOP TERRACE SIDEWALK IMPROVEMENT ASSESSMENT**

**NOTICE IS HEREBY GIVEN** the Borough Council will consider the final report (dated March 2025) of the Hilltop Terrace Improvement / Sidewalk Assessment project at a regularly scheduled council meeting on April 15, 2025 and, if accepted, an ordinance confirming the assessment will be introduced. The second/final reading and public hearing of the ordinance shall be set at the time of introduction.

The final report of the Hilltop Terrace Sidewalk Assessment is available on the Borough webpage: [www.bloomingtonnj.net](http://www.bloomingtonnj.net)

*Action May be Taken*

**Public Hearing:      Tuesday April 15, 2025**  
**Time:                    6:00 P.M.**  
**Location:              Council Chambers 101 Hamburg Tpke, Bloomingdale NJ 07403**

Breeanna Smith, R.M.C.  
Municipal Clerk

DARMOFALSKI ENGINEERING ASSOCIATES, INC.

CIVIL ENGINEERING

86 NEWARK POMPTON TURNPIKE

RIVERDALE, NJ 07457

TEL: (973) 835-8300 | FAX: (973) 835-1117

**FINAL ASSESSMENT**

**CONCRETE SIDEWALK AND DRIVEWAY APRON IMPROVEMENTS**

**HILLTOP TERRACE IMPROVEMENTS**

**(OFF OF RAFKIND ROAD)**

**BOROUGH OF BLOOMINGDALE, COUNTY OF PASSAIC, STATE OF NEW JERSEY**

**DATE: March 2025**

NO.	PROPERTY LOCATION	OWNER'S NAME	OWNER'S MAILING ADDRESS	OWNER CITY, STATE	OWNER ZIP	BLOCK NO.	LOT NO.	CONCRETE SIDEWALK ASSESSMENT AREA (S.Y.)	CONCRETE APRON ASSESSMENT AREA (S.Y.)	AS-BUILT COST BASED UPON UNIT PRICE BID	APPROX. FRONTAGE
1	152 RAFKIND ROAD	APARO, JOSEPH	152 RAFKIND RD	BLOOMINGDALE, NJ	07403	5071	26	45.33	0.00	\$ 3,599.47	122.05'
2	8 HILLTOP TERRACE	SETH, VICTOR	8 HILLTOP TERR	BLOOMINGDALE, NJ	07403	5071	27	25.33	18.34	\$ 3,766.98	82.89'
3	12 HILLTOP TERRACE	FINAMORE, MICHAEL	12 HILLTOP TERR	BLOOMINGDALE, NJ	07403	5071	28	39.56	16.92	\$ 4,759.64	111.33'
4	18 HILLTOP TERRACE	CERISANO, JAMES JR & MARY L	18 HILLTOP TERRACE	BLOOMINGDALE, NJ	07403	5071	29	1.78	17.89	\$ 1,853.12	111.24'
5	22 HILLTOP TERRACE	DELIA, ANTHONY & JOAN	22 HILLTOP TERRACE	BLOOMINGDALE, NJ	07403	5071	30	30.22	22.56	\$ 4,558.21	111.13'
6	26 HILLTOP TERRACE	MATHES FAMILY TRUST	26 HILLTOP TERRACE	BLOOMINGDALE, NJ	07403	5071	31	28.44	11.67	\$ 3,374.99	70.26'
7	28 HILLTOP TERRACE	MCCOY, DAVID G	28 HILLTOP TERRACE	BLOOMINGDALE, NJ	07403	5071	32	23.56	13.87	\$ 3,197.46	70.23'
8	32 HILLTOP TERRACE	POLAZZI, GEORGE & EILEEN	32 HILLTOP TERRACE	BLOOMINGDALE, NJ	07403	5071	33	20.44	22.62	\$ 3,788.18	70.23'
9	34 HILLTOP TERRACE	JANOW, CHRIS	34 HILLTOP TERRACE	BLOOMINGDALE, NJ	07403	5071	34	24.00	12.12	\$ 3,065.64	70.26'
10	36 HILLTOP TERRACE	DAVIS, GEORGE & KATHERINE	36 HILLTOP TERRACE	BLOOMINGDALE, NJ	07403	5071	35	25.11	14.65	\$ 3,395.40	70.26'
11	40 HILLTOP TERRACE	COSTA, RICHARD & JEANETTE	40 HILLTOP TERRACE	BLOOMINGDALE, NJ	07403	5071	36	12.00	34.25	\$ 4,230.84	70.25'
12	42 HILLTOP TERRACE	AWADALLAH, NADER & HANEEN	42 HILLTOP TERR	BLOOMINGDALE, NJ	07403	5071	37	26.00	9.33	\$ 2,957.60	69.33'
13	44 HILLTOP TERRACE	JOSEPH ROSSI & LISA ROSSI	44 HILLTOP TERRACE	BLOOMINGDALE, NJ	07403	5071	38	21.56	14.26	\$ 3,076.25	64.74'
14	46 HILLTOP TERRACE	TARAKJI MOHAMED	46 HILLTOP TERR	BLOOMINGDALE, NJ	07403	5071	39	10.00	30.11	\$ 3,675.31	64.59'
15	50 HILLTOP TERRACE	FALCO, KENNETH & KRAUTH, JEANMARIE	50 HILLTOP TERRACE	BLOOMINGDALE, NJ	07403	5071	40	0.00	22.20	\$ 2,124.33	64.52'
16	52 HILLTOP TERRACE	BECK, GORDON JR & ANGELA M	52 HILLTOP TERRACE	BLOOMINGDALE, NJ	07403	5071	41	19.33	13.68	\$ 2,843.98	64.45'
17	54 HILLTOP TERRACE	WHITE DENAE & COLES SHAWN & WHITE M	54 HILLTOP TERR	BLOOMINGDALE, NJ	07403	5071	42	21.33	14.10	\$ 3,042.97	64.50'
18	56 HILLTOP TERRACE	KUSIAK BOGUSLAW S & KUSIAK PAWEL P	56 HILLTOP TERR	BLOOMINGDALE, NJ	07403	5071	43	15.33	24.95	\$ 3,605.29	64.22'
19	58 HILLTOP TERRACE	FLORA POONAM S	58 HILLTOP TERRACE	BLOOMINGDALE, NJ	07403	5071	44	17.33	23.62	\$ 3,636.81	64.11'
20	62 HILLTOP TERRACE	APONTE, ERIC & DANIELLA G	62 HILLTOP TERR	BLOOMINGDALE, NJ	07403	5071	45	25.78	9.98	\$ 3,001.74	64.03'
21	64 HILLTOP TERRACE	CHIRIACO, MICHELE & WHITE, LAURIE	64 HILLTOP TERR	BLOOMINGDALE, NJ	07403	5071	46	0.00	0.00	\$ -	52.11'
22	66 HILLTOP TERRACE	ANDERSEN, JENNIFER	66 HILLTOP TERR	BLOOMINGDALE, NJ	07403	5071	47	23.11	13.74	\$ 3,149.89	64.22'
23	68 HILLTOP TERRACE	GIANGRANDE, NICHOLAS & JESSICA	68 HILLTOP TERR	BLOOMINGDALE, NJ	07403	5071	48	24.22	12.02	\$ 3,073.61	69.70'
24	70 HILLTOP TERRACE	VAVRIK, WILLIAM JAMES JR	70 HILLTOP TERR	BLOOMINGDALE, NJ	07403	5071	49	25.33	14.81	\$ 3,429.05	75.00'

DARMOFALSKI ENGINEERING ASSOCIATES, INC.

CIVIL ENGINEERING

86 NEWARK POMPTON TURNPIKE

RIVERDALE, NJ 07457

TEL: (973) 835-8300 | FAX: (973) 835-1117

**FINAL ASSESSMENT**

**CONCRETE SIDEWALK AND DRIVEWAY APRON IMPROVEMENTS**

**HILLTOP TERRACE IMPROVEMENTS**

(OFF OF RAFKIND ROAD)

BOROUGH OF BLOOMINGDALE, COUNTY OF PASSAIC, STATE OF NEW JERSEY

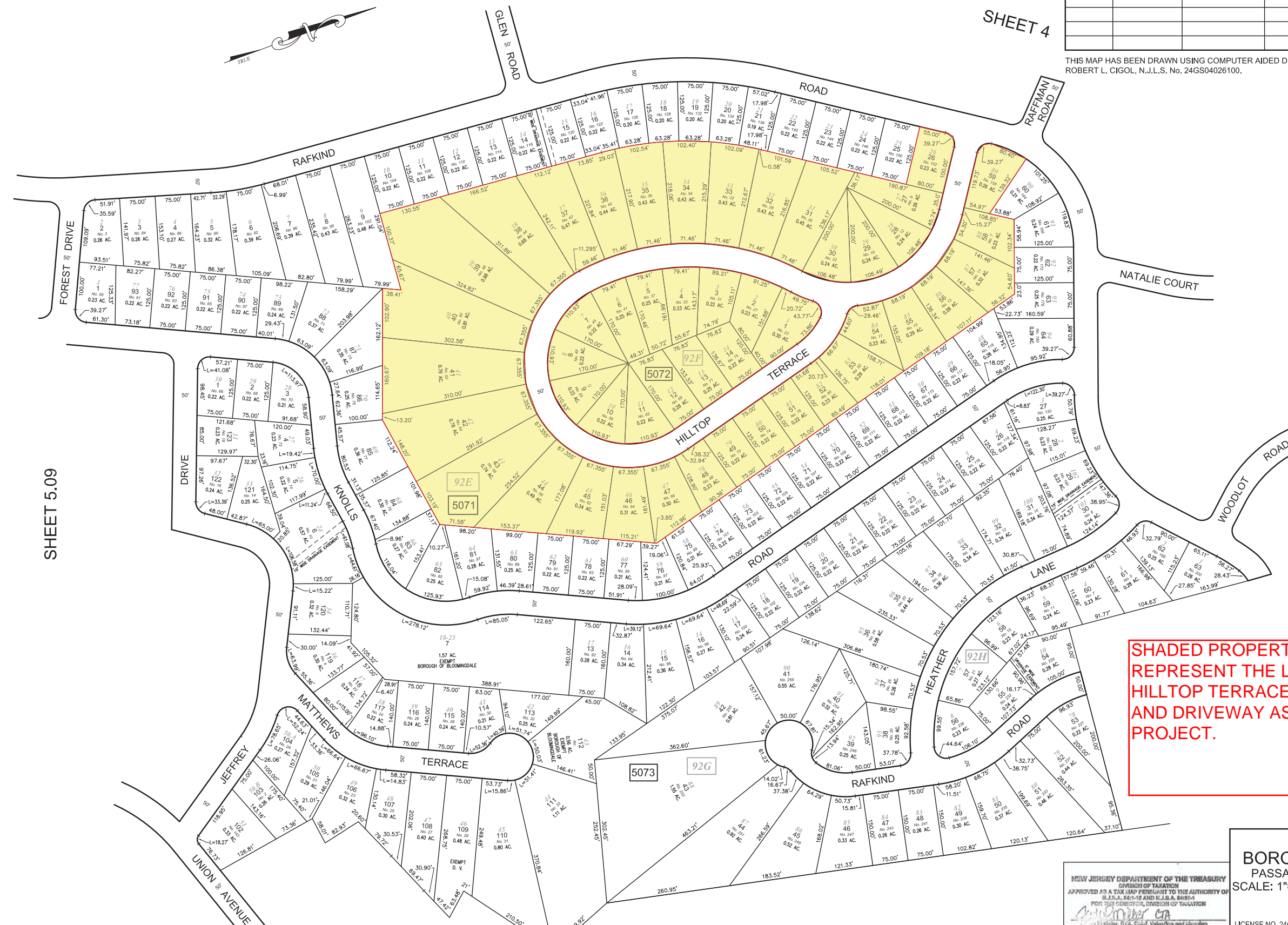
DATE: March 2025

NO.	PROPERTY LOCATION	OWNER'S NAME	OWNER'S MAILING ADDRESS	OWNER CITY, STATE	OWNER ZIP	BLOCK NO.	LOT NO.	CONCRETE SIDEWALK ASSESSMENT AREA (S.Y.)	CONCRETE APRON ASSESSMENT AREA (S.Y.)	AS-BUILT COST BASED UPON UNIT PRICE BID	APPROX. FRONTAGE
25	74 HILLTOP TERRACE	BEAZLEY, LLOYD W & YVONNE I	74 HILLTOP TERRACE	BLOOMINGDALE, NJ	07403	5071	50	28.00	12.32	\$ 3,401.85	75.00'
26	76 HILLTOP TERRACE	OLIMPIO, GINO & KRISTINA	76 HILLTOP TERRACE	BLOOMINGDALE, NJ	07403	5071	51	28.67	10.83	\$ 3,312.25	75.00'
27	80 HILLTOP TERRACE	CARDY, DAVID J	80 HILLTOP TERRACE	BLOOMINGDALE, NJ	07403	5071	52	26.22	11.50	\$ 3,182.91	71.33'
28	82 HILLTOP TERRACE	MEYERS, ALAN L	82 HILLTOP TERRACE	BLOOMINGDALE, NJ	07403	5071	53	21.78	10.14	\$ 2,699.77	63.16'
29	17 HILLTOP TERRACE	JOSEPH, JUDITH	17 HILLTOP TERR	BLOOMINGDALE, NJ	07403	5071	54	45.33	13.45	\$ 4,886.42	134.41'
30	15 HILLTOP TERRACE	GIANNINI, PETER W & EITEL ERIN E	15 HILLTOP TERR	BLOOMINGDALE, NJ	07403	5071	55	22.89	14.32	\$ 3,188.07	65.38'
31	13 HILLTOP TERRACE	HOLTJE, SCOTT & NANCY	13 HILLTOP TERRACE	BLOOMINGDALE, NJ	07403	5071	56	19.11	18.67	\$ 3,303.82	65.40'
32	11 HILLTOP TERRACE	GONZALEZ, ANTHONY & SARA	11 HILLTOP TERR	BLOOMINGDALE, NJ	07403	5071	57	22.44	15.82	\$ 3,295.69	65.43'
33	7 HILLTOP TERRACE	SUTTER, ROBERT A JR	7 HILLTOP TERR	BLOOMINGDALE, NJ	07403	5071	58	23.56	14.00	\$ 3,210.11	67.41'
34	158 RAFKIND ROAD	TRACEY, THOMAS & BETH	158 RAFKIND ROAD	BLOOMINGDALE, NJ	07403	5071	59	46.22	0.00	\$ 3,670.04	141.59'
35	23 HILLTOP TERRACE	LUSKI, JAMES & ALLYSON	23 HILLTOP TERRACE	BLOOMINGDALE, NJ	07403	5072	1	127.56	10.76	\$ 11,157.70	298.26'
36	27 HILLTOP TERRACE	BARKER, MELISSA & AARON	27 HILLTOP TERR	BLOOMINGDALE, NJ	07403	5072	2	32.89	18.28	\$ 4,360.56	93.42'
37	31 HILLTOP TERRACE	ANNECCHINO, ANGELA M	31 HILLTOP TERR	BLOOMINGDALE, NJ	07403	5072	3	32.22	17.08	\$ 4,192.63	91.42'
38	33 HILLTOP TERRACE	POLING, DOLORES	P.O. BOX 201	BLOOMINGDALE, NJ	07403	5072	4	28.67	11.21	\$ 3,349.09	81.37'
39	37 HILLTOP TERRACE	37 HILLTOP LLC	37 HILLTOP TERR	BLOOMINGDALE, NJ	07403	5072	5	33.00	17.01	\$ 4,248.43	81.33'
40	41 HILLTOP TERRACE	RANKIN, DARRYL & JOCELYN	41 HILLTOP TERRACE	BLOOMINGDALE, NJ	07403	5072	6	28.00	16.43	\$ 3,795.60	81.35'
41	45 HILLTOP TERRACE	SMITH, THOMAS J & PATRICIA C	45 HILLTOP TERRACE	BLOOMINGDALE, NJ	07403	5072	7	40.22	17.11	\$ 4,831.18	117.87'
42	49 HILLTOP TERRACE	JOEL, WILLIAM V & KATIE L	49 HILLTOP TERRACE	BLOOMINGDALE, NJ	07403	5072	8	43.56	17.31	\$ 5,114.45	117.50'
43	55 HILLTOP TERRACE	TORRES-PIETRI IRIS M & PIETRI L A	55 HILLTOP TERR	BLOOMINGDALE, NJ	07403	5072	9	41.11	18.64	\$ 5,047.64	116.92'
44	59 HILLTOP TERRACE	REGER, CHARLES & TATIANA	59 HILLTOP TERRACE	BLOOMINGDALE, NJ	07403	5072	10	42.89	15.30	\$ 4,869.11	116.61'
45	65 HILLTOP TERRACE	WILLIS, ROBERT & CHRISTINA	65 HILLTOP TERRACE	BLOOMINGDALE, NJ	07403	5072	11	41.56	19.22	\$ 5,138.39	116.80'
46	69 HILLTOP TERRACE	MARTIN, STEVEN & JOAN C	69 HILLTOP TERRACE	BLOOMINGDALE, NJ	07403	5072	12	23.78	16.04	\$ 3,423.14	75.00'
47	71 HILLTOP TERRACE	ADAMO, DANIEL & ROWEK, CHRISTINA	71 HILLTOP TERR	BLOOMINGDALE, NJ	07403	5072	13	25.78	16.85	\$ 3,659.35	75.00'
48	75 HILLTOP TERRACE	WALSH, FRANCIS J & CATHERINE	75 HILLTOP TERRACE	BLOOMINGDALE, NJ	07403	5072	14	20.89	11.38	\$ 2,747.17	75.00'
<b>Totals =</b>								<b>1,351.44</b>	<b>731.32</b>	<b>\$ 177,292.12</b>	

The final cost per property is based upon the unit prices awarded to Your Way Construction in the amount of \$79.40/SY for 4" thick sidewalks plus \$95.70/SY for 6" thick reinforced driveway apron/walks.

REVISIONS			
DATE	L. S. NAME	LIC. NO.	DESCRIPTION

THIS MAP HAS BEEN DRAWN USING COMPUTER AIDED DRAFTING/DESIGN (CAD/D) UNDER THE SUPERVISION OF ROBERT L. CIGOL, N.J.L.S. No. 24GS04026100.

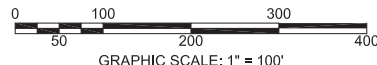


SHEET 5.09

SHEET 4.09

SHEET 5.06

**SHADED PROPERTIES REPRESENT THE LIMITS OF THE HILLTOP TERRACE SIDEWALK AND DRIVEWAY ASSESSMENT PROJECT.**



SHEET 5.05

SHEET 5.06

NEW JERSEY DEPARTMENT OF THE TREASURY  
 DIVISION OF TAXATION  
 APPROVED AS A TAX MAP PURSUANT TO THE AUTHORITY OF  
 N.J.S.A. 54:1-6 AND N.J.S.A. 54:5-4  
 FOR THE DIRECTOR, DIVISION OF TAXATION

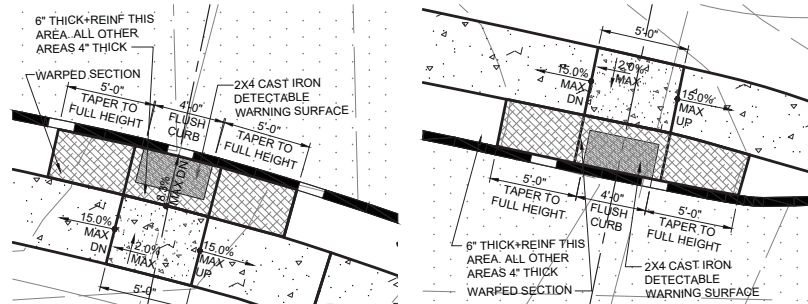
*Robert L. Cigol*  
 Robert L. Cigol, Principal Field Representative

DATE: DEC 30 2014 SERIAL NO. 1051

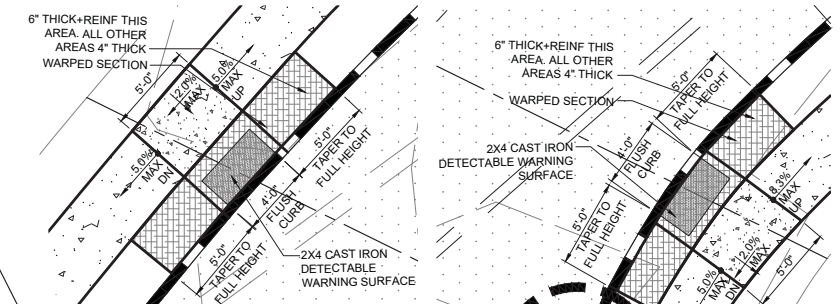
**TAX MAP**  
 BOROUGH OF BLOOMINGDALE  
 PASSAIC COUNTY, NEW JERSEY  
 SCALE: 1"=100' 01/01/2014

**ROBERT L. CIGOL**  
 NEW JERSEY LICENSED LAND SURVEYOR  
 LICENSE NO. 24GS04026100 CERTIFICATE OF AUTHORIZATION NO. 24GA27919000

**DMC ASSOCIATES, INC.**  
 211 MAIN STREET  
 BUTLER, N.J. 07405  
 TO SHOW CONDITIONS AS OF 01/01/2014



HILLTOP TERRACE CURB RAMP  
DETAIL - NORTH SIDE  
SCALE: 1"=5'



HILLTOP TERRACE CURB RAMP  
DETAIL - SOUTH SIDE  
SCALE: 1"=5'

STD. ITEM NO.	TO BE CONSTRUCTED	UNITS	CONTRACT QUANTITY
159138M	HMA PATCH	T	AS DIRECTED
401009P	HMA MILLING, 2" OR LESS	SY	24.32
401030M	TACK COAT	GAL	195
401042M	HOT MIX ASPHALT 9.5 M 64 SURFACE COURSE	T	304
401066M	HOT MIX ASPHALT 9.5 M 64 INTERMEDIATE COURSE	T	AS DIRECTED
602012M	INLET, TYPE B	U	7
606012P	CONCRETE SIDEWALK, 4" THICK	SY	483
606024P	CONCRETE ADA RAMP, 6" THICK	SY	17
606057P	CONCRETE DRIVEWAY AND SIDEWALK, REINFORCED, 6" THICK	SY	226
606084P	DETECTABLE WARNING SURFACE	U	4
607021P	9"x18" CONCRETE VERTICAL CURB	LF	1383
610003M	TRAFFIC STRIPES, 4"	LF	100
610008M	TRAFFIC MARKING SYMBOLS	SF	48
610016M	TRAFFIC MARKING LINES, 12"	LF	95
610017M	TRAFFIC MARKING LINES, 24"	LF	18
612003P	REGULATORY AND WARNING SIGN	U	1
612006P	GUIDE SIGN, TYPE GA, STEEL "U" POST SUPPORTS	U	2
612032P	CUSTOM SIGN	U	1
651255M	RESET WATER VALVE BOX	U	8
652432M	RESET MANHOLE, USING EXISTING CASTING	U	5
653084M	RESET GAS VALVE BOX	U	10
804000P	TOPSOIL SPREADING, 4" THICK	SY	634
806015P	FERTILIZING AND SEEDING, TYPE D	SY	634
809003M	STRAW MULCHING	SY	634
MMR031M	REMOVAL OF CURB	LF	1383
MMR034M	REMOVAL OF SIDEWALK & DRIVEWAY APRONS	SY	727
MMR088M	SAWCUTTING	LF	267
N/A	SANITARY SEWER LATERAL SERVICE CONN REPLACEMENT	U	12
N/A	SANITARY SEWER LATERAL SERVICE CONN ABANDONMENT	U	1
N/A	SEWER MAIN REPLACEMENT - 8" Ø PVC SDR 35 INCL. COUPLINGS	LF	32

602012M - REMOVE EXISTING INLET AND REPLACE WITH TYPE "B" INLET  
1 UNIT  
REMOVE EXIST. TYPE "B" INLET & CASTINGS. INSTALL NEW TYPE "B" PRECAST CONCRETE INLET. SEE DETAIL ON SHEET "14"  
INSTALL NEW TYPE "B" H.D. FRAME, TYPE "N" ECO - PHASE II CURB PIECE & BICYCLE SAFE GRATE  
TG = 424.71  
HEAD = 425.21

CONSTRUCTION  
607075P  
DROP CURB SECTION - 15 LF  
606057P  
6" THK. REINF CONCRETE WALK AND APRON - 11 SY  
MMR088M  
SAWCUT - 15 LF  
159138M  
AS DIRECTED - BITUM D.WAY, REPAIR PATCH

CONSTRUCTION  
607075P  
DROP CURB SECTION - 16 LF  
606057P  
6" THK. REINF CONCRETE WALK AND APRON - 18 SY  
MMR088M  
SAWCUT - 14 LF  
159138M  
AS DIRECTED - BITUM D.WAY, REPAIR PATCH

651255M  
8 UNITS  
RESET EXISTING WATER SERVICE VALVE BOXES AS REQUIRED. TYPICAL

SANITARY SEWER  
VERIFY SEWER LATERAL HAS BEEN CAPPED. SEE DETAIL ON SHEET 6 IF LATERAL HAS NOT BEEN CAPPED.  
1 UNIT

401009P  
2,432 SY - HMA MILLING, MINIMUM 2" DEPTH, FULL WIDTH

401042M  
304 TON - HMA 9.5 M 64 OVERLAY, MINIMUM 2" THICK

401030M  
195 GAL - TACK COAT BETWEEN EXIST. SURFACE COURSE & OVERLAY

401066M  
IF AND WHERE DIRECTED BY ENGINEER OR BLOOMINGDALE DPW. PROVIDE A LEVELING COURSE

602012M - REMOVE EXISTING INLET AND REPLACE WITH TYPE "B" INLET  
1 UNIT  
REMOVE EXIST. TYPE "B" INLET & CASTINGS. INSTALL NEW TYPE "B" PRECAST CONCRETE INLET. SEE DETAIL ON SHEET "14"  
INSTALL NEW TYPE "B" H.D. FRAME, TYPE "N" ECO - PHASE II CURB PIECE & BICYCLE SAFE GRATE  
TG = 410.58  
HEAD = 411.08

612003P - REGULATORY SIGN REPLACEMENT  
1 UNIT  
REMOVE EXISTING REGULATORY SIGN AND POST. INSTALL NEW IN EXISTING LOCATION AS SHOWN. MOUNT IN STEEL BREAKAWAY U-POST  
R1-1 "STOP" (30" X 30")  
DIAMOND GRADE 3.

END MILLING & PAVING  
MMR088M  
SAWCUT EXIST. PAVEMENT AS PER FIELD CONDITIONS  
43 LF

612006P - GUIDE SIGN REPLACEMENT  
2 UNITS  
REMOVE EXISTING GUIDE SIGN AND POST. INSTALL NEW IN EXISTING LOCATION AS SHOWN. MOUNT IN STEEL BREAKAWAY U-POST "HILLTOP TERRACE" (24" X 6") "BARKIND ROAD" (24" X 6")  
DIAMOND GRADE 3.

CONSTRUCTION  
607075P  
DROP CURB SECTION - 19 LF  
606057P  
6" THK. REINF CONCRETE WALK AND APRON - 23 SY  
MMR088M  
SAWCUT - 21 LF  
159138M  
AS DIRECTED - BITUM D.WAY, REPAIR PATCH

652432M - RESET MANHOLE CASTINGS  
5 UNITS  
RESET EXISTING SANITARY MANHOLE CASTING AS REQUIRED. TYPICAL

651255M  
8 UNITS  
RESET EXISTING WATER SERVICE VALVE BOXES AS REQUIRED TYPICAL

602012M - REMOVE EXISTING INLET AND REPLACE WITH TYPE "B" INLET  
1 UNIT  
REMOVE EXIST. TYPE "B" INLET & CASTINGS. INSTALL NEW TYPE "B" PRECAST CONCRETE INLET. SEE DETAIL ON SHEET "14"  
INSTALL NEW TYPE "B" H.D. FRAME, TYPE "N" ECO - PHASE II CURB PIECE & BICYCLE SAFE GRATE  
TG = 426.05  
HEAD = 426.55

CONSTRUCTION  
607075P  
DROP CURB SECTION - 20 LF  
606057P  
6" THK. REINF CONCRETE WALK AND APRON - 21 SY  
MMR088M  
SAWCUT - 20 LF  
159138M  
AS DIRECTED - BITUM D.WAY, REPAIR PATCH

606012P  
CONCRETE SIDEWALK, 4" THK  
483 SY

606024P  
CONCRETE SIDEWALK, REINFORCED,  
6" THK  
244 SY

607075P  
CONCRETE BLOCK CURB  
1383 LF

804000P, 806015P, 809003M  
TURF RESTORATION, 4" THK  
634 SY

CONSTRUCTION  
607075P  
DROP CURB SECTION - 20 LF  
606057P  
6" THK. REINF CONCRETE WALK AND APRON - 21 SY  
MMR088M  
SAWCUT - 21 LF  
159138M  
AS DIRECTED - BITUM D.WAY, REPAIR PATCH

610003M  
100 LF - DOUBLE SOLID YELLOW LINE 4", THERMOPLASTIC

610008M  
48 SF - "STOP" WARNING MESSAGE, THERMOPLASTIC

6100016M  
98 LF - SINGLE SOLID WHITE LINE 12" WIDE X 6'-0" LONG @ 3'-0" O.C., CROSSWALK STRIPING THERMOPLASTIC

6100017M  
18 LF - STOP BAR WHITE LINE 24" WIDE, THERMOPLASTIC

MMR031M  
CURB REMOVAL  
1383 LF

MMR034M  
REMOVAL OF SIDEWALK & DRIVEWAY APRONS  
727 SY

CONSTRUCTION  
607075P  
DROP CURB SECTION - 20 LF  
606057P  
6" THK. REINF CONCRETE WALK AND APRON - 20 SY  
MMR088M  
SAWCUT - 19 LF  
159138M  
AS DIRECTED - BITUM D.WAY, REPAIR PATCH

CONSTRUCTION  
607075P  
DROP CURB SECTION - 25 LF  
606057P  
6" THK. REINF CONCRETE WALK AND APRON - 27 SY  
MMR088M  
SAWCUT - 26 LF  
159138M  
AS DIRECTED - BITUM D.WAY, REPAIR PATCH

CONSTRUCTION  
607075P  
DROP CURB SECTION - 12 LF  
606057P  
6" THK. REINF CONCRETE WALK AND APRON - 14 SY  
MMR088M  
SAWCUT - 13 LF  
159138M  
AS DIRECTED - BITUM D.WAY, REPAIR PATCH

CONSTRUCTION  
607075P  
DROP CURB SECTION - 12 LF  
606057P  
6" THK. REINF CONCRETE WALK AND APRON - 12 SY  
MMR088M  
SAWCUT - 13 LF  
159138M  
AS DIRECTED - BITUM D.WAY, REPAIR PATCH

CONSTRUCTION  
607075P  
DROP CURB SECTION - 15 LF  
606057P  
6" THK. REINF CONCRETE WALK AND APRON - 15 SY  
MMR088M  
SAWCUT - 16 LF  
159138M  
AS DIRECTED - BITUM D.WAY, REPAIR PATCH

CONSTRUCTION  
607075P  
DROP CURB SECTION - 25 LF  
606057P  
6" THK. REINF CONCRETE WALK AND APRON - 25 SY  
MMR088M  
SAWCUT - 21 LF  
159138M  
AS DIRECTED - BITUM D.WAY, REPAIR PATCH

REMOVE AND CONSTRUCTION  
REMOVE EXISTING WALKS AS REQ'D AND CURBING TO NEAREST EXP. JOINT. CONSTRUCT NEW ADA RAMPS W/ CURBING. SEE DETAIL ON THIS SHEET.

CONSTRUCTION  
607075P  
DROP CURB SECTION - 25 LF  
606057P  
6" THK. REINF CONCRETE WALK AND APRON - 27 SY  
MMR088M  
SAWCUT - 26 LF  
159138M  
AS DIRECTED - BITUM D.WAY, REPAIR PATCH

CONSTRUCTION  
607075P  
DROP CURB SECTION - 12 LF  
606057P  
6" THK. REINF CONCRETE WALK AND APRON - 14 SY  
MMR088M  
SAWCUT - 13 LF  
159138M  
AS DIRECTED - BITUM D.WAY, REPAIR PATCH

CONSTRUCTION  
607075P  
DROP CURB SECTION - 12 LF  
606057P  
6" THK. REINF CONCRETE WALK AND APRON - 12 SY  
MMR088M  
SAWCUT - 13 LF  
159138M  
AS DIRECTED - BITUM D.WAY, REPAIR PATCH

CONSTRUCTION  
607075P  
DROP CURB SECTION - 15 LF  
606057P  
6" THK. REINF CONCRETE WALK AND APRON - 15 SY  
MMR088M  
SAWCUT - 16 LF  
159138M  
AS DIRECTED - BITUM D.WAY, REPAIR PATCH

CONSTRUCTION  
607075P  
DROP CURB SECTION - 19 LF  
606057P  
6" THK. REINF CONCRETE WALK AND APRON - 23 SY  
MMR088M  
SAWCUT - 21 LF  
159138M  
AS DIRECTED - BITUM D.WAY, REPAIR PATCH

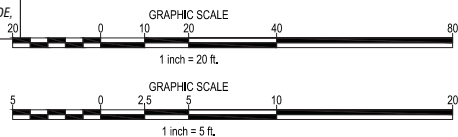
CONSTRUCTION  
607075P  
DROP CURB SECTION - 11 LF  
606057P  
6" THK. REINF CONCRETE WALK AND APRON - 9 SY  
MMR088M  
SAWCUT - 11 LF  
159138M  
AS DIRECTED - BITUM D.WAY, REPAIR PATCH

HOUSE No.	REFERENCE MANHOLE	DISTANCE	DIRECTION
7	MH10	39.5'	NW
8	SEE NOTE		
11	MH9	100.6'	NW
12	MH9	86.0'	NW
13	MH9	45.6'	NW
15	SEE NOTE		
17	MH9	69.4'	S
18	SEE NOTE		
22	MH9	121.1'	S
23	MH3A	170.4'	NE
26	MH3A	70.9'	NE
27	MH3A	45.5'	NE

NOTE: SANITARY LATERAL COULD NOT BE LOCATED AT THIS ADDRESS WITH TV. LOCATION SHOWN IS FOR COST PURPOSES ONLY. CONTRACTOR IS RESPONSIBLE FOR VERIFYING LOCATION OF ALL EXISTING SANITARY LATERAL SERVICE PRIOR TO REPLACING.

HILLTOP TERRACE - ROAD IMPROVEMENT PLAN  
STA. 0+37.14 to STA. 7+00.00/ 21+00.00

SCALE: 1"=20'



NO.	DATE	BY	REVISIONS

DARMOFALSKI ENGINEERING ASSOCIATES, INC. ©  
This drawing and all information contained herein is proprietary information of DARMOFALSKI ENGINEERING ASSOCIATES, INC. and may not be copied or reproduced, either in whole or in part, by any methods without the written permission of DARMOFALSKI ENGINEERING ASSOCIATES, INC. © This drawing shall not be considered valid until the engineers signature and raised seal has been affixed to the drawing.

Dwg. Location		Network		CERTIFICATE OF AUTHORIZATION NO. 24GA27921100	
Drawn	MZ	Checked	AP	Darmofalski Engineering Assoc., Inc.	
Scale	AS NOTED	Date	10/01/2022	Tel. 973.835.8300 Civil Engineers Fax 973.835.1117	
Tracer				86 Newark-Pompton Turnpike - Riverdale, N.J. 07457	
ENGINEERS SEAL & SIGNATURE				Sheet Title	
THOMAS A BOORADY, P.E. N.J. Professional Engineer License #43110				ROAD IMPROVEMENT PLAN - HILLTOP TERRACE STA 0+37.14 TO STA 7+00.00/ 21+00.00	
Project Title				Proposed Road Improvements at Hilltop Terrace situated in the Borough of Bloomingdale, Passaic County, New Jersey	

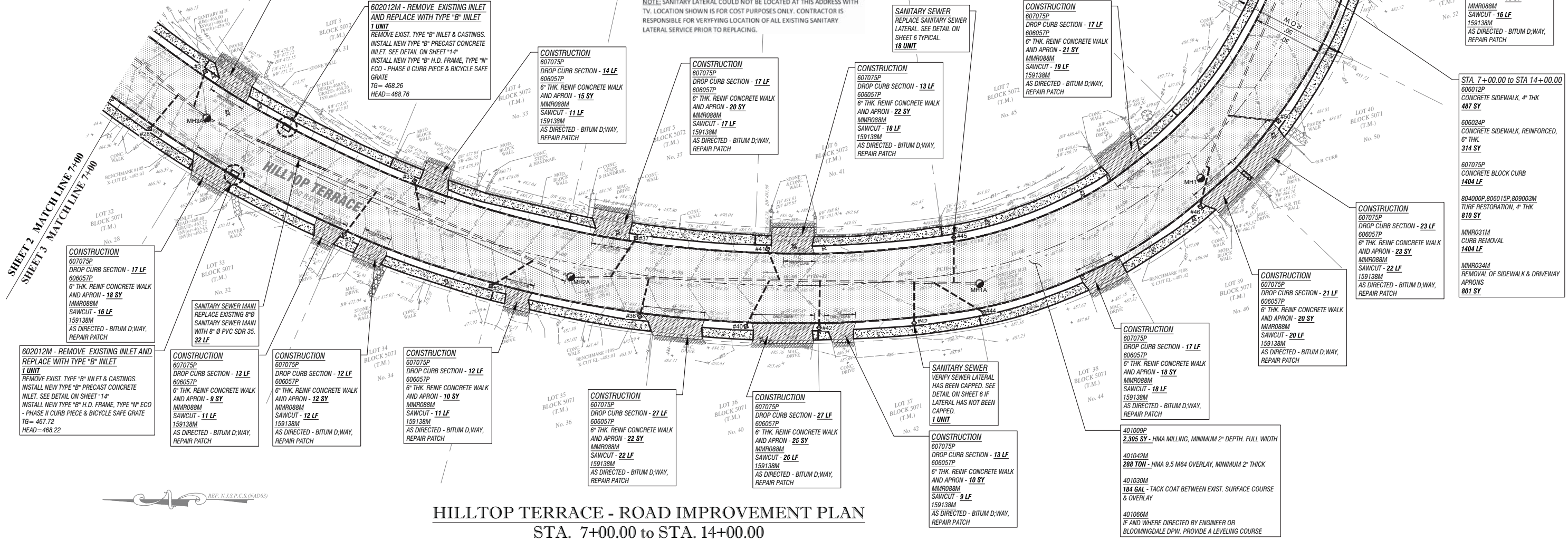
STD. ITEM NO.	TO BE CONSTRUCTED	UNITS	CONTRACT QUANTITY
159138M	HMA PATCH	T	AS DIRECTED
401009P	HMA MILLING, 2" OR LESS	SY	2305
401030M	TACK COAT	GAL	184
401042M	HOT MIX ASPHALT 9.5 M 64 SURFACE COURSE	T	288
401066M	HOT MIX ASPHALT 9.5 M 64 INTERMEDIATE COURSE	T	AS DIRECTED
602012M	INLET, TYPE B	U	2
606012P	CONCRETE SIDEWALK, 4" THICK	SY	487
606057P	CONCRETE DRIVEWAY AND SIDEWALK, REINFORCED, 6" THICK	SY	314
607021P	9"x18" CONCRETE VERTICAL CURB	LF	1404
651255M	RESET WATER VALVE BOX	U	12
652432M	RESET MANHOLE, USING EXISTING CASTING	U	5
653084M	RESET GAS VALVE BOX	U	11
804000P	TOPSOIL SPREADING, 4" THICK	SY	810
809015P	FERTILIZING AND SEEDING, TYPE D	SY	810
809030M	STRAW MULCHING	SY	810
MMR031M	REMOVAL OF CURB	LF	1404
MMR034M	REMOVAL OF SIDEWALK & DRIVEWAY APRONS	SY	801
MMR088M	SAWCUTTING	LF	299
N/A	SANITARY SEWER LATERAL SERVICE CONN REPLACEMENT	U	18
N/A	SANITARY SEWER LATERAL SERVICE CONN ABANDONMENT	U	2
N/A	SEWER MAIN REPLACEMENT - 8" Ø PVC SDR 35 INCL. COUPLINGS	LF	32

HOUSE No.	REFERENCE MANHOLE	DISTANCE	DIRECTION
28	SEE NOTE		
31	SEE NOTE		
32	MH2A	90.0'	NW
33	MH2A	69.4'	NE
34	SEE NOTE		
36	MH2A	32.3'	NW
37	MH2A	15.8'	NE
40	MH2A	84.2'	NW
41	MH2A	88.4'	NE
42	MH2A	105.9'	NW
44	MH2A	155.1'	SW
45	MH2A	163.6'	NE
46	SEE NOTE		
49	MH2	70.8'	NE
50	MH2	135.5'	SW
52	MH2	46.3'	SW
54	MH2A	3.5'	S
55	MH2A	4.9'	NE

NOTE: SANITARY LATERAL COULD NOT BE LOCATED AT THIS ADDRESS WITH TV. LOCATION SHOWN IS FOR COST PURPOSES ONLY. CONTRACTOR IS RESPONSIBLE FOR VERIFYING LOCATION OF ALL EXISTING SANITARY LATERAL SERVICE PRIOR TO REPLACING.

SHEET 2 MATCH LINE 7+00  
SHEET 3 MATCH LINE 7+00

SHEET 4 MATCH LINE 14+00  
SHEET 3 MATCH LINE 14+00



CONSTRUCTION  
607075P  
DROP CURB SECTION - 16 LF  
606057P  
6" THK. REINF CONCRETE WALK AND APRON - 21 SY  
MMR088M  
SAWCUT - 19 LF  
159138M  
AS DIRECTED - BITUM D,WAY, REPAIR PATCH

602012M - REMOVE EXISTING INLET AND REPLACE WITH TYPE "B" INLET  
1 UNIT  
REMOVE EXIST. TYPE "B" INLET & CASTINGS. INSTALL NEW TYPE "B" PRECAST CONCRETE INLET. SEE DETAIL ON SHEET "14"  
INSTALL NEW TYPE "B" H.D. FRAME, TYPE "N" ECO - PHASE II CURB PIECE & BICYCLE SAFE GRATE  
TG= 468.26  
HEAD=468.78

CONSTRUCTION  
607075P  
DROP CURB SECTION - 14 LF  
606057P  
6" THK. REINF CONCRETE WALK AND APRON - 15 SY  
MMR088M  
SAWCUT - 11 LF  
159138M  
AS DIRECTED - BITUM D,WAY, REPAIR PATCH

CONSTRUCTION  
607075P  
DROP CURB SECTION - 17 LF  
606057P  
6" THK. REINF CONCRETE WALK AND APRON - 20 SY  
MMR088M  
SAWCUT - 17 LF  
159138M  
AS DIRECTED - BITUM D,WAY, REPAIR PATCH

CONSTRUCTION  
607075P  
DROP CURB SECTION - 13 LF  
606057P  
6" THK. REINF CONCRETE WALK AND APRON - 22 SY  
MMR088M  
SAWCUT - 18 LF  
159138M  
AS DIRECTED - BITUM D,WAY, REPAIR PATCH

CONSTRUCTION  
607075P  
DROP CURB SECTION - 17 LF  
606057P  
6" THK. REINF CONCRETE WALK AND APRON - 21 SY  
MMR088M  
SAWCUT - 19 LF  
159138M  
AS DIRECTED - BITUM D,WAY, REPAIR PATCH

CONSTRUCTION  
607075P  
DROP CURB SECTION - 16 LF  
606057P  
6" THK. REINF CONCRETE WALK AND APRON - 15 SY  
MMR088M  
SAWCUT - 14 LF  
159138M  
AS DIRECTED - BITUM D,WAY, REPAIR PATCH

CONSTRUCTION  
607075P  
DROP CURB SECTION - 14 LF  
606057P  
6" THK. REINF CONCRETE WALK AND APRON - 15 SY  
MMR088M  
SAWCUT - 16 LF  
159138M  
AS DIRECTED - BITUM D,WAY, REPAIR PATCH

STA. 7+00.00 TO STA 14+00.00  
606012P  
CONCRETE SIDEWALK, 4" THK  
487 SY  
606024P  
CONCRETE SIDEWALK, REINFORCED, 6" THK.  
314 SY  
607075P  
CONCRETE BLOCK CURB  
1404 LF  
804000P,806015P,809003M  
TURF RESTORATION, 4" THK  
810 SY  
MMR031M  
CURB REMOVAL  
1404 LF  
MMR034M  
REMOVAL OF SIDEWALK & DRIVEWAY APRONS  
801 SY

CONSTRUCTION  
607075P  
DROP CURB SECTION - 23 LF  
606057P  
6" THK. REINF CONCRETE WALK AND APRON - 23 SY  
MMR088M  
SAWCUT - 22 LF  
159138M  
AS DIRECTED - BITUM D,WAY, REPAIR PATCH

CONSTRUCTION  
607075P  
DROP CURB SECTION - 21 LF  
606057P  
6" THK. REINF CONCRETE WALK AND APRON - 20 SY  
MMR088M  
SAWCUT - 20 LF  
159138M  
AS DIRECTED - BITUM D,WAY, REPAIR PATCH

CONSTRUCTION  
607075P  
DROP CURB SECTION - 17 LF  
606057P  
6" THK. REINF CONCRETE WALK AND APRON - 18 SY  
MMR088M  
SAWCUT - 18 LF  
159138M  
AS DIRECTED - BITUM D,WAY, REPAIR PATCH

CONSTRUCTION  
607075P  
DROP CURB SECTION - 27 LF  
606057P  
6" THK. REINF CONCRETE WALK AND APRON - 25 SY  
MMR088M  
SAWCUT - 26 LF  
159138M  
AS DIRECTED - BITUM D,WAY, REPAIR PATCH

CONSTRUCTION  
607075P  
DROP CURB SECTION - 27 LF  
606057P  
6" THK. REINF CONCRETE WALK AND APRON - 22 SY  
MMR088M  
SAWCUT - 22 LF  
159138M  
AS DIRECTED - BITUM D,WAY, REPAIR PATCH

CONSTRUCTION  
607075P  
DROP CURB SECTION - 12 LF  
606057P  
6" THK. REINF CONCRETE WALK AND APRON - 10 SY  
MMR088M  
SAWCUT - 11 LF  
159138M  
AS DIRECTED - BITUM D,WAY, REPAIR PATCH

CONSTRUCTION  
607075P  
DROP CURB SECTION - 12 LF  
606057P  
6" THK. REINF CONCRETE WALK AND APRON - 12 SY  
MMR088M  
SAWCUT - 12 LF  
159138M  
AS DIRECTED - BITUM D,WAY, REPAIR PATCH

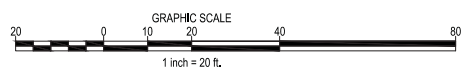
CONSTRUCTION  
607075P  
DROP CURB SECTION - 13 LF  
606057P  
6" THK. REINF CONCRETE WALK AND APRON - 9 SY  
MMR088M  
SAWCUT - 11 LF  
159138M  
AS DIRECTED - BITUM D,WAY, REPAIR PATCH

CONSTRUCTION  
607075P  
DROP CURB SECTION - 17 LF  
606057P  
6" THK. REINF CONCRETE WALK AND APRON - 18 SY  
MMR088M  
SAWCUT - 16 LF  
159138M  
AS DIRECTED - BITUM D,WAY, REPAIR PATCH

602012M - REMOVE EXISTING INLET AND REPLACE WITH TYPE "B" INLET  
1 UNIT  
REMOVE EXIST. TYPE "B" INLET & CASTINGS. INSTALL NEW TYPE "B" PRECAST CONCRETE INLET. SEE DETAIL ON SHEET "14"  
INSTALL NEW TYPE "B" H.D. FRAME, TYPE "N" ECO - PHASE II CURB PIECE & BICYCLE SAFE GRATE  
TG= 467.72  
HEAD=468.22

HILLTOP TERRACE - ROAD IMPROVEMENT PLAN  
STA. 7+00.00 to STA. 14+00.00

SCALE: 1"= 20'

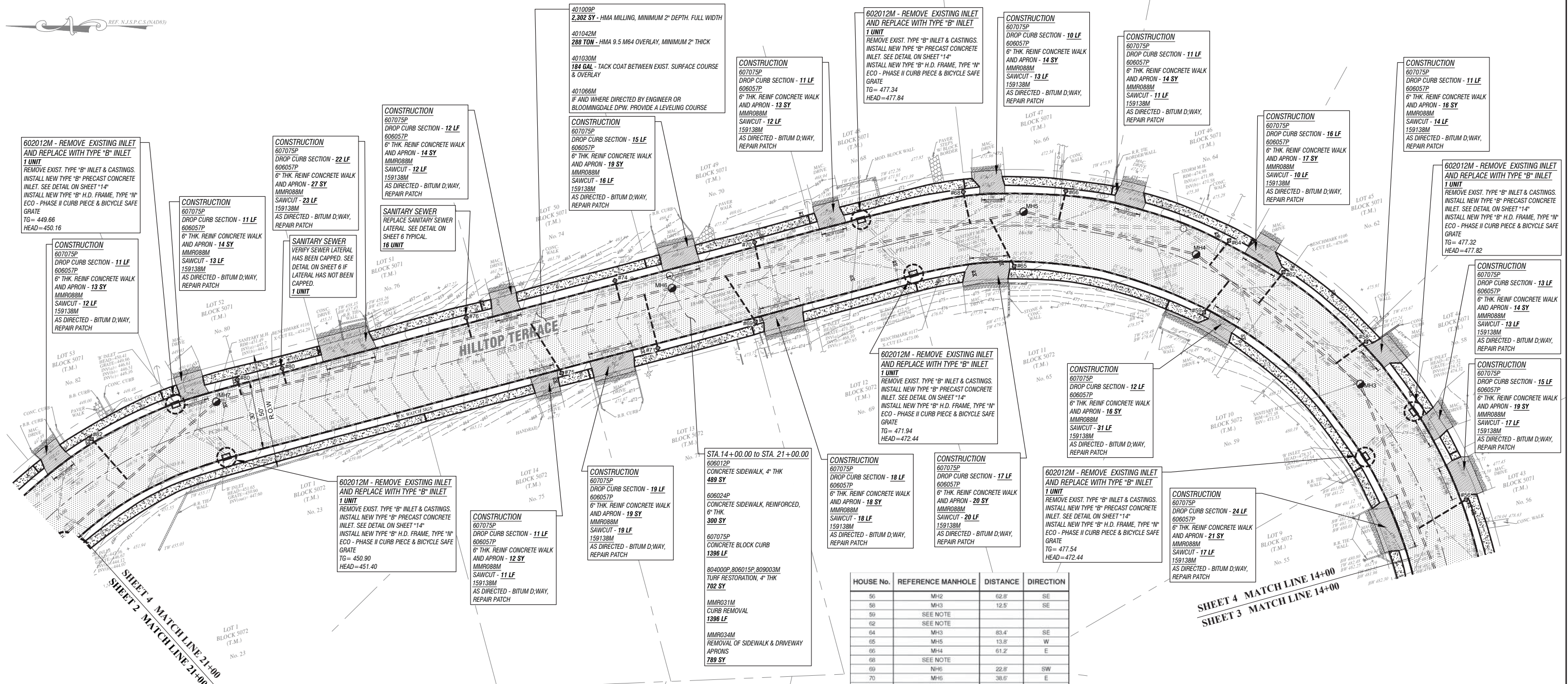


NO.	DATE	BY	REVISIONS

DARMOFALSKI ENGINEERING ASSOCIATES, INC. ©  
This drawing and all information contained herein is proprietary information of DARMOFALSKI ENGINEERING ASSOCIATES, INC. © and may not be copied or reproduced, either in whole or in part, by any methods without the written permission of DARMOFALSKI ENGINEERING ASSOCIATES, INC. © This drawing shall not be considered valid until the engineers signature and raised seal has been affixed to the drawing.

Dwg. Location	Network	CERTIFICATE OF AUTHORIZATION NO. 246A27921100	
Drawn	Checked	Darmofalski Engineering Assoc., Inc.	
Scale	Date	Civil Engineers	
AS NOTED	10/01/2022	Tel. 973.835.8300 Fax 973.835.1117	
Tracer	Sheet Title	86 Newark-Pompton Turnpike - Riverdale, N.J. 07457	
		ROAD IMPROVEMENT PLAN - HILLTOP TERRACE STA 7+00.00 TO STA 14+00.00	
		Proposed Road Improvements at Hilltop Terrace situated in the Borough of Bloomingdale, Passaic County, New Jersey	
		PROJECT NUMBER B21-02	

3  
9



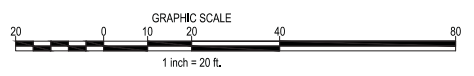
**HILLTOP TERRACE - ROAD IMPROVEMENT PLAN**  
**STA. 14+00.00 to STA. 21+00.00**

SCALE: 1" = 20'

HOUSE No.	REFERENCE MANHOLE	DISTANCE	DIRECTION
55	MH2	62.8'	SE
56	MH3	12.5'	SE
59	SEE NOTE		
62	SEE NOTE		
64	MH3	83.4'	SE
65	MH5	13.8'	W
66	MH4	61.2'	E
68	SEE NOTE		
69	NH6	22.8'	SW
70	MH6	38.6'	E
71	MH6	11.1'	W
74	MH6	22.3'	E
75	MH6	63.1'	W
76	MH6	90.1'	E
80	MH6	195.0'	W
82	MH7	50.9'	NE

NOTE: SANITARY LATERAL COULD NOT BE LOCATED AT THIS ADDRESS WITH TV. LOCATION SHOWN IS FOR COST PURPOSES ONLY. CONTRACTOR IS RESPONSIBLE FOR VERIFYING LOCATION OF ALL EXISTING SANITARY LATERAL SERVICE PRIOR TO REPLACING.

STD. ITEM NO.	TO BE CONSTRUCTED	UNITS	CONTRACT QUANTITY
159138M	HMA PATCH	T	AS DIRECTED
401009P	HMA MILLING, 2" OR LESS	SY	2302
401030M	TACK COAT	GAL	184
401042M	HOT MIX ASPHALT 9.5 M 64 SURFACE COURSE	T	288
401066M	HOT MIX ASPHALT 9.5 M 64 INTERMEDIATE COURSE	T	AS DIRECTED
602012M	INLET, TYPE B	U	6
606012P	CONCRETE SIDEWALK, 4" THICK	SY	489
606057P	CONCRETE DRIVEWAY AND SIDEWALK, REINFORCED, 6" THICK	SY	300
607021P	9"x18" CONCRETE VERTICAL CURB	LF	1396
651255M	RESET WATER VALVE BOX	U	9
652432M	RESET MANHOLE, USING EXISTING CASTING	U	7
653094M	RESET GAS VALVE BOX	U	10
804000P	TOPSOIL SPREADING, 4" THICK	SY	702
806015P	FERTILIZING AND SEEDING, TYPE D	SY	702
809003M	STRAW MULCHING	SY	702
MMR031M	REMOVAL OF CURB	LF	1396
MMR034M	REMOVAL OF SIDEWALK & DRIVEWAY APRONS	SY	789
MMR088M	SAWCUTTING	LF	282
N/A	SANITARY SEWER LATERAL SERVICE CONN REPLACEMENT	U	16
N/A	SANITARY SEWER LATERAL SERVICE CONN ABANDONMENT	U	1



Dwg. Location			Network		
Drawn	MZ	Checked	AP	CERTIFICATE OF AUTHORIZATION NO. 24GA27921100	
Scale	AS NOTED	Date	10/01/2022	<b>Darmofalski Engineering Assoc., Inc.</b> Tels. 973.835.8300    Civil Engineers    Fax 973.835.1117 86 Newark-Pompton Turnpike - Riverdale, N.J. 07457	
Tracer			Sheet Title		
ENGINEERS SEAL & SIGNATURE			Project Title		
NO.    DATE    BY    REVISIONS			ROAD IMPROVEMENT PLAN - HILLTOP TERRACE STA 14+00.00 TO STA 21+00.00		
DARMOFALSKI ENGINEERING ASSOCIATES, INC. © This drawing and all information contained herein is proprietary information of DARMOFALSKI ENGINEERING ASSOCIATES, INC. © and may not be copied or reproduced, either in whole or in part, by any methods without the written permission of DARMOFALSKI ENGINEERING ASSOCIATES, INC. © This drawing shall not be considered valid until the engineers signature and raised seal has been affixed to the drawing.			Proposed Road Improvements at Hilltop Terrace situated in the Borough of Bloomingdale, Passaic County, New Jersey		
THOMAS A BOORADY, P.E. N.J. Professional Engineer License #43110			PROJECT NUMBER B21-02		