

**Tilcon New Jersey  
Pompton Lakes Quarry  
Quarterly Blast Compliance Summary  
4th Quarter 2019**

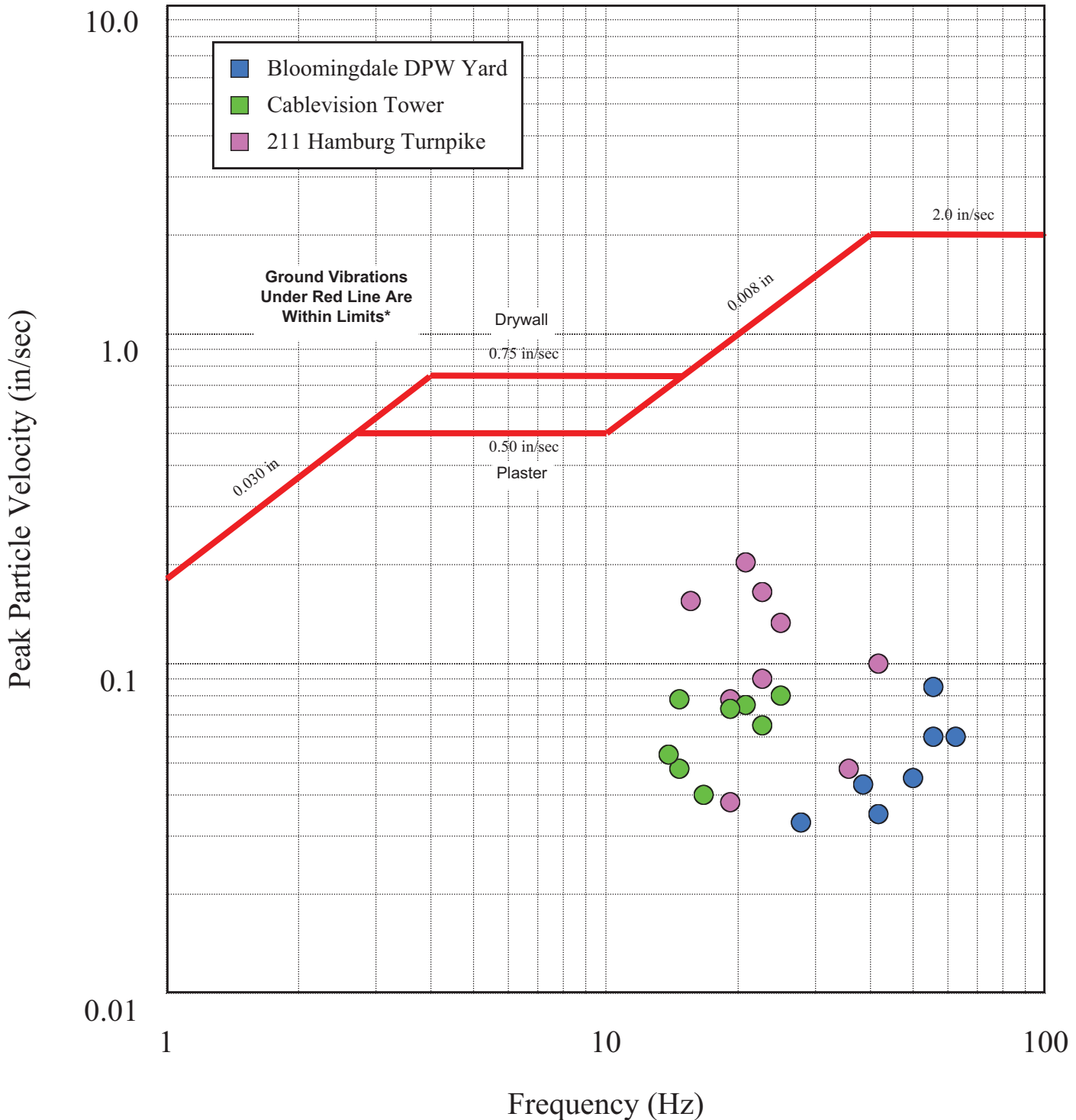
Date	Time	Recording Location	Within NJ Ground Vibration Limits*	Within NJ Air Overpressure Limits**
10/1/2019	13:00	211 Hamburg Turnpike	Yes	Yes
10/1/2019	13:00	Cablevision Tower	Yes	Yes
10/1/2019	13:00	Bloomington DPW Yard	Yes	Yes
10/3/2019	11:45	211 Hamburg Turnpike	Yes	Yes
10/3/2019	11:45	Cablevision Tower	Yes	Yes
10/3/2019	11:45	Bloomington DPW Yard	Yes	Yes
10/9/2019	13:00	211 Hamburg Turnpike	Yes	Yes
10/9/2019	13:00	Cablevision Tower	Yes	Yes
10/9/2019	13:00	Bloomington DPW Yard	Yes	Yes
10/15/2019	12:15	211 Hamburg Turnpike	Yes	Yes
10/15/2019	12:15	Cablevision Tower	Yes	Yes
10/15/2019	12:15	Bloomington DPW Yard	Yes	Yes
10/21/2019	12:30	211 Hamburg Turnpike	Yes	Yes
10/21/2019	12:30	Cablevision Tower	Yes	Yes
10/21/2019	12:30	Bloomington DPW Yard	Yes	Yes
11/4/2019	13:04	211 Hamburg Turnpike	Yes	Yes
11/4/2019	13:04	Cablevision Tower	Yes	Yes
11/4/2019	13:04	Bloomington DPW Yard	Yes	Yes
11/12/2019	12:30	211 Hamburg Turnpike	Yes	Yes
11/12/2019	12:30	Cablevision Tower	Yes	Yes
11/12/2019	12:30	Bloomington DPW Yard	Yes	Yes
11/14/2019	13:30	211 Hamburg Turnpike	Yes	Yes
11/14/2019	13:30	Cablevision Tower	Yes	Yes
11/14/2019	13:30	Bloomington DPW Yard	Yes	Yes
11/21/2019	12:00	211 Hamburg Turnpike	Yes	Yes
11/21/2019	12:00	Cablevision Tower	Yes	Yes
11/21/2019	12:00	Bloomington DPW Yard	Yes	Yes
12/6/2019	13:01	211 Hamburg Turnpike	Yes	Yes
12/6/2019	13:01	Cablevision Tower	Yes	Yes
12/6/2019	13:01	Bloomington DPW Yard	Yes	Yes
12/12/2019	12:00	211 Hamburg Turnpike	Yes	Yes
12/12/2019	12:00	Cablevision Tower	Yes	Yes
12/12/2019	12:00	Bloomington DPW Yard	Yes	Yes
12/13/2019	12:00	211 Hamburg Turnpike	Yes	Yes
12/13/2019	12:00	Cablevision Tower	Yes	Yes
12/13/2019	12:00	Bloomington DPW Yard	Yes	Yes

\*State of New Jersey Administrative Code Title 12:190; Subchapter 7.26

\*\*State of New Jersey Administrative Code Title 12:190; Subchapter 7.25

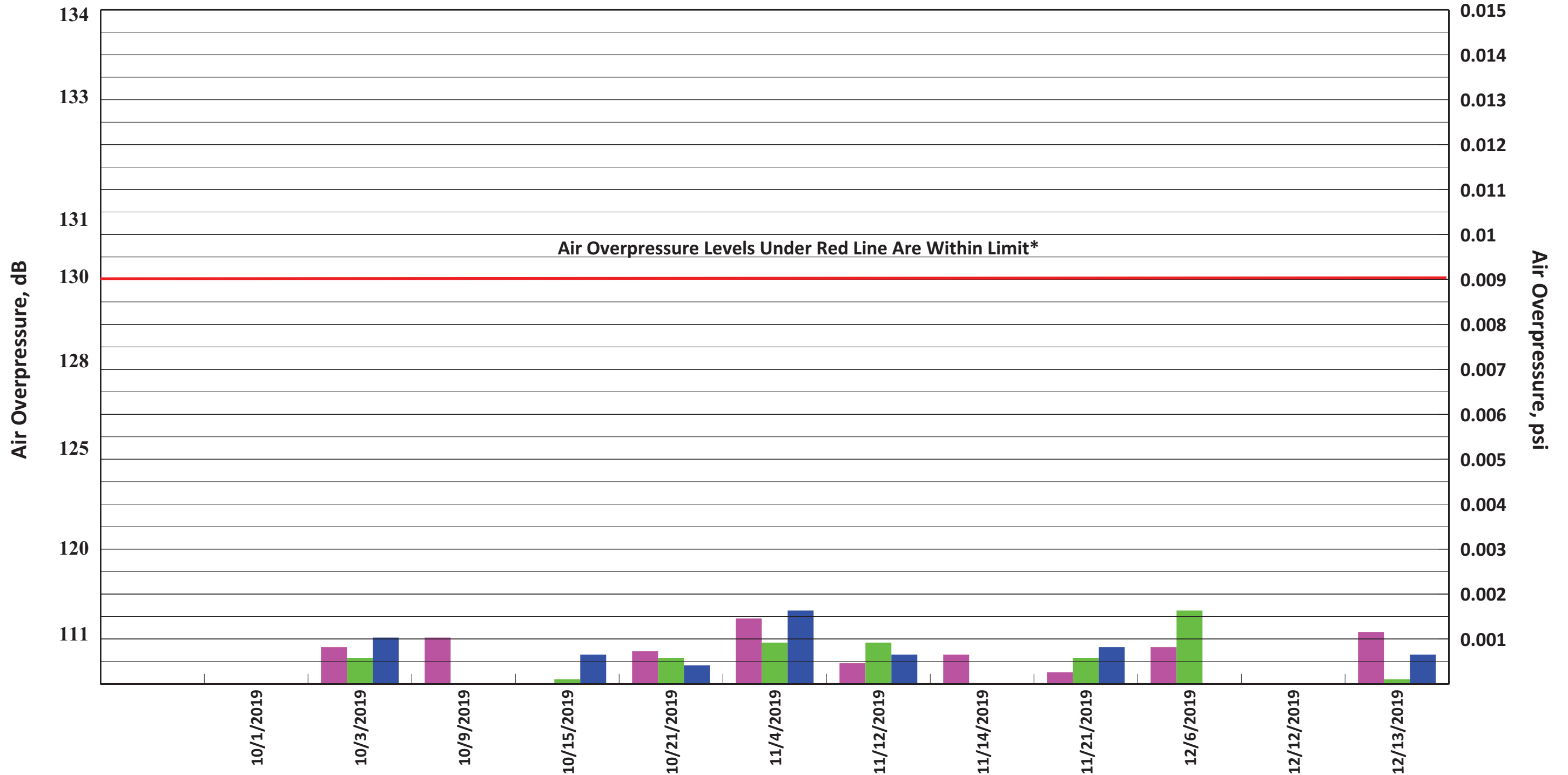
# Comparison of Measured Blast Vibrations to Current U.S. Bureau of Mines Recommendations

## Tilcon New Jersey Pompton Lakes Quarry 4th Quarter 2019



\*As per State of New Jersey Administrative Code Title 12:190; Subchapter 7.26

# Air Overpressure Levels from Tilcon New Jersey - Pompton Lakes Quarry 4th Quarter 2019



\*As per State of New Jersey Administrative Code Title 12.190; Subchapter 7.25

211 Hamburg Turnpike
  Cablevision Tower
  Bloomingdale DPW Yard