



A CRH COMPANY

FAX COVER SHEET

TILCON NEW YORK INC.
9 Entin Road
Parsippany, NJ 07054

TO: Ms. Iris Heredia

FROM: Daniel Naiman – Pompton Lakes Assistant Plant Manager

SUBJECT: Monthly Explosives Use Report

TELEPHONE: (973) 294-9299

DATE: 6/5/2023

TOTAL PAGES: 17 (Including Cover)

MESSAGE: Monthly explosives use report for Pompton Lakes Quarry
Month of April 2023

Monthly Explosives Use Report

NOTE: COMPLETE ALL APPLICABLE ENTRIES ON FRONT AND REVERSE SIDES OF THIS FORM. THE COMPLETED FORM IS TO BE MAILED TO THE OFFICE OF SAFETY COMPLIANCE WITHIN 10 DAYS AFTER THE END OF THE MONTH FOR WHICH THE REPORT IS DUE.

Name <u>Tilcon - Pompton Lakes Facility</u>	Phone No. <u>(973) 835-0028</u>
Street Address <u>Foot of Broad Street</u>	City <u>Pompton Lakes</u>
State <u>NJ</u>	Zip <u>07442</u>

MONTH AND YEAR OF REPORT April 2023	Explosives Lbs.	Detonator (Caps) No.	Gunpowder (Primer)	Other
Beginning Actual Count Inventory First of Month	-	-	-	
Purchases During the Month	110,038	1,013	-	
Total (Item 1 plus Item 2)	110,038	1,013	-	
Blasting Summary	110,038	1,013	-	
Miscellaneous Adjustments	-	-	-	
Month Ending Inventory on Hand by actual Count	-	-	-	

Name of Supplier :	DATE	INV. #	Explosives Lbs.	Detonator (Caps) No.	Gunpowder (Primer)	Other
Maine D&B	4/4/2023	144778	6,325	50	-	
Maurer & Scott	4/6/2023	71599	20,600	239	-	
Maine D&B	4/6/2023	144929	866	49	-	
Maine D&B	4/7/2023	145019	548	40	-	
Maine D&B	4/11/2023	145151	150	30	-	
Maine D&B	4/13/2023	145283	548	35	-	
Maine D&B	4/14/2023	145367	8,246	60	-	
Maine D&B	4/18/2023	145528	2,936	79	-	
Maine D&B	4/20/2023	145636	596	44	-	
Maurer & Scott	4/21/2023	71853	54,996	154	-	

TOTAL NUMBER OF BLASTS - 13

Comments: blasts continued on next page

MAIL TO OFFICE OF PUBLIC SAFETY COMPLIANCE, PO BOX 386, TRENTON, NEW JERSEY 08625-0386
PHONE: (609) 292-2096 FAX: (609) 777-4589

Tilcon - Pompton Lakes Facility
(LICENSEE SIGNATURE)



Monthly Explosives Use Report

NOTE: COMPLETE ALL APPLICABLE ENTRIES ON FRONT AND REVERSE SIDES OF THIS FORM. THE COMPLETED FORM IS TO BE MAILED TO THE OFFICE OF SAFETY COMPLIANCE WITHIN 10 DAYS AFTER THE END OF THE MONTH FOR WHICH THE REPORT IS DUE.

Name	<u>Tilcon - Pompton Lakes Facility</u>	Phone No.	<u>(973) 835-0028</u>
Street Address	<u>Foot of Broad Street</u>	City	<u>Pompton Lakes</u>
State	<u>NJ</u>	Zip	<u>07442</u>

MONTH AND YEAR OF REPORT	Explosives Lbs.	Detonator (Caps) No.	Gunpowder (Primer)	Other
April 2023				
Beginning Actual Count Inventory First of Month	-	-	-	
Purchases During the Month	110,038	1,013	-	
Total (Item 1 plus Item 2)	110,038	1,013	-	
Blasting Summary	110,038	1,013	-	
Miscellaneous Adjustments	-	-	-	
Month Ending Inventory on Hand by actual Count	-	-	-	
Name of Supplier :	DATE	INV. #		
Maine D&B	4/25/2023	145926	7,278	51
Maine D&B	4/26/2023	30054	891	55
Maine D&B	4/28/2023	146181	6,058	285

TOTAL NUMBER OF BLASTS - 13

Comments:

MAIL TO OFFICE OF PUBLIC SAFETY COMPLIANCE, PO BOX 386, TRENTON, NEW JERSEY 08625-0386
 PHONE: (609) 292-2096 FAX: (609) 777-4589

Tilcon - Pompton Lakes Facility
 (LICENSEE SIGNATURE)

EXPLOSIVES USED IN BLASTING

Shots	Date	Time	Site Location	Name of Blaster	Permit #	High Explo. Lbs.	Caps or Det.	Max. lbs. Per Delay	Nearest Structure (Feet)	Seismic PPV and Frequency		Seismic D B Level	Type of Shot (Bank, Trench, Etc.)
										Trans.	Vert. Long		
SHOT 76ER-23	4/4	11:30AM	Tilcon Pompton Lakes	John Currier	006140	6,325	50	331	438	PPV: .486	.565	123.7	Mass
										HZ: 40.2	37.2		
SHOT 3-23	4/6	12:00PM	Tilcon Pompton Lakes	Kyle Boyer	6191	20,600	239	187	2,138	PPV: 0	0	-	Mass
										HZ: 0	0		
SHOT 77ER-23	4/6	11:45AM	Tilcon Pompton Lakes	John Currier	006140	866	49	50	450	PPV: .112	.171	110.3	Pre-split
										HZ: 23.5	20.1		
SHOT 78ER-23	4/7	11:00AM	Tilcon Pompton Lakes	John Currier	006140	548	40	70	464	PPV: .08	.155	107.2	Pre-split
										HZ: 20.9	28.8		
SHOT 79ER-23	4/11	11:30AM	Tilcon Pompton Lakes	John Currier	006140	150	30	65	469	PPV: .052	.077	108.4	Pre-split
										HZ: 52.5	25.9		
SHOT 80ER-23	4/13	11:00AM	Tilcon Pompton Lakes	John Currier	006140	548	35	77	475	PPV: .066	.1	116.1	Pre-split
										HZ: 31.5	28.1		
SHOT 81ER-23	4/14	11:00AM	Tilcon Pompton Lakes	John Currier	006140	8,246	60	338	461	PPV: .704	.752	123.5	Mass
										HZ: 36.6	31.5		
SHOT 82ER-23	4/18	12:00PM	Tilcon Pompton Lakes	John Currier	006140	2,936	79	144	686	PPV: .04	.053	125.0	Mass
										HZ: 38.5	41.7		
SHOT 83ER-23	4/20	11:45AM	Tilcon Pompton Lakes	John Currier	006140	596	44	55	501	PPV: .083	.113	110.0	Pre-split
										HZ: 47.6	22.5		
SHOT 4-23	4/21	11:00AM	Tilcon Pompton Lakes	Kyle Boyer	6191	54,996	154	733	2,095	PPV: .14	.142	109.0	Mass
										HZ: 15.6	35.7		
SHOT 84ER-23	4/25	11:00AM	Tilcon Pompton Lakes	John Currier	006140	7,278	51	338	434	PPV: .387	.451	125.4	Mass
										HZ: 36.6	28.1		
SHOT 85ER-23	4/26	12:00PM	Tilcon Pompton Lakes	John Currier	006140	891	55	65	465	PPV: .091	.114	107.9	Pre-split
										HZ: 39.4	35.9		
SHOT 86ER-23	4/28	12:00PM	Tilcon Pompton Lakes	John Currier	006140	6,058	127	285	419	PPV: .282	.281	124.0	Mass
										HZ: 42.7	58.5		
SHOT										PPV:			
										HZ:			
SHOT										PPV:			
										HZ:			
TOTALS						110,038	1,013						

Quarry Construction Site
 120 Broad St
 Pompton Lakes, New Jersey
 Seismo At:
 McPherson Hall

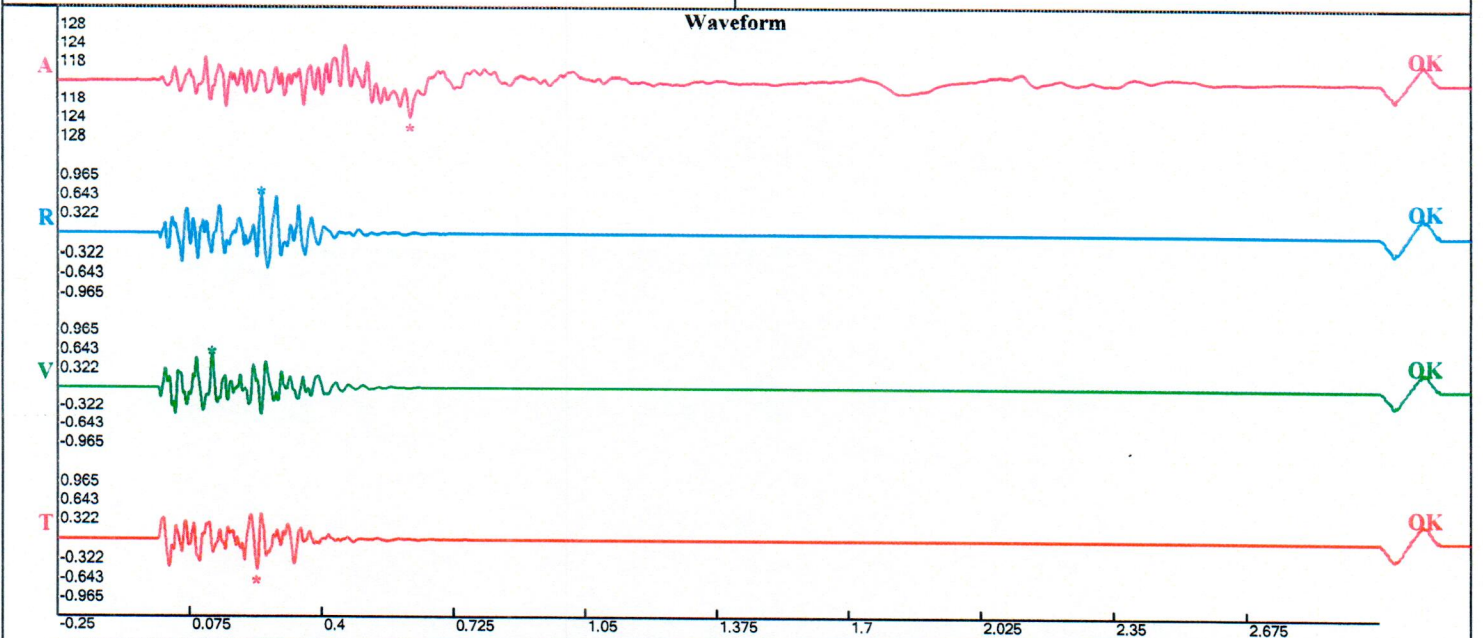
Record: 10072202304041130090211.proevt
 Number: 211
 Seismograph: Mini-Seis III Pro 10072
 Type of Record: Waveform
 Date: 4/4/2023 11:30:09 AM
 Duration: 3.25 Seconds
 Sample Rate: 4096
 Pre-Trigger: 0.25 Seconds
 Seismic Trigger: 0.065 in/s
 Acoustic Trigger: 120.2 dB
 Seismic Gain: 10.24
 Acoustic Gain: 148.2 dB
 Voltage: 6.53

Peaks and Frequencies

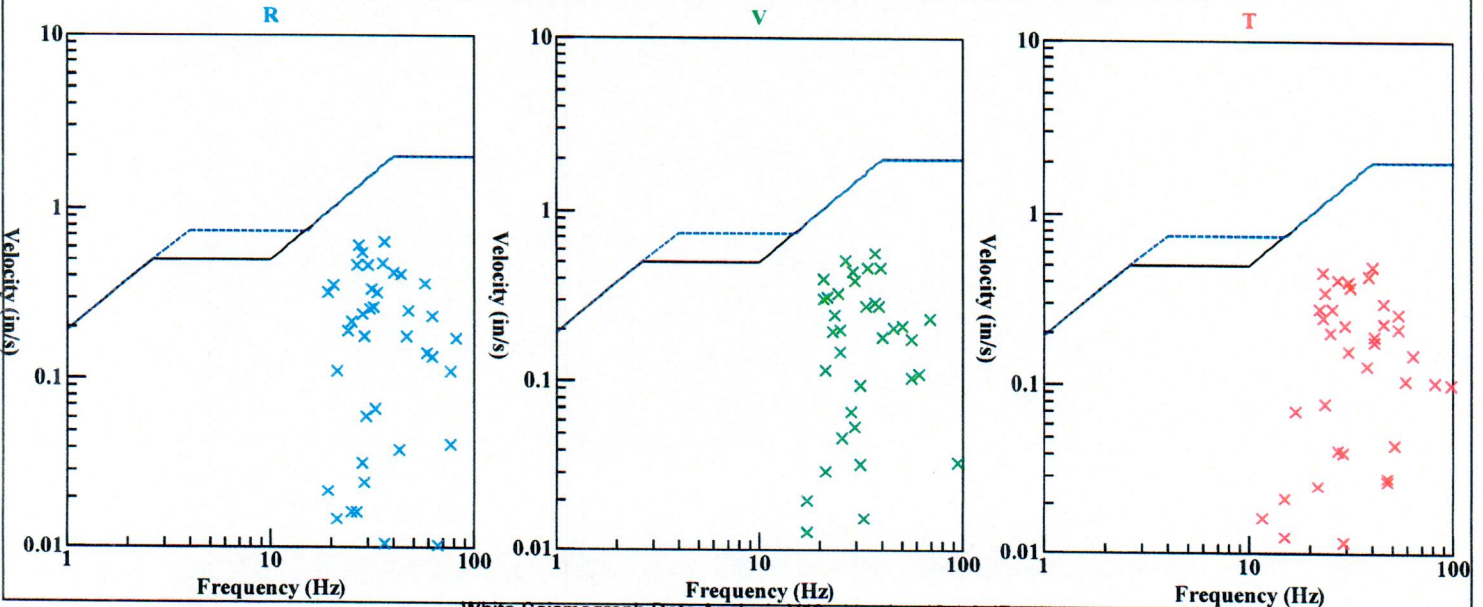
PPV Maximum (Geo #1): 0.643 in/s
 Acoustic #1: 123.7 dB @ 3.5 Hz (0.6169434 s)
 Radial #1: 0.643 in/s @ 35.3 Hz (0.2514648 s)
 Vertical #1: 0.565 in/s @ 37.2 Hz (0.1296387 s)
 Transverse #1: 0.486 in/s @ 40.2 Hz (0.2404785 s)
 Displacement (Geo #1): 0.00358 in
 Acceleration (Geo #1): 0.464 g's
 Last Calibration Date: 5/19/2022

Graph Information

Time Range: -0.25 s to 3 s, Intervals: 0.3250 Seconds



Velocity vs. Frequency (Particle Velocity Versus Frequency - USBM Limits (RI 8507, 1980))



Summary Data Report

Serial No: 5720 v3.85
Client: Tilcon
Operation: Pompton Lakes
Location: 120 Federal Hill
Distance: 2137
Operator: K Boyer
Comment: Maurer & Scott

Begin Date: 04/06/2023 11:35:01
End Date: 04/06/2023 12:04:11
Events over Trigger: 0 (10-9)
Record Time: 5.0 s
Seismic Trigger: 0.050 in/s
Sound Trigger: 120 db
Battery Level: 12.9

Additional Info:

Shaketable Calibrated: 02/21/2023
By: GeoSonics Inc.
359 Northgate Drive
Warrendale, PA 15086 U.S.A.
TEL: 724.934.2900 FAX: 724.934.2999

Quarry Construction Site
 Broad St
 Pompton Lakes, New Jersey
 Seismo At:
 McPherson Hall

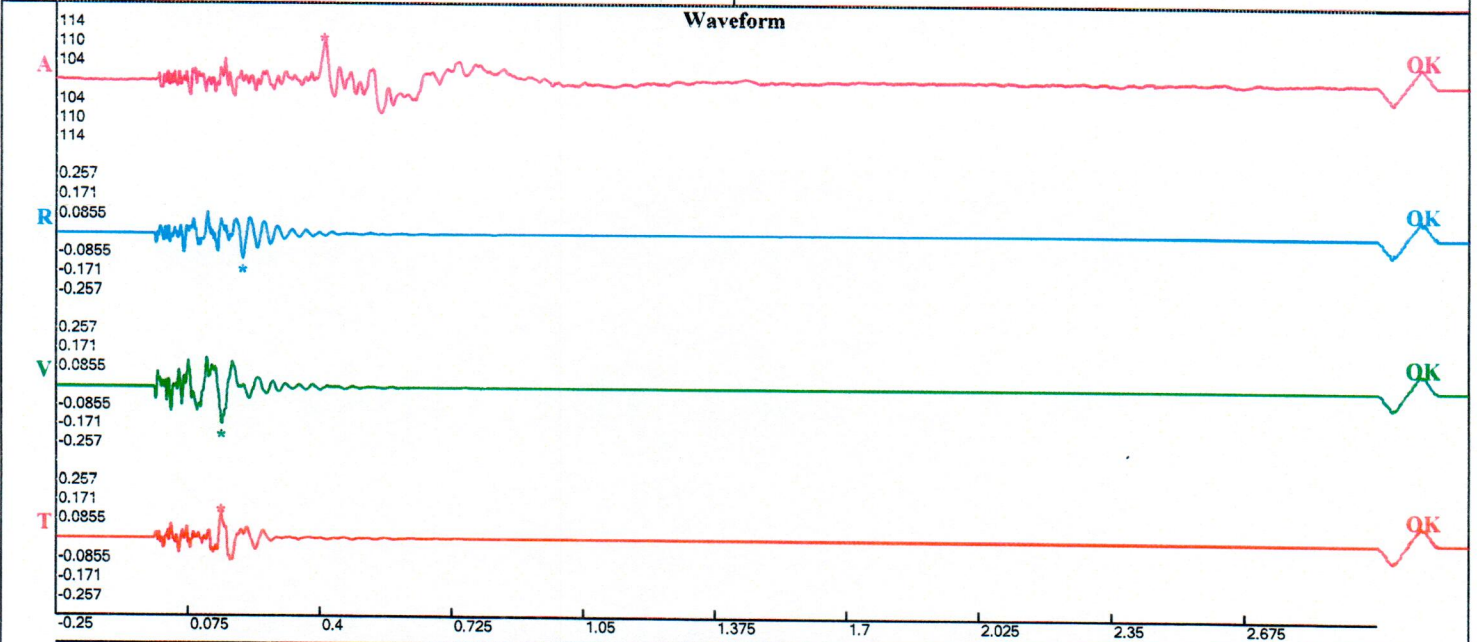
Record: 10072202304061145040212.proevt
 Number: 212
 Seismograph: Mini-Seis III Pro 10072
 Type of Record: Waveform
 Date: 4/6/2023 11:45:04 AM
 Duration: 3.25 Seconds
 Sample Rate: 4096
 Pre-Trigger: 0.25 Seconds
 Seismic Trigger: 0.065 in/s
 Acoustic Trigger: 120.2 dB
 Seismic Gain: 10.24
 Acoustic Gain: 148.2 dB
 Voltage: 6.49

Peaks and Frequencies

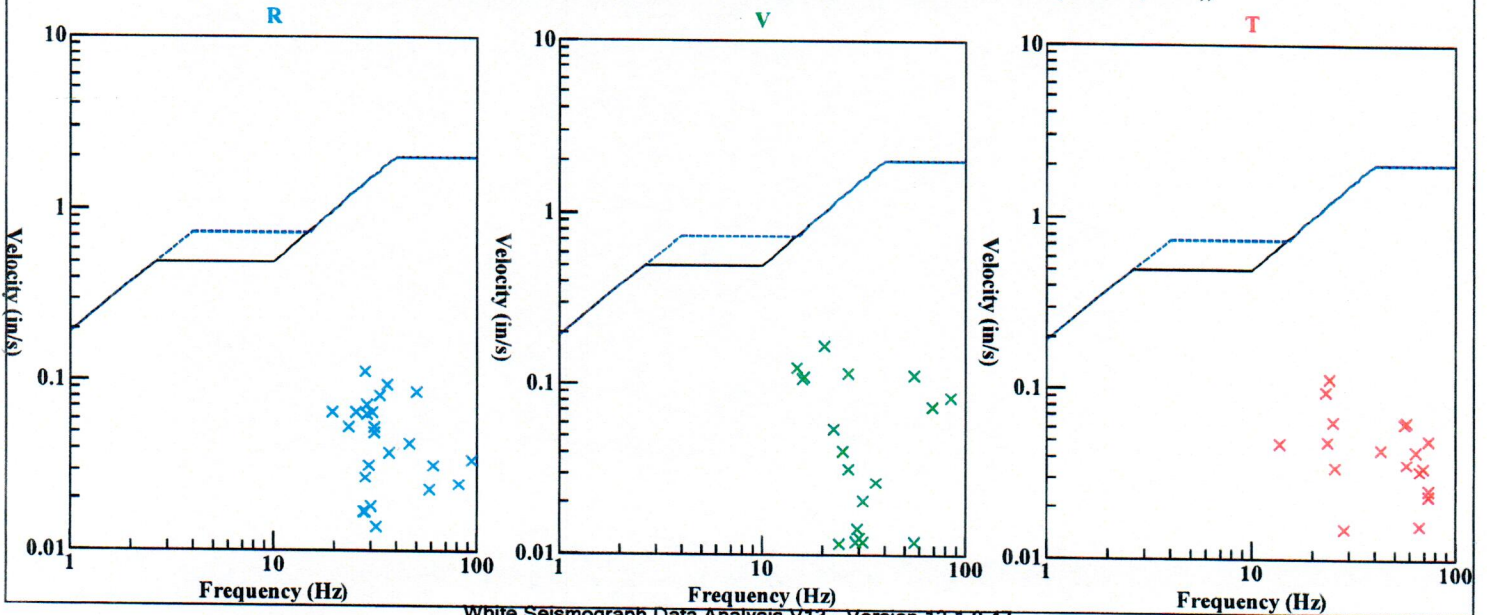
PPV Maximum (Geo #1): 0.171 in/s
 Acoustic #1: 110.3 dB @ 9.4 Hz (0.4106445 s)
 Radial #1: 0.112 in/s @ 28.1 Hz (0.2092285 s)
 Vertical #1: 0.171 in/s @ 20.1 Hz (0.1572266 s)
 Transverse #1: 0.112 in/s @ 23.5 Hz (0.1550293 s)
 Displacement (Geo #1): 0.00123 in
 Acceleration (Geo #1): 0.124 g's
 Last Calibration Date: 5/19/2022

Graph Information

Time Range: -0.25 s to 3 s, Intervals: 0.3250 Seconds



Velocity vs. Frequency (Particle Velocity Versus Frequency - USBM Limits (RI 8507, 1980))



Quarry Construction Site
 Broad St
 Pompton Lakes, New Jersey
 Seismo At:
 McPherson Hall

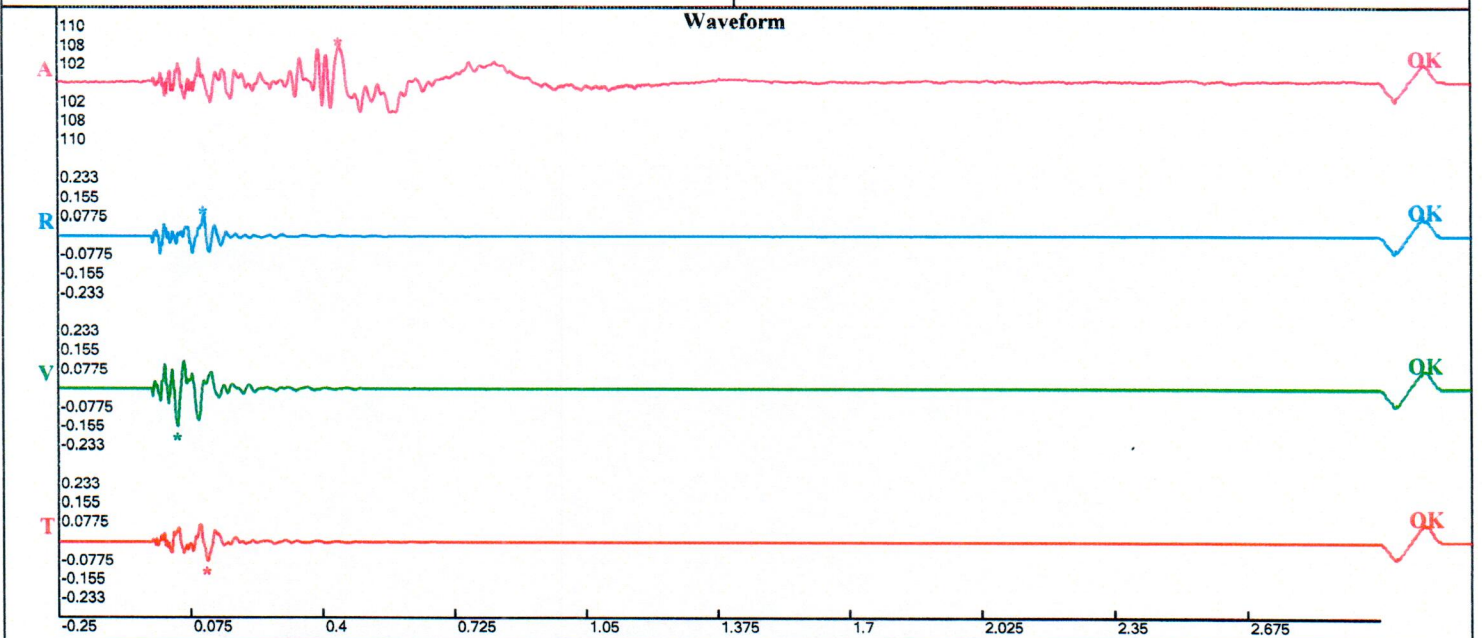
Record: 10072202304071100100213.proevt
 Number: 213
 Seismograph: Mini-Seis III Pro 10072
 Type of Record: Waveform
 Date: 4/7/2023 11:00:10 AM
 Duration: 3.25 Seconds
 Sample Rate: 4096
 Pre-Trigger: 0.25 Seconds
 Seismic Trigger: 0.065 in/s
 Acoustic Trigger: 120.2 dB
 Seismic Gain: 10.24
 Acoustic Gain: 148.2 dB
 Voltage: 6.47

Peaks and Frequencies

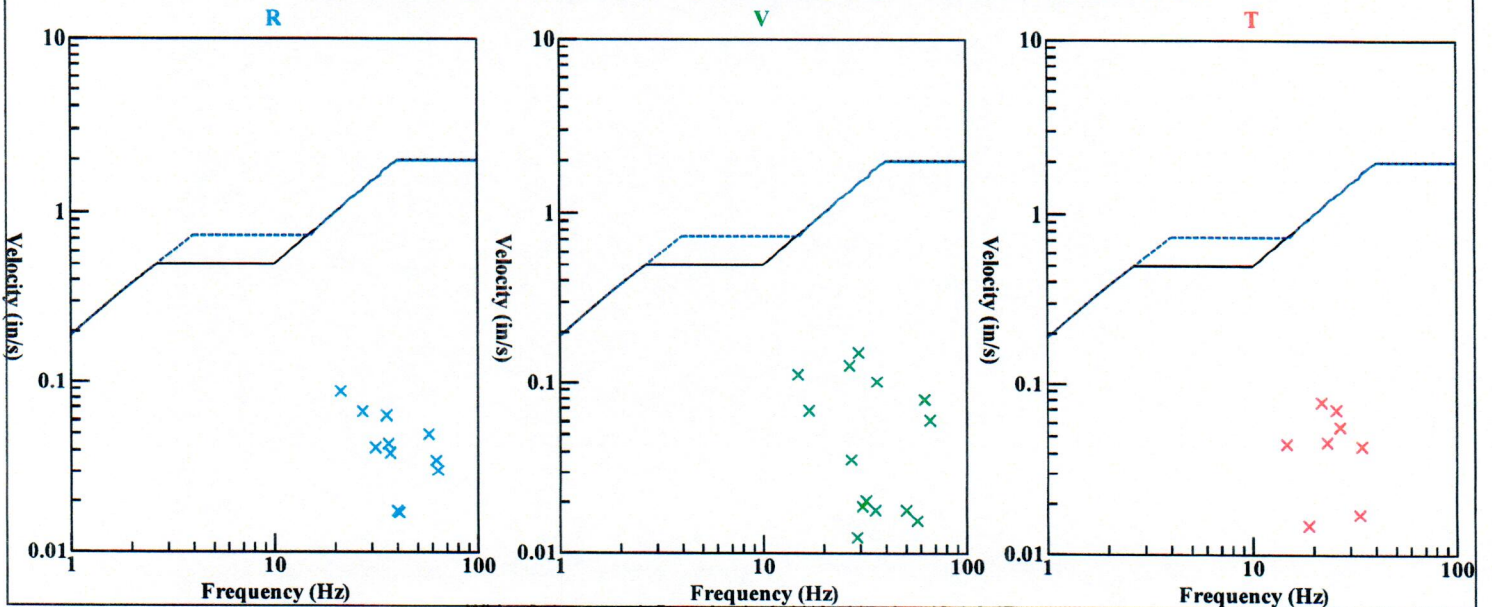
PPV Maximum (Geo #1): 0.155 in/s
 Acoustic #1: 107.2 dB @ 16.0 Hz (0.4411621 s)
 Radial #1: 0.0888 in/s @ 21.1 Hz (0.107666 s)
 Vertical #1: 0.155 in/s @ 28.8 Hz (0.04321289 s)
 Transverse #1: 0.08 in/s @ 20.9 Hz (0.1140137 s)
 Displacement (Geo #1): 0.000932 in
 Acceleration (Geo #1): 0.106 g's
 Last Calibration Date: 5/19/2022

Graph Information

Time Range: -0.25 s to 3 s, Intervals: 0.3250 Seconds



Velocity vs. Frequency (Particle Velocity Versus Frequency - USBM Limits (RI 8507, 1980))



Quarry Construction Site
 Broad St
 Mottl Lakes, New Jersey
 Seismo At:
 McPherson Hall

Record: 1007220230411130150214.proevt
 Number: 214
 Seismograph: Mini-Seis III Pro 10072
 Type of Record: Waveform
 Date: 4/11/2023 11:30:15 AM
 Duration: 3.25 Seconds
 Sample Rate: 4096
 Pre-Trigger: 0.25 Seconds
 Seismic Trigger: 0.065 in/s
 Acoustic Trigger: 120.2 dB
 Seismic Gain: 10.24
 Acoustic Gain: 148.2 dB
 Voltage: 6.32

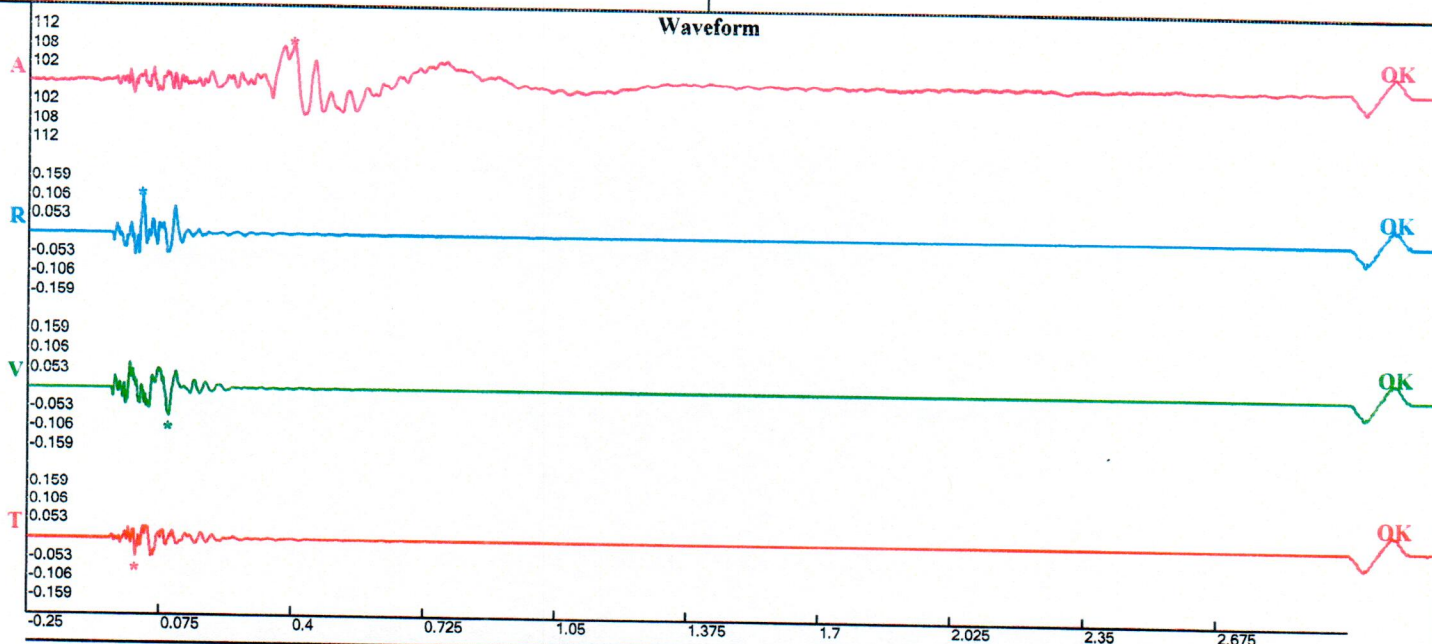
Peaks and Frequencies

PPV Maximum (Geo #1): 0.106 in/s
 Acoustic #1: 108.4 dB @ 8.4 Hz (0.4008789 s)
 Radial #1: 0.106 in/s @ 35.9 Hz (0.02929688 s)
 Vertical #1: 0.0772 in/s @ 25.9 Hz (0.09570313 s)
 Transverse #1: 0.0516 in/s @ 52.5 Hz (0.015625 s)
 Displacement (Geo #1): 0.000722 in
 Acceleration (Geo #1): 0.0911 g's
 Last Calibration Date: 5/19/2022

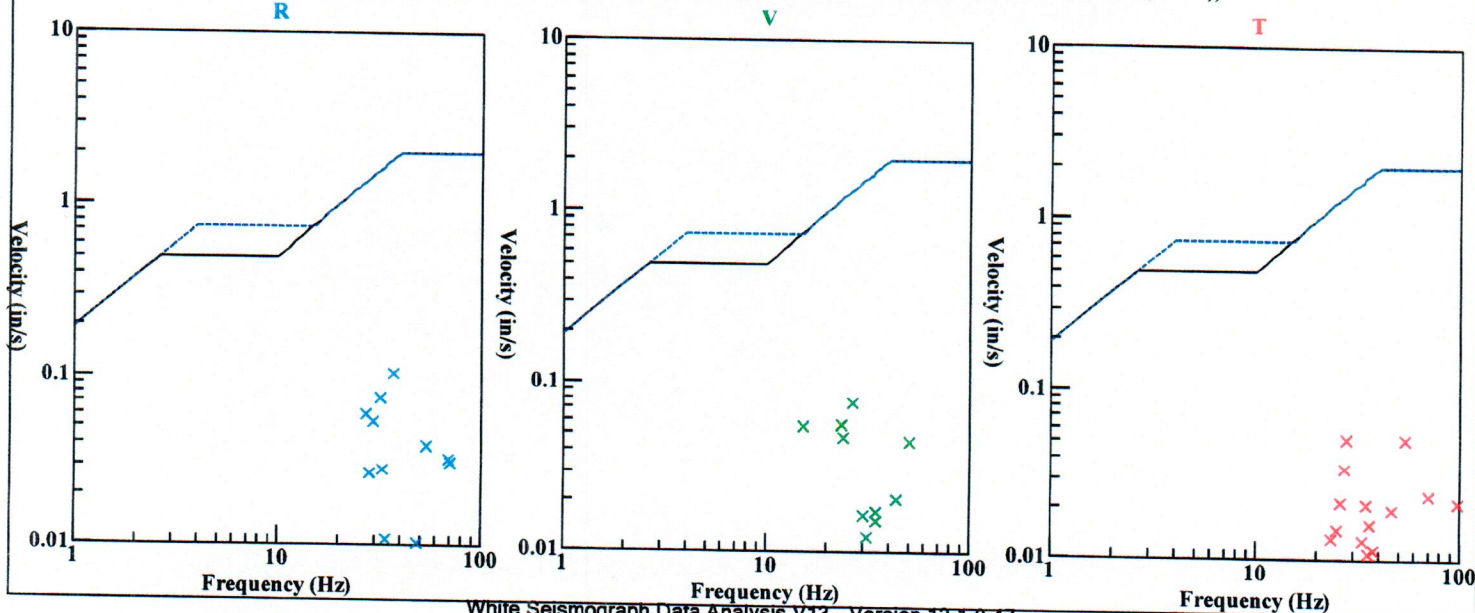
Graph Information

Time Range: -0.25 s to 3 s, Intervals: 0.3250 Seconds

Waveform



Velocity vs. Frequency (Particle Velocity Versus Frequency - USBM Limits (RI 8507, 1980))

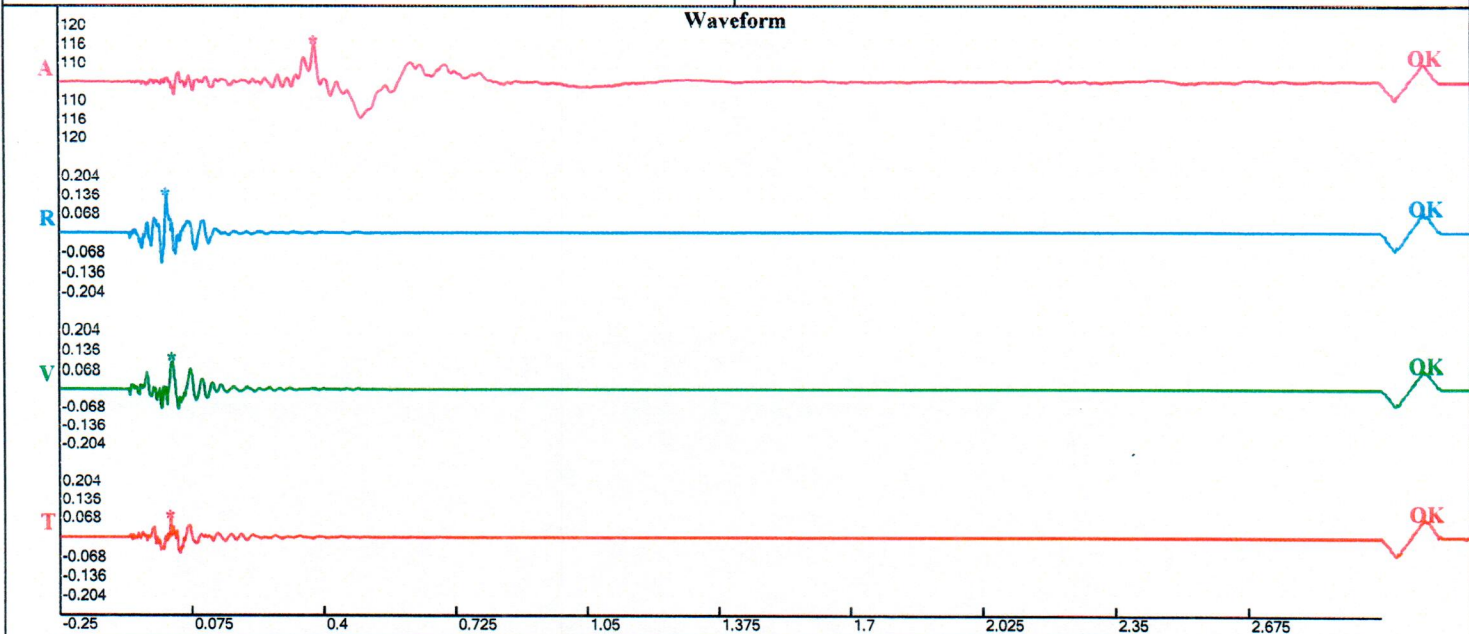


Quarry Construction Site
 Broad St
 Mottl Lakes, New Jersey
 Seismo At:
 McPherson Hall

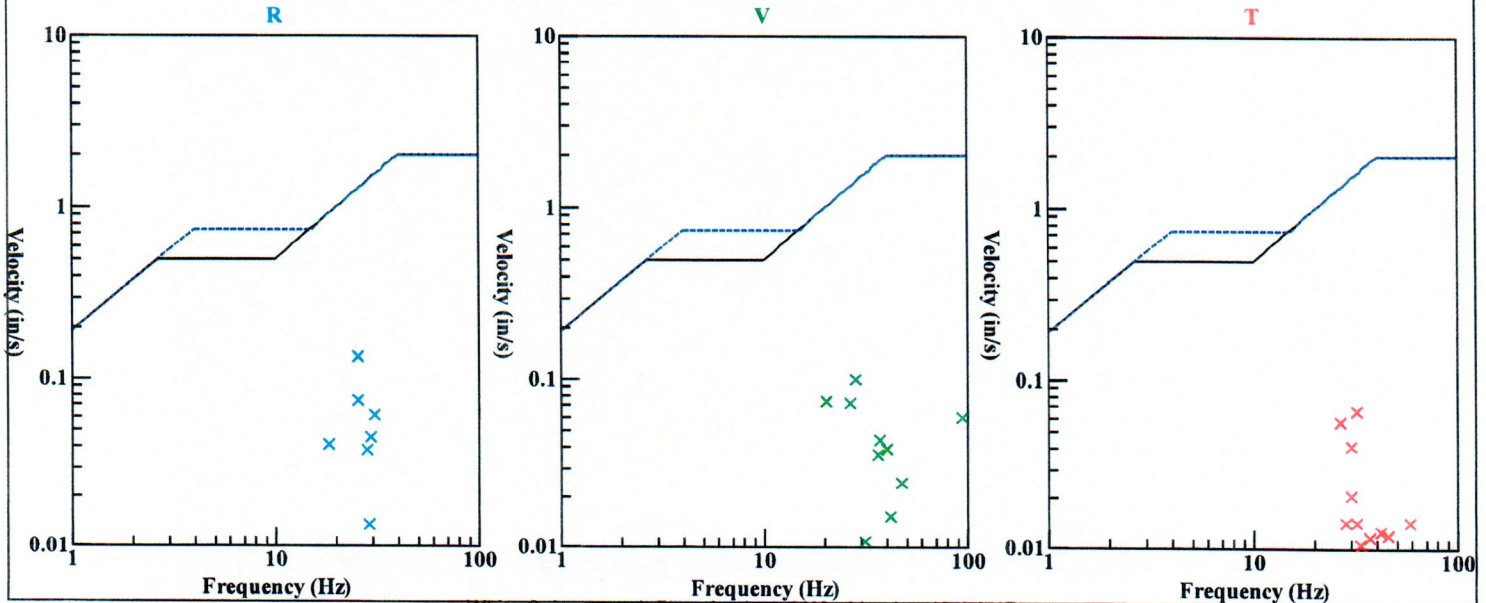
Record: 10072202304131100090215.proevt
 Number: 215
 Seismograph: Mini-Seis III Pro 10072
 Type of Record: Waveform
 Date: 4/13/2023 11:00:09 AM
 Duration: 3.25 Seconds
 Sample Rate: 4096
 Pre-Trigger: 0.25 Seconds
 Seismic Trigger: 0.065 in/s
 Acoustic Trigger: 120.2 dB
 Seismic Gain: 10.24
 Acoustic Gain: 148.2 dB
 Voltage: 6.49

Peaks and Frequencies
 PPV Maximum (Geo #1): 0.136 in/s
 Acoustic #1: 116.1 dB @ 7.9 Hz (0.3798828 s)
 Radial #1: 0.136 in/s @ 25.0 Hz (0.01318359 s)
 Vertical #1: 0.1 in/s @ 28.1 Hz (0.02783203 s)
 Transverse #1: 0.0656 in/s @ 31.5 Hz (0.0222168 s)
 Displacement (Geo #1): 0.000689 in
 Acceleration (Geo #1): 0.108 g's
 Last Calibration Date: 5/19/2022

Graph Information
 Time Range: -0.25 s to 3 s, Intervals: 0.3250 Seconds



Velocity vs. Frequency (Particle Velocity Versus Frequency - USBM Limits (RI 8507, 1980))



Quarry Construction Site
 Broad St
 Hampton Lakes, New Jersey
 Seismo At:
 McPherson Hall

Record: 10072202304141100050216.proevt
 Number: 216
 Seismograph: Mini-Seis III Pro 10072
 Type of Record: Waveform
 Date: 4/14/2023 11:00:05 AM
 Duration: 3.25 Seconds
 Sample Rate: 4096
 Pre-Trigger: 0.25 Seconds
 Seismic Trigger: 0.065 in/s
 Acoustic Trigger: 120.2 dB
 Seismic Gain: 10.24
 Acoustic Gain: 148.2 dB
 Voltage: 6.48

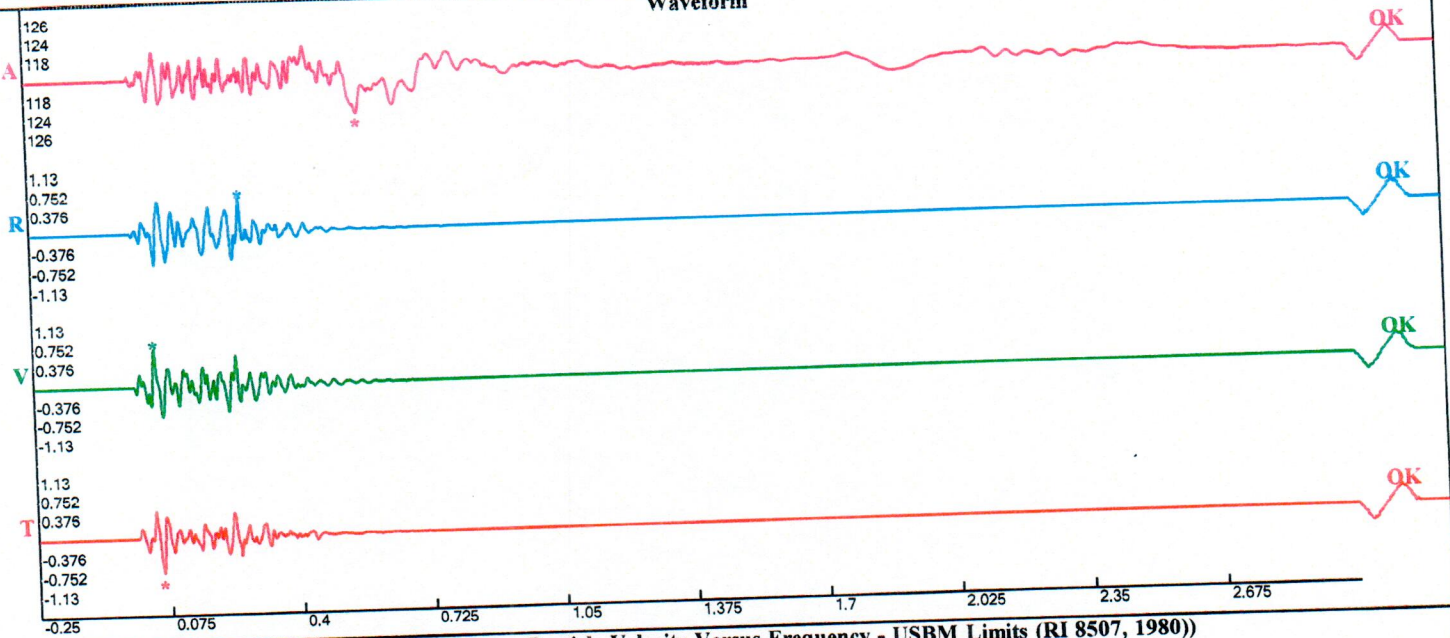
Peaks and Frequencies

PPV Maximum (Geo #1): 0.752 in/s
 Acoustic #1: 123.5 dB @ 2.7 Hz (0.5666504 s)
 Radial #1: 0.673 in/s @ 42.7 Hz (0.2680664 s)
 Vertical #1: 0.752 in/s @ 31.5 Hz (0.04736328 s)
 Transverse #1: 0.704 in/s @ 36.6 Hz (0.05615234 s)
 Displacement (Geo #1): 0.00334 in
 Acceleration (Geo #1): 0.641 g's
 Last Calibration Date: 5/19/2022

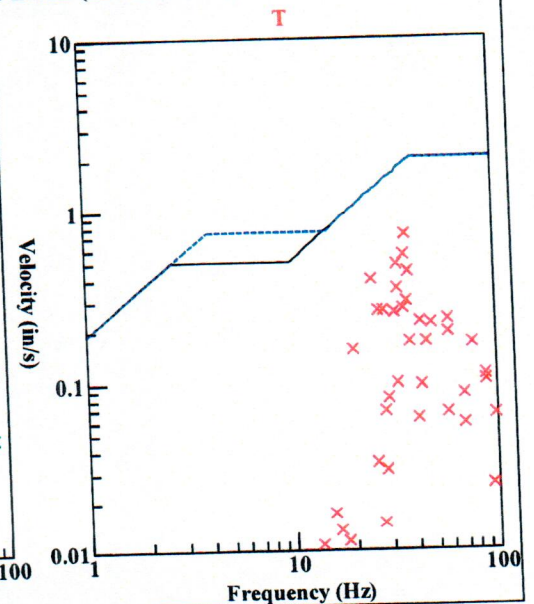
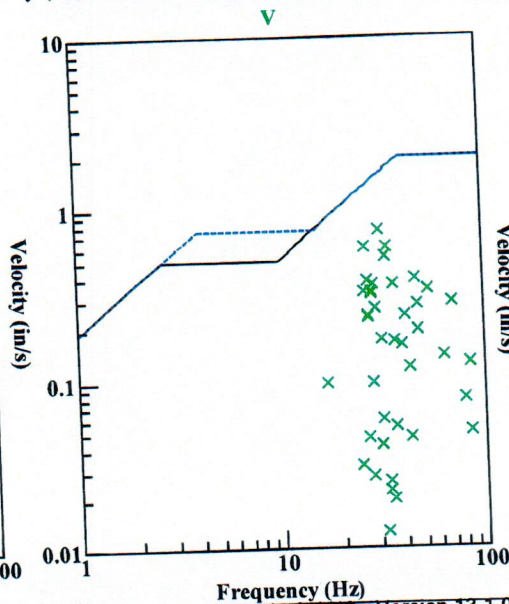
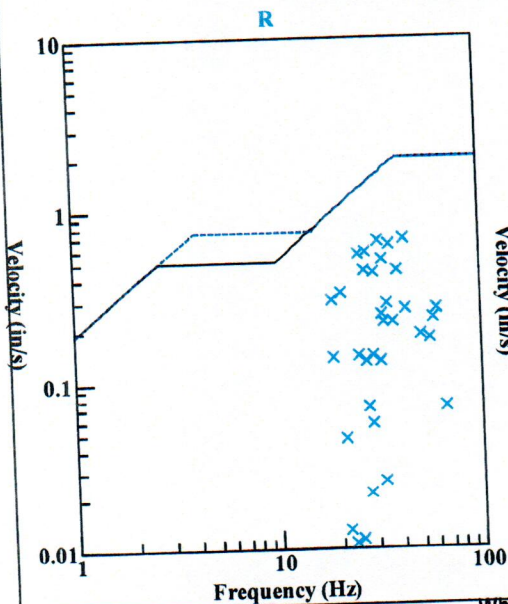
Graph Information

Time Range: -0.25 s to 3 s, Intervals: 0.3250 Seconds

Waveform



Velocity vs. Frequency (Particle Velocity Versus Frequency - USBM Limits (RI 8507, 1980))



Seismic Analysis Velocity Waveform Analysis

Serial Number: 11362
Firmware Version: 0C-10.29
Event Date: 04/18/2023 12:00:05 (UTC -04:00)
Event number: 91
Recording Time: 5 s
Client: Tilcon New Jersey
Operation: Pompton Lakes Quarry
Location: Jernick Hall
Distance:
Operator: Vibra-Tech Engineers
Comment: Elks Moore Jernick Hall
Seismic Trigger: 0.03 in/s
Sound Trigger: 125 dB

Additional Info:
 j-GEO-43208
 N41 0.783, W074 18.115

Summary Data

	L	T	V
PPV (in/s):	0.05	0.04	0.0525
FREQ (HZ):	45.5	38.5	41.7
PD (.001"):	0.1875	0.1975	0.1725
PPA (g):	0.04557	0.03906	0.04557

Peak Vector Sum: 0.0575 in/s
Peak Air Pressure: 109.3 dB
 0.0008 psi @ 16.1 HZ

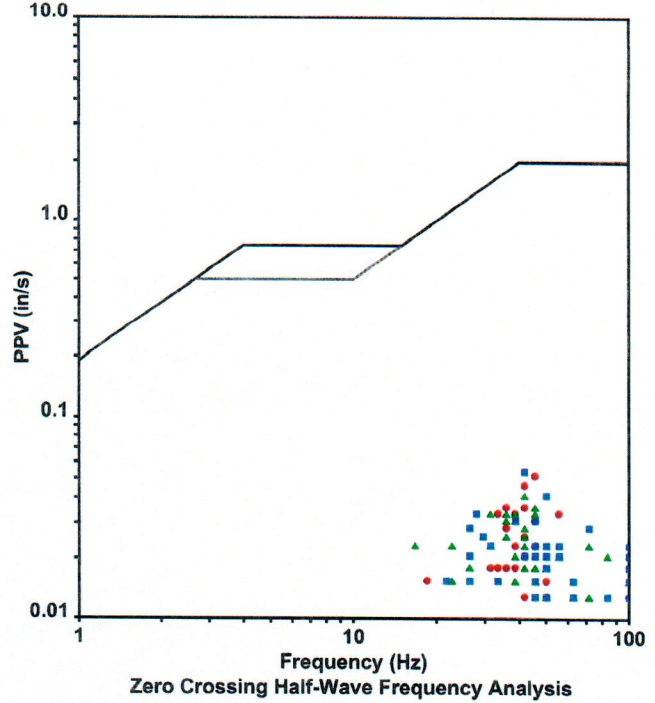
Shaketable Calibrated

On: 06/01/2022 (UTC -04:00)
By: Vibra-Tech, Inc.
 2700 Holloway Road - Suite 113
 Louisville, KY 40203 U.S.A.

USBM Safe Blasting Levels

SSN: 11362 Event: 91

● Longitudinal ▲ Transverse ■ Vertical

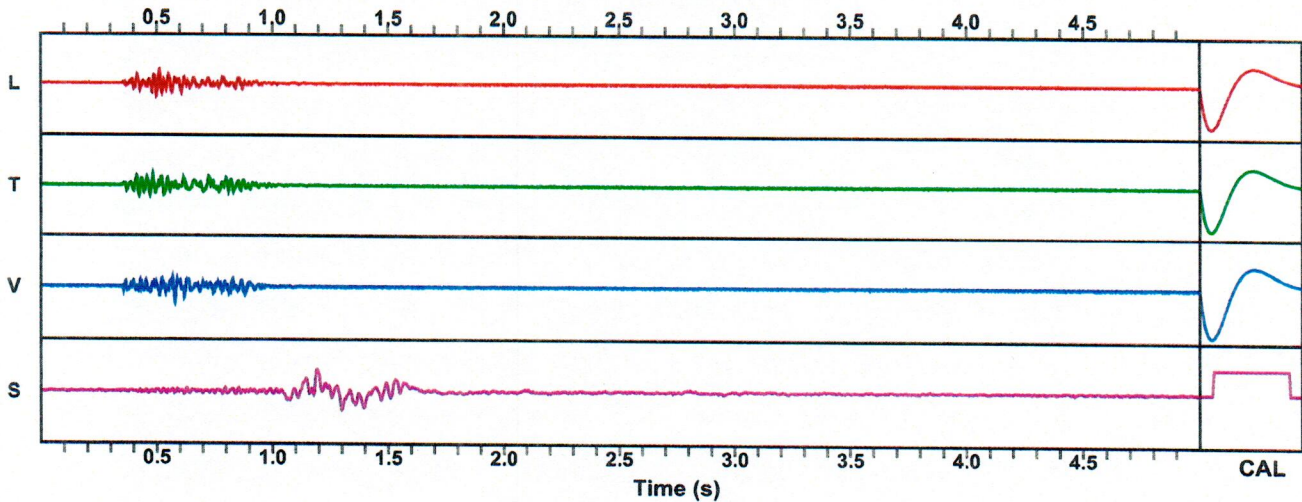


Waveform Graph Scale

Time Scale: 0.1 s
Seismic Scale: +/- 0.16 in/s
Sound Scale: +/- 0.0023 psi

Velocity Waveform

SSN: 11362 Event: 91



Quarry Construction Site
 Broad St
 Mottlons Lakes, New Jersey
 Seismo At:
 McPherson Hall

Record: bo2geo01.evt
 Number: 0001
 Seismograph: Mini-Seis III 7964
 Type of Record: Waveform
 Date: 4/20/2023 11:45:05 AM
 Duration: 4.25 Seconds
 Sample Rate: 4096
 Pre-Trigger: 0.25 Seconds
 Seismic Trigger: 0.04 in/s
 Acoustic Trigger: 116.1 dB
 Seismic Gain: 10.24
 Acoustic Gain: 148.2 dB
 Voltage: 6.38

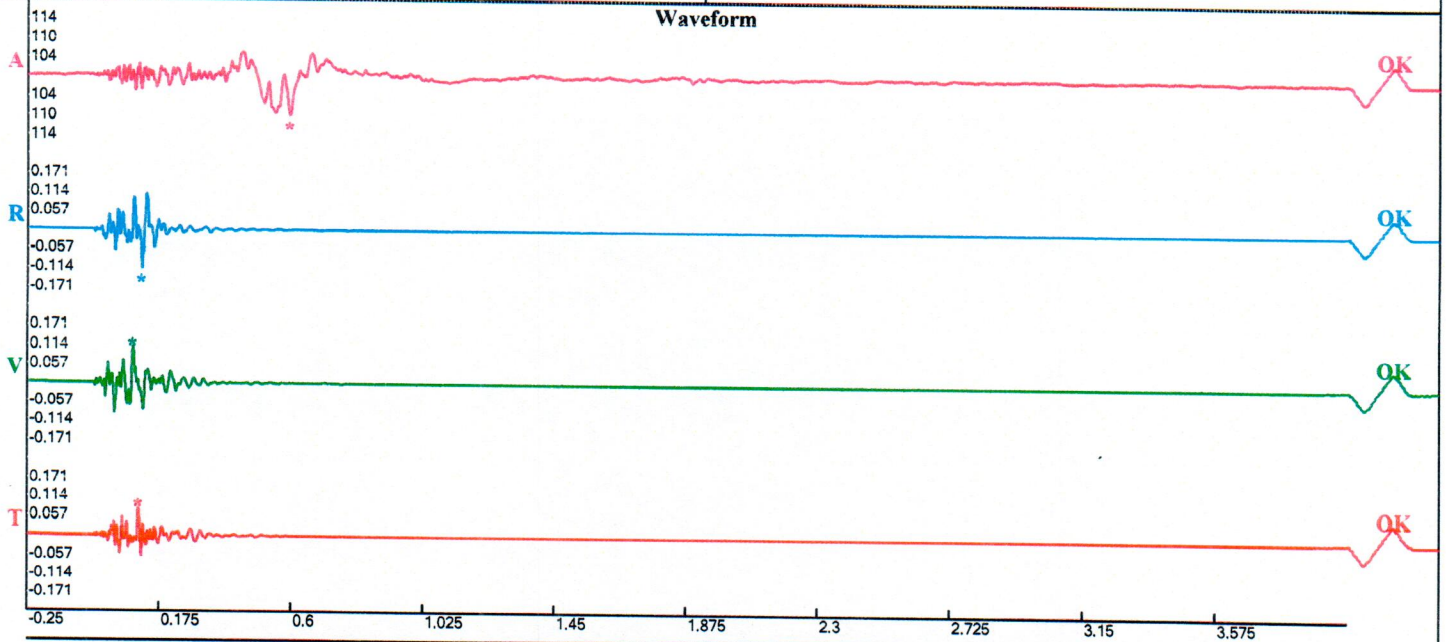
Peaks and Frequencies

PPV Maximum (Geo #1): 0.114 in/s
 Acoustic #1: 110.0 dB @ 11.6 Hz (0.5942383 s)
 Radial #1: 0.114 in/s @ 32.5 Hz (0.1181641 s)
 Vertical #1: 0.113 in/s @ 22.5 Hz (0.09008789 s)
 Transverse #1: 0.0834 in/s @ 47.6 Hz (0.1071777 s)
 Displacement (Geo #1): 0.00061 in
 Acceleration (Geo #1): 0.139 g's
 Last Calibration Date: 4/7/2023

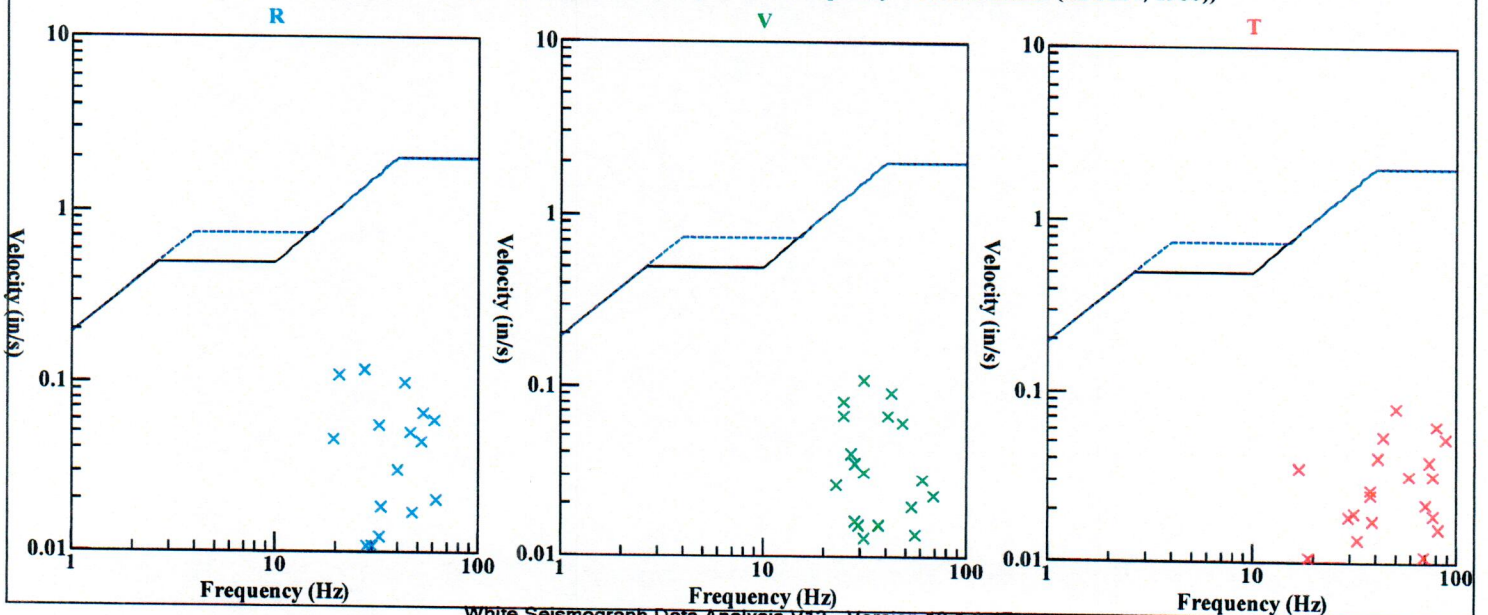
Graph Information

Time Range: -0.25 s to 4 s, Intervals: 0.4250 Seconds

Waveform



Velocity vs. Frequency (Particle Velocity Versus Frequency - USBM Limits (RI 8507, 1980))



Seismic Analysis Velocity Waveform Analysis

Serial Number: 11248
Firmware Version: 0C-10.29
Event Date: 04/21/2023 11:00:05 (UTC -04:00)
Event number: 15
Recording Time: 10 s
Client: Tilcon NJ
Operation: Pompton Lakes Quarry
Location: 211 Hamburg Turnpike
Distance:
Operator: Vibra-Tech Engineers
Comment: 150
Seismic Trigger: 0.03 in/s
Sound Trigger: 123.5 dB

Additional Info: -of building
 j-GEO-19770
 N41 00.064, W074 18.899

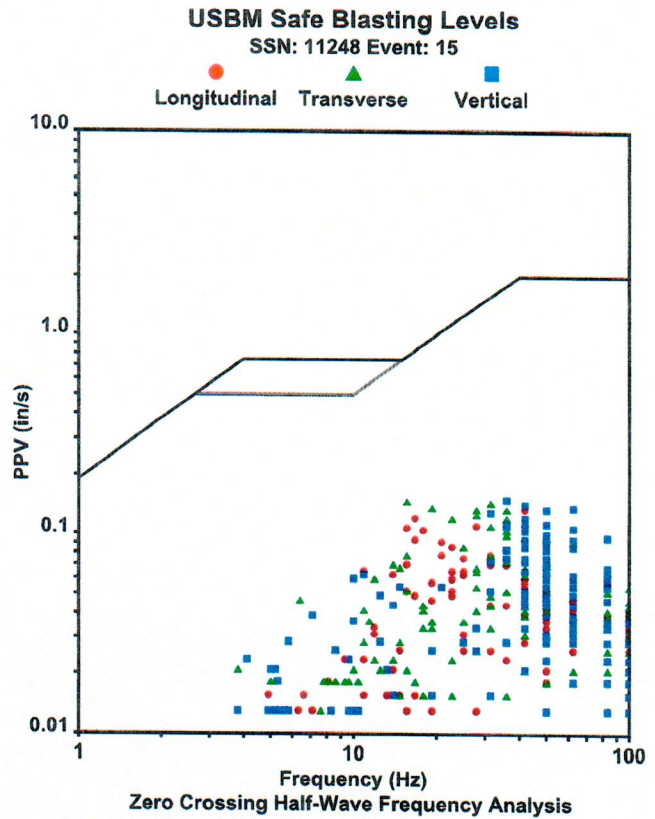
Summary Data

	L	T	V
PPV (in/s):	0.1275	0.14	0.1425
FREQ (HZ):	41.7	15.6	35.7
PD (.001"):	1.145	1.228	0.9475
PPA (g):	0.1172	0.1107	0.1302

Peak Vector Sum: 0.205 in/s
Peak Air Pressure: 109.1 dB
 0.0008 psi @ 4.2 HZ

Shaketable Calibrated

On: 08/09/2022 (UTC -04:00)
By: Vibra-Tech, Inc.
 2700 Holloway Road - Suite 113
 Louisville, KY 40203 U.S.A.

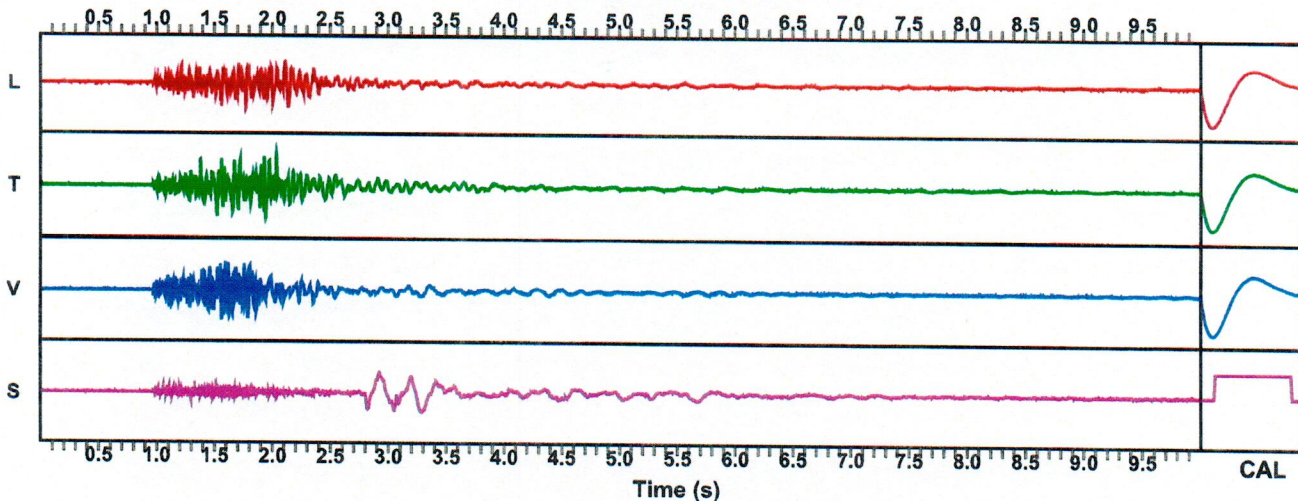


Waveform Graph Scale

Time Scale: 0.1 s
Seismic Scale: +/- 0.21375 in/s
Sound Scale: +/- 0.0023 psi

Velocity Waveform

SSN: 11248 Event: 15

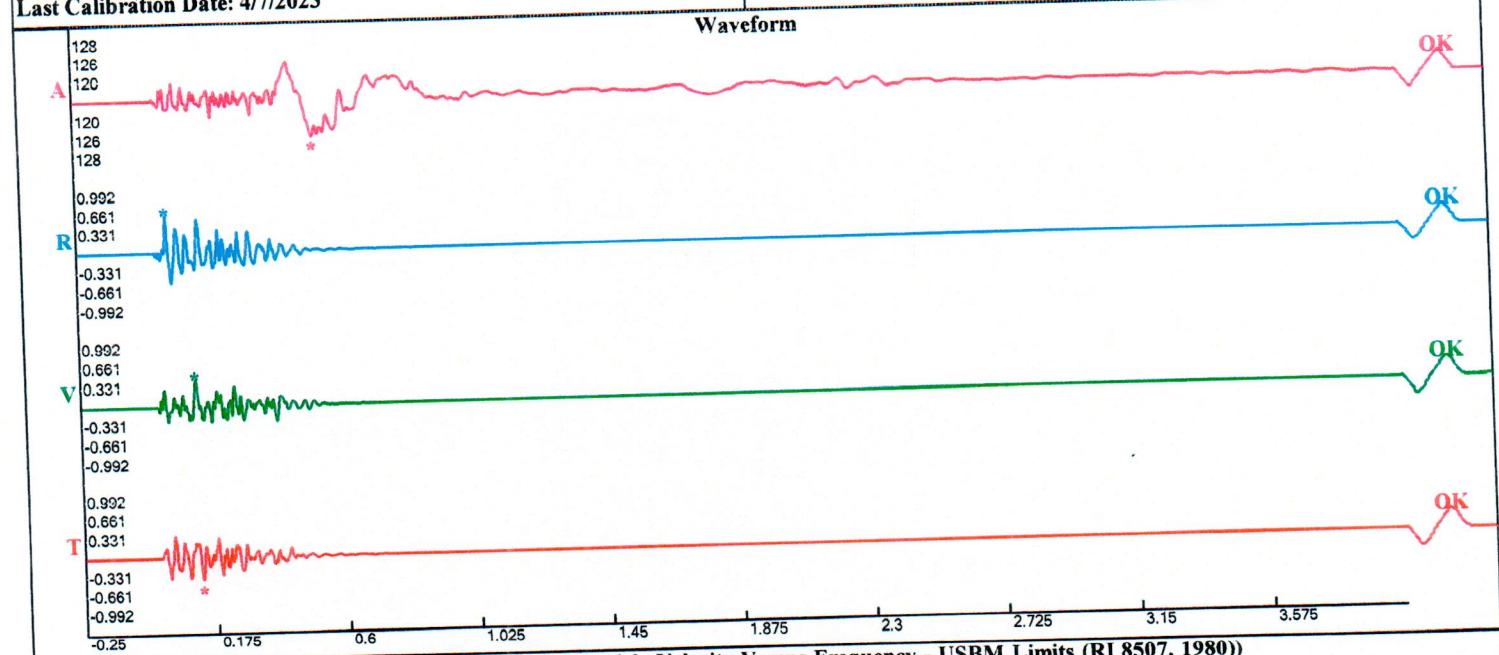


Quarry Construction Site
 Broad St
 Minton Lakes, New Jersey
 Seismo At:
 McPherson Hall

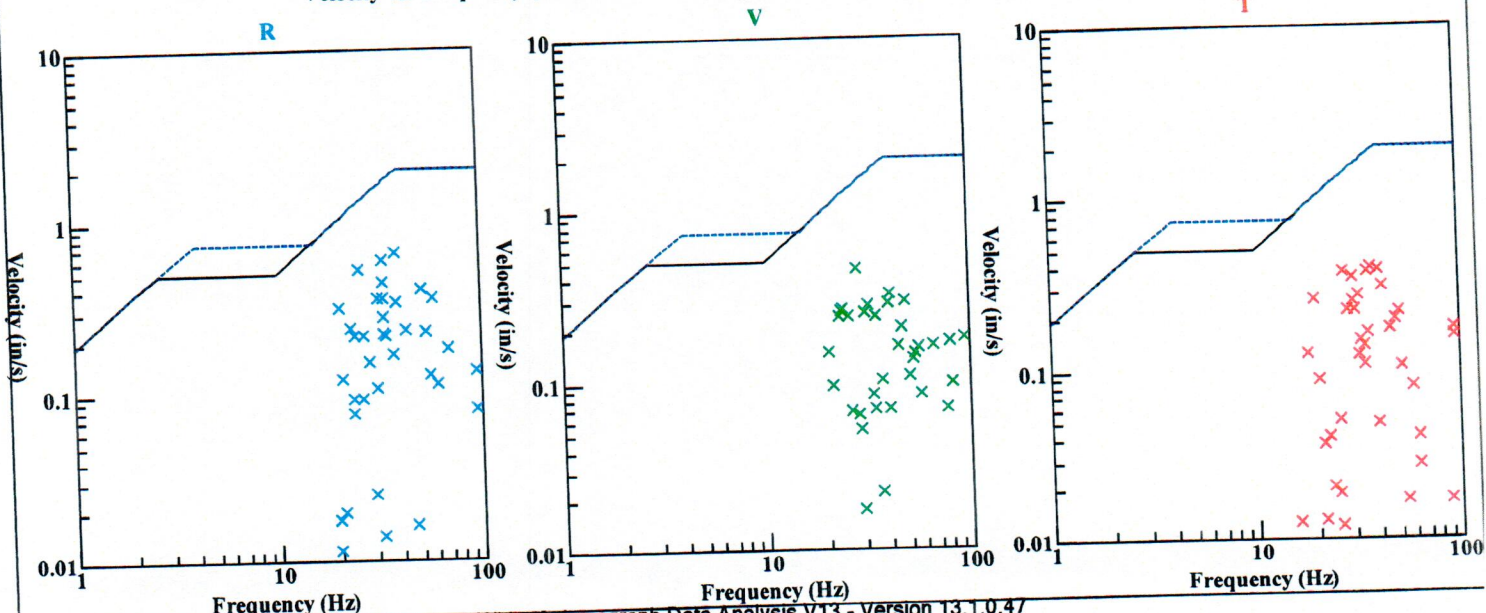
Record: bt2cvs02.evt
 Number: 0002
 Seismograph: Mini-Seis III 7964
 Type of Record: Waveform
 Date: 4/25/2023 11:00:08 AM
 Duration: 4.25 Seconds
 Sample Rate: 4096
 Pre-Trigger: 0.25 Seconds
 Seismic Trigger: 0.04 in/s
 Acoustic Trigger: 116.1 dB
 Seismic Gain: 10.24
 Acoustic Gain: 148.2 dB
 Voltage: 6.37

Peaks and Frequencies
 PPV Maximum (Geo #1): 0.661 in/s
 Acoustic #1: 125.4 dB @ 4.1 Hz (0.5183105 s)
 Radial #1: 0.661 in/s @ 37.9 Hz (0.03686523 s)
 Vertical #1: 0.451 in/s @ 28.1 Hz (0.119873 s)
 Transverse #1: 0.387 in/s @ 36.6 Hz (0.1286621 s)
 Displacement (Geo #1): 0.00369 in
 Acceleration (Geo #1): 0.427 g's
 Last Calibration Date: 4/7/2023

Graph Information
 Time Range: -0.25 s to 4 s, Intervals: 0.4250 Seconds



Velocity vs. Frequency (Particle Velocity Versus Frequency - USBM Limits (RI 8507, 1980))



Quarry Construction Site
 Broad St
 Mpton Lakes, New Jersey
 Seismo At:
 McPherson Hall

Record: bu2km203.evt
 Number: 0003
 Seismograph: Mini-Seis III 7964
 Type of Record: Waveform
 Date: 4/26/2023 12:00:27 PM
 Duration: 4.25 Seconds
 Sample Rate: 4096
 Pre-Trigger: 0.25 Seconds
 Seismic Trigger: 0.055 in/s
 Acoustic Trigger: 116.1 dB
 Seismic Gain: 10.24
 Acoustic Gain: 148.2 dB
 Voltage: 6.37

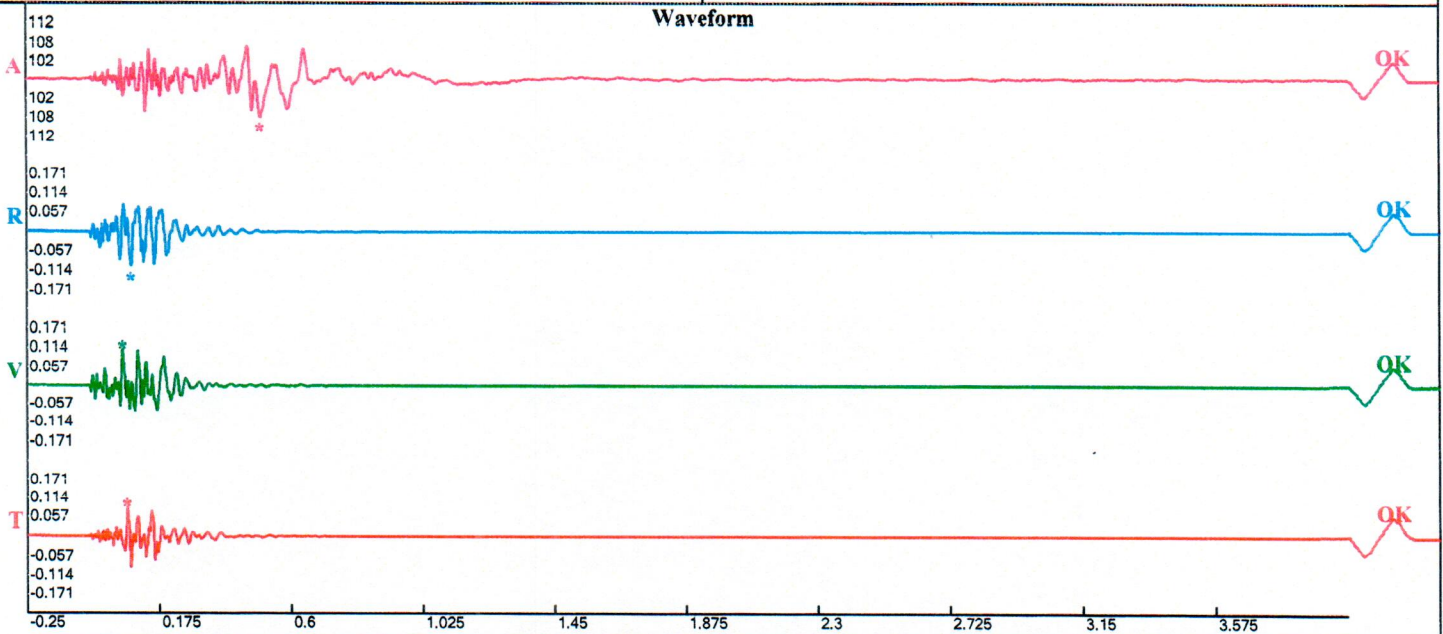
Peaks and Frequencies

PPV Maximum (Geo #1): 0.114 in/s
 Acoustic #1: 107.9 dB @ 8.0 Hz (0.5024414 s)
 Radial #1: 0.0972 in/s @ 34.7 Hz (0.08544922 s)
 Vertical #1: 0.114 in/s @ 35.9 Hz (0.05737305 s)
 Transverse #1: 0.0909 in/s @ 39.4 Hz (0.07128906 s)
 Displacement (Geo #1): 0.000748 in
 Acceleration (Geo #1): 0.113 g's
 Last Calibration Date: 4/7/2023

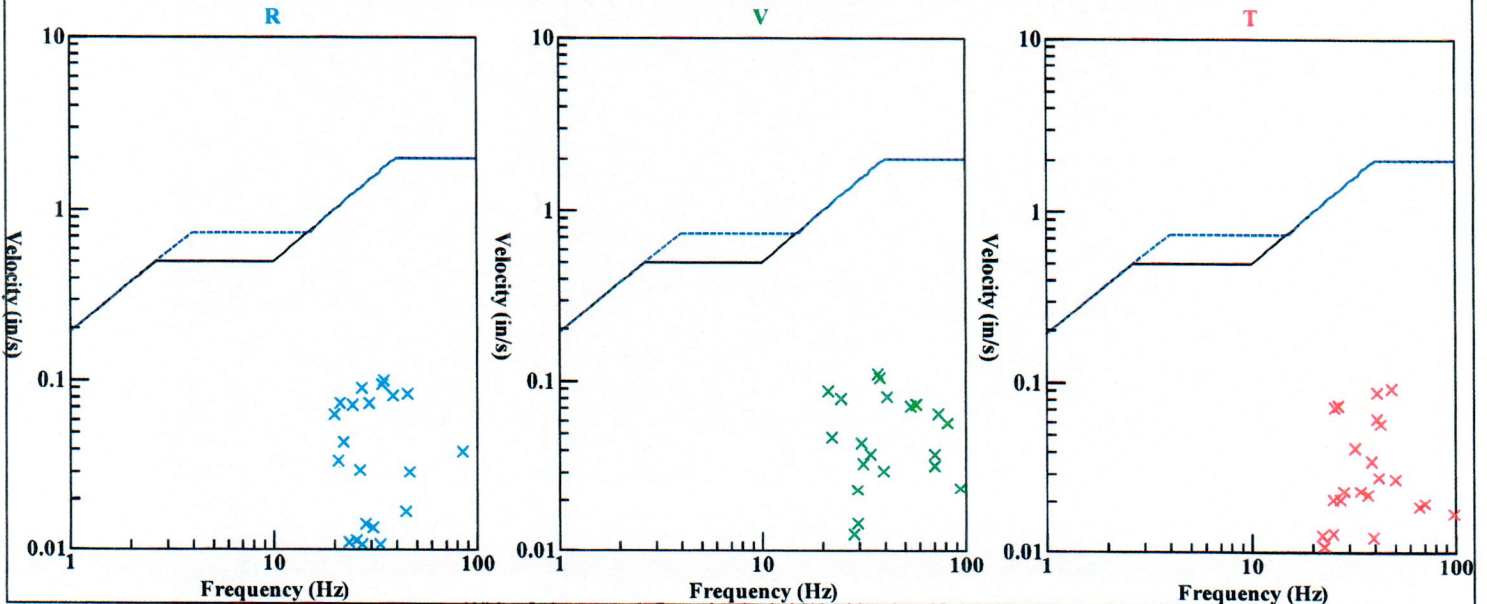
Graph Information

Time Range: -0.25 s to 4 s, Intervals: 0.4250 Seconds

Waveform



Velocity vs. Frequency (Particle Velocity Versus Frequency - USBM Limits (RI 8507, 1980))



...ry Construction Site
 ... St
 ... Lakes, New Jersey
 ... At:
 ...erson Hall

Record: 10082202304281201000012.proevt
 Number: 12
 Seismograph: Mini-Seis III Pro 10082
 Type of Record: Waveform
 Date: 4/28/2023 12:01:00 PM
 Duration: 4.25 Seconds
 Sample Rate: 4096
 Pre-Trigger: 0.25 Seconds
 Seismic Trigger: 0.04 in/s
 Acoustic Trigger: 110.2 dB
 Seismic Gain: 10.24
 Acoustic Gain: 148.2 dB
 Voltage: 6.42

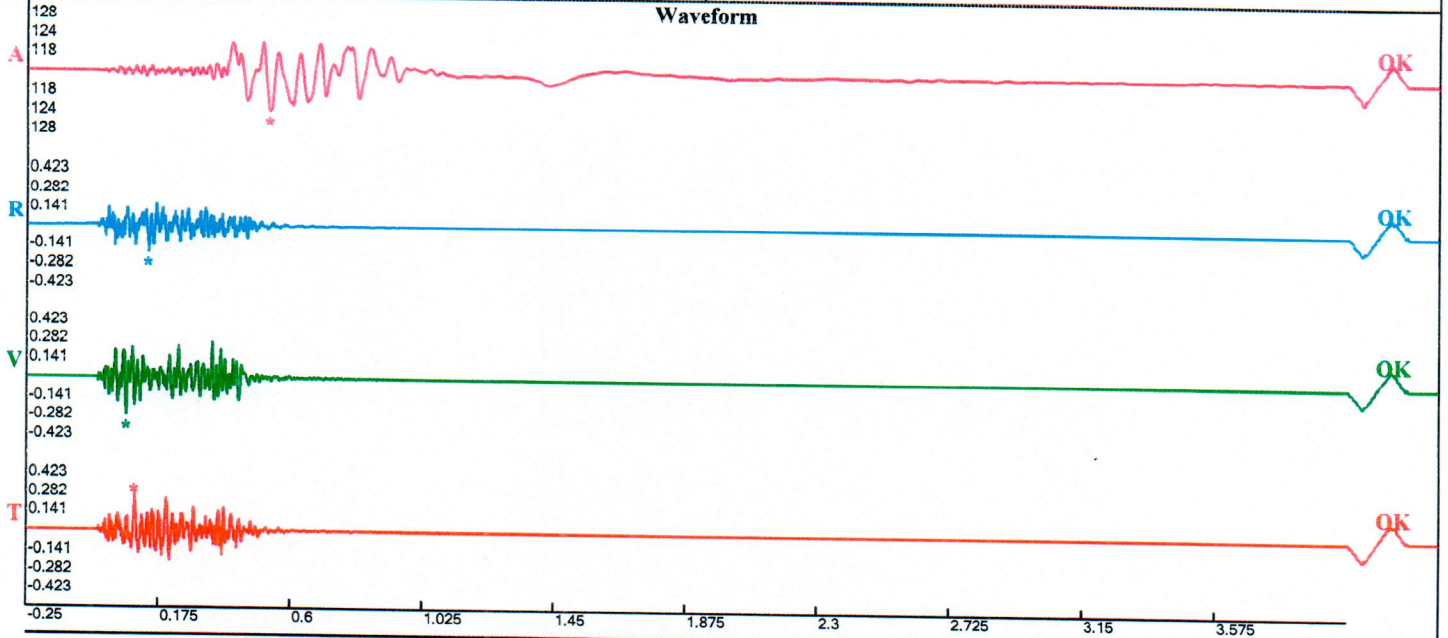
Peaks and Frequencies

PPV Maximum (Geo #1): 0.282 in/s
 Acoustic #1: 124.0 dB @ 17.2 Hz (0.5302734 s)
 Radial #1: 0.208 in/s @ 41.8 Hz (0.140625 s)
 Vertical #1: 0.281 in/s @ 58.5 Hz (0.07104492 s)
 Transverse #1: 0.282 in/s @ 42.7 Hz (0.09814453 s)
 Displacement (Geo #1): 0.000992 in
 Acceleration (Geo #1): 0.406 g's
 Last Calibration Date: 6/3/2022

Graph Information

Time Range: -0.25 s to 4 s, Intervals: 0.4250 Seconds

Waveform



Velocity vs. Frequency (Particle Velocity Versus Frequency - USBM Limits (RI 8507, 1980))

