



A CRH COMPANY

## FAX COVER SHEET

TILCON NEW YORK INC.  
9 Entin Road  
Parsippany, NJ 07054

**TO:** Ms. Iris Heredia

**FROM:** Daniel Naiman – Pompton Lakes Assistant Plant Manager

**SUBJECT:** Monthly Explosives Use Report

**TELEPHONE:** (973) 294-9299

**DATE:** 3/1/2023

**TOTAL PAGES:** 15 (Including Cover)

**MESSAGE:** Monthly explosives use report for Pompton Lakes Quarry

Month of February 2023

---

---

---

---

---

---

# Monthly Explosives Use Report

NOTE: COMPLETE ALL APPLICABLE ENTRIES ON FRONT AND REVERSE SIDES OF THIS FORM. THE COMPLETED FORM IS TO BE MAILED TO THE OFFICE OF SAFETY COMPLIANCE WITHIN 10 DAYS AFTER THE END OF THE MONTH FOR WHICH THE REPORT IS DUE.

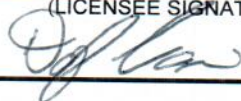
Name <u>Tilcon - Pompton Lakes Facility</u>	Phone No. <u>(973) 835-0028</u>
Street Address <u>Foot of Broad Street</u>	City <u>Pompton Lakes</u>
State <u>NJ</u>	Zip <u>07442</u>

MONTH AND YEAR OF REPORT <b>February 2023</b>	Explosives Lbs.	Detonator (Caps) No.	Gunpowder (Primer)	Other
Beginning Actual Count Inventory First of Month	-	-	-	
Purchases During the Month	37,417	657	-	
Total (Item 1 plus Item 2)	37,417	657	-	
Blasting Summary	37,417	657	-	
Miscellaneous Adjustments	-	-	-	
Month Ending Inventory on Hand by actual Count	-	-	-	
<b>Name of Supplier :</b>	<b>DATE</b>	<b>INV. #</b>		
Maine D&B	2/1/2023	142047	593	40
Maine D&B	2/2/2023	142112	7,246	92
Maine D&B	2/6/2023	142216	8,575	91
Maine D&B	2/9/2023	142386	8,295	91
Maine D&B	2/13/2023	142533	731	47
Maine D&B	2/14/2023	142589	1,597	15
Maine D&B	2/15/2023	142650	674	42
Maine D&B	2/16/2023	142698	7,688	90
Maine D&B	2/17/2023	142781	421	40
Maine D&B	2/22/2023	142935	776	55

**TOTAL NUMBER OF BLASTS - 11**

Comments: blasts continued on next page

MAIL TO OFFICE OF PUBLIC SAFETY COMPLIANCE, PO BOX 386, TRENTON, NEW JERSEY 08625-0386  
PHONE: (609) 292-2096 FAX: (609) 777-4589

**Tilcon - Pompton Lakes Facility**  
(LICENSEE SIGNATURE)  


# Monthly Explosives Use Report

NOTE: COMPLETE ALL APPLICABLE ENTRIES ON FRONT AND REVERSE SIDES OF THIS FORM. THE COMPLETED FORM IS TO BE MAILED TO THE OFFICE OF SAFETY COMPLIANCE WITHIN 10 DAYS AFTER THE END OF THE MONTH FOR WHICH THE REPORT IS DUE.

Name <u>Tilcon - Pompton Lakes Facility</u>	Phone No. <u>(973) 835-0028</u>
Street Address <u>Foot of Broad Street</u>	City <u>Pompton Lakes</u>
State <u>NJ</u>	Zip <u>07442</u>

MONTH AND YEAR OF REPORT <b>February 2023</b>	Explosives Lbs.	Detonator (Caps) No.	Gunpowder (Primer)	Other
Beginning Actual Count Inventory First of Month	-	-	-	
Purchases During the Month	37,417	657	-	
Total (Item 1 plus Item 2)	37,417	657	-	
Blasting Summary	37,417	657	-	
Miscellaneous Adjustments	-	-	-	
Month Ending Inventory on Hand by actual Count	-	-	-	
Name of Supplier :	DATE	INV. #		
Maine D&B	2/24/2023	143051	821	54

**TOTAL NUMBER OF BLASTS - 11**

Comments:

---



---



---



---

MAIL TO OFFICE OF PUBLIC SAFETY COMPLIANCE, PO BOX 386, TRENTON, NEW JERSEY 08625-0386  
 PHONE: (609) 292-2096 FAX: (609) 777-4589

**Tilcon - Pompton Lakes Facility**  
 (LICENSEE SIGNATURE)

## EXPLOSIVES USED IN BLASTING

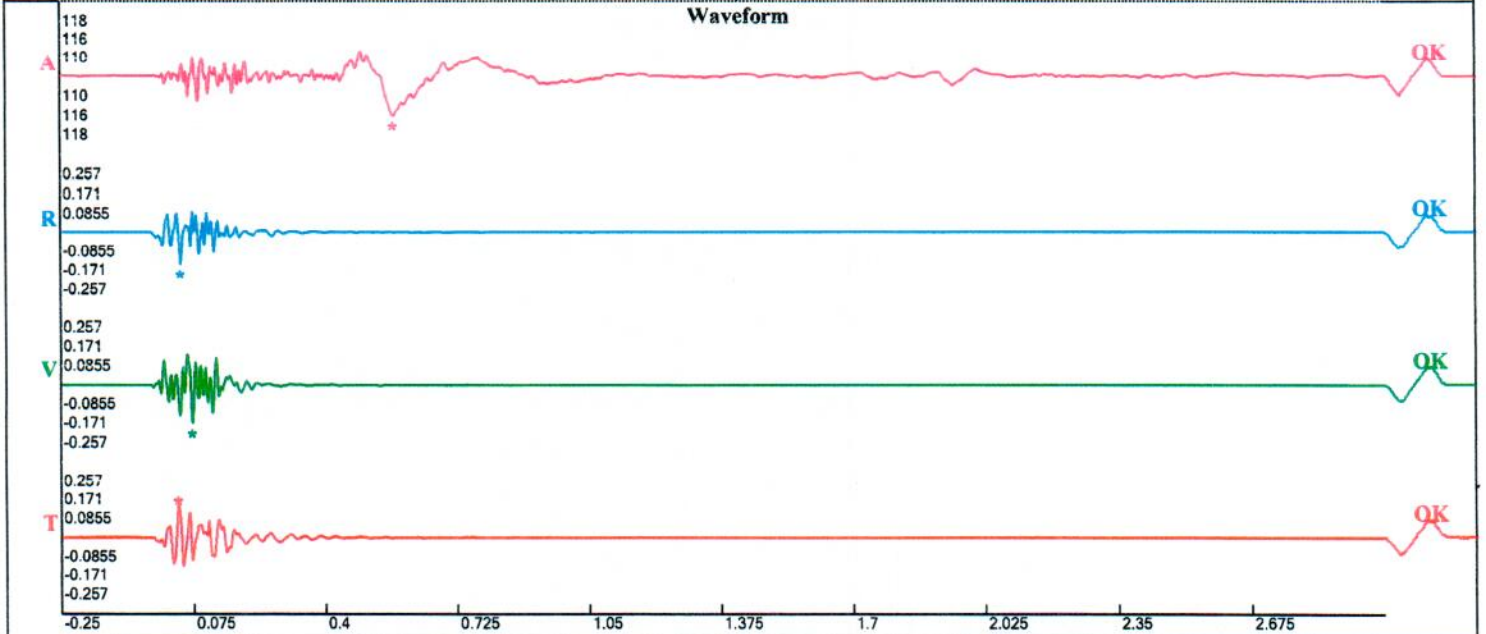
Shots	Date	Time	Site Location	Name of Blaster	Permit #	High Explo. Lbs.	Caps or Det.	Max. lbs. Per Delay	Nearest Structure (Feet)	Seismic PPV and Frequency		Seismic D B Level	Type of Shot (Bank, Trench, Etc.)
										Trans.	Vert. Long.		
SHOT 53ER-23	2/1	12:00PM	Tilcon Pompton Lakes	John Currier	10259	593	40	63	469	PPV: .147 HZ: 40.2	.171 58.5	115.1	Pre-split
SHOT 54ER-23	2/2	12:30PM	Tilcon Pompton Lakes	John Currier	10259	7,246	92	322	547	PPV: .174 HZ: 29.3	.141 29.7	119.5	Mass
SHOT 55ER-23	2/6	1:30PM	Tilcon Pompton Lakes	John Currier	10259	8,575	91	572	575	PPV: .172 HZ: 28.4	.185 28.1	125.1	Mass
SHOT 56ER-23	2/9	12:30PM	Tilcon Pompton Lakes	John Currier	10259	8,295	91	369	580	PPV: .189 HZ: 30.6	.160 45.5	121.1	Mass
SHOT 57ER-23	2/13	2:00PM	Tilcon Pompton Lakes	John Mazzola	008	731	47	72	411	PPV: .260 HZ: 26.9	.341 41.8	113.3	Pre-split
SHOT 58ER-23	2/14	11:00AM	Tilcon Pompton Lakes	John Currier	10259	1,597	15	240	505	PPV: .128 HZ: 33.0	.139 70.6	114.6	Mass
SHOT 59ER-23	2/15	11:30AM	Tilcon Pompton Lakes	John Currier	10259	674	42	64	416	PPV: .277 HZ: 36.6	.366 47.6	116.7	Pre-split
SHOT 60ER-23	2/16	12:30PM	Tilcon Pompton Lakes	John Currier	10259	7,688	90	513	625	PPV: .138 HZ: 23.3	.116 39.4	119.7	Mass
SHOT 61ER-23	2/17	11:00AM	Tilcon Pompton Lakes	John Currier	10259	421	40	47	483	PPV: .228 HZ: 38.6	.278 64.0	110.9	Pre-split
SHOT 62ER-23	2/22	12:00PM	Tilcon Pompton Lakes	John Currier	10259	776	55	60	455	PPV: .150 HZ: 26.3	.218 30.6	112.1	Pre-split
SHOT 63ER-23	2/24	11:15AM	Tilcon Pompton Lakes	John Currier	10259	821	54	64	406	PPV: .134 HZ: 29.7	.086 21.1	112.7	Pre-split
SHOT			Tilcon Pompton Lakes							PPV: HZ:			
SHOT			Tilcon Pompton Lakes							PPV: HZ:			
SHOT			Tilcon Pompton Lakes							PPV: HZ:			
SHOT			Tilcon Pompton Lakes							PPV: HZ:			
SHOT			Tilcon Pompton Lakes							PPV: HZ:			
<b>TOTALS</b>						<b>37,417</b>	<b>657</b>						

Quarry Construction Site  
 Road St  
 Merton Lakes, New Jersey  
 Seismo At:  
 Bersick Lodge

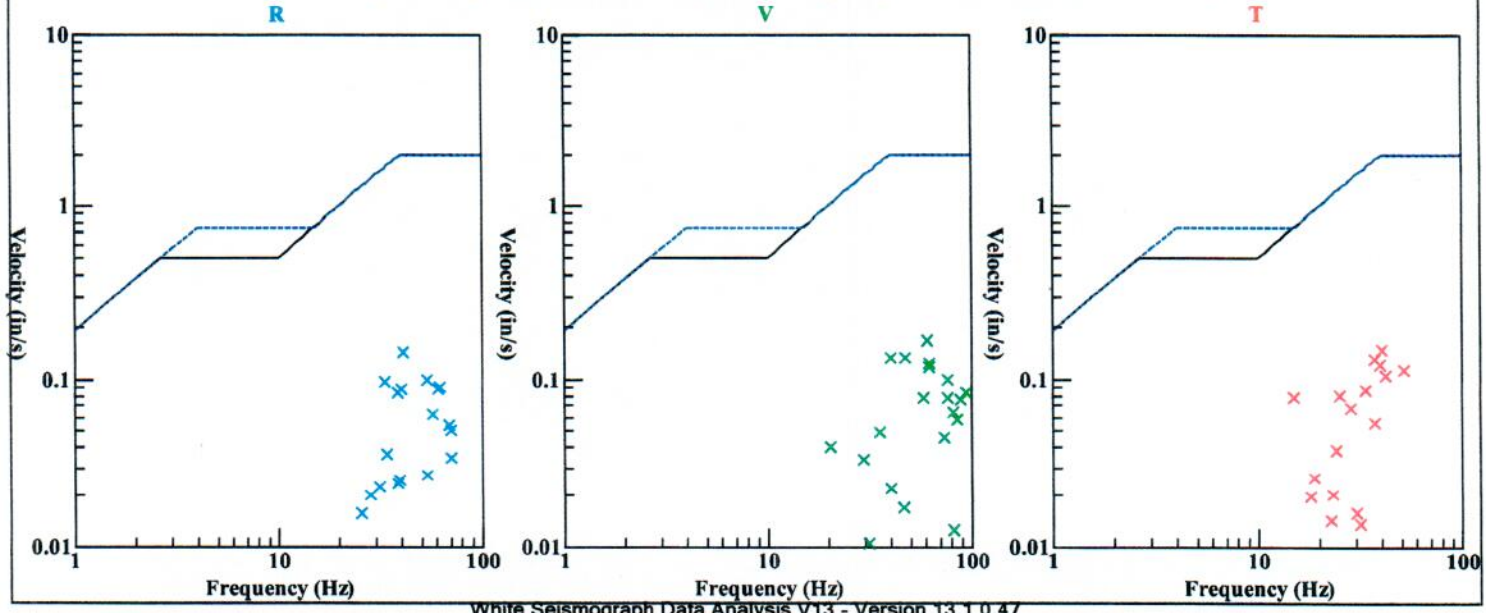
Record: 10072202302011159520184.prov  
 Number: 184  
 Seismograph: Mini-Seis III Pro 10072  
 Type of Record: Waveform  
 Date: 2/1/2023 11:59:52 AM  
 Duration: 3.25 Seconds  
 Sample Rate: 4096  
 Pre-Trigger: 0.25 Seconds  
 Seismic Trigger: 0.065 in/s  
 Acoustic Trigger: 115.0 dB  
 Seismic Gain: 10.24  
 Acoustic Gain: 148.2 dB  
 Voltage: 6.55

**Peaks and Frequencies**  
 PPV Maximum (Geo #1): 0.171 in/s  
 Acoustic #1: 115.1 dB @ 3.8 Hz (0.5683594 s)  
 Radial #1: 0.143 in/s @ 41.0 Hz (0.04394531 s)  
 Vertical #1: 0.171 in/s @ 58.5 Hz (0.07299805 s)  
 Transverse #1: 0.147 in/s @ 40.2 Hz (0.03662109 s)  
 Displacement (Geo #1): 0.0008 in  
 Acceleration (Geo #1): 0.174 g's  
 Last Calibration Date: 5/19/2022

**Graph Information**  
 Time Range: -0.25 s to 3 s, Intervals: 0.3250 Seconds



Velocity vs. Frequency (Particle Velocity Versus Frequency - USBM Limits (RI 8507, 1980))



Barry Construction Site  
 Road St  
 Ton Lakes, New Jersey  
 mo At:  
 sick Lodge

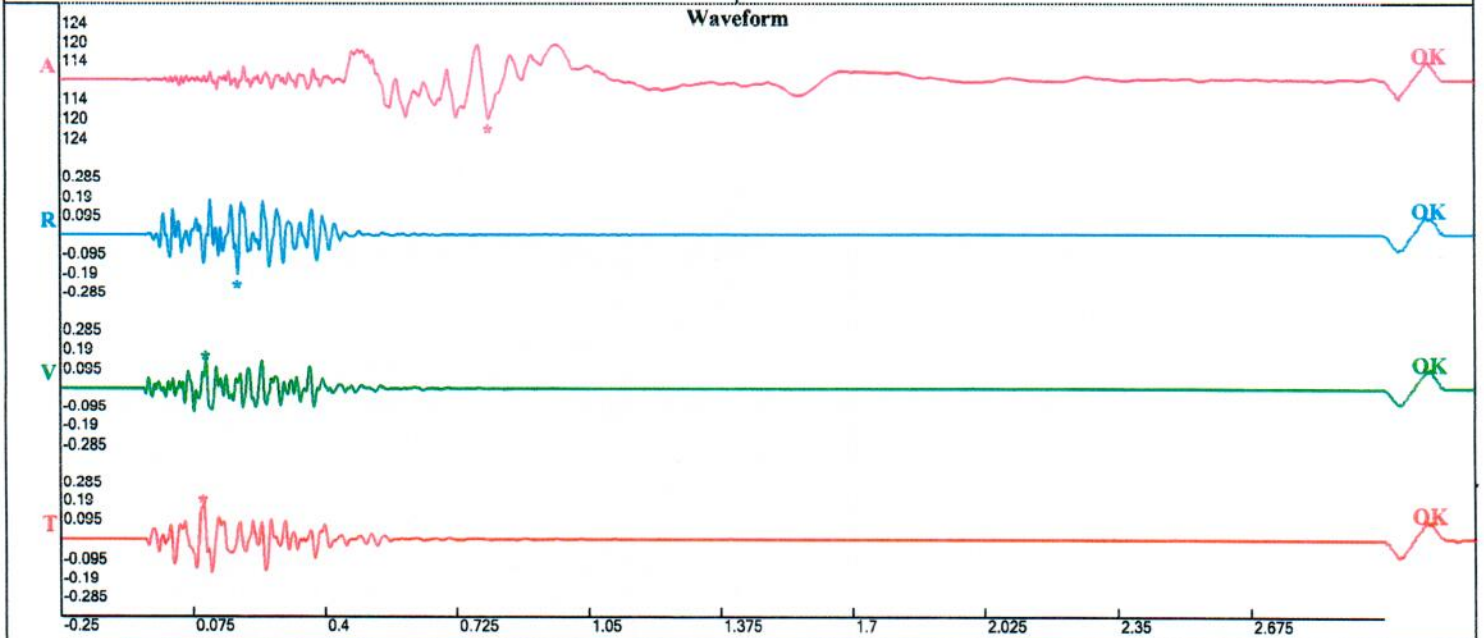
Record: 10072202302021229370185.proevt  
 Number: 185  
 Seismograph: Mini-Seis III Pro 10072  
 Type of Record: Waveform  
 Date: 2/2/2023 12:29:37 PM  
 Duration: 3.25 Seconds  
 Sample Rate: 4096  
 Pre-Trigger: 0.25 Seconds  
 Seismic Trigger: 0.065 in/s  
 Acoustic Trigger: 115.0 dB  
 Seismic Gain: 10.24  
 Acoustic Gain: 148.2 dB  
 Voltage: 6.51

**Peaks and Frequencies**

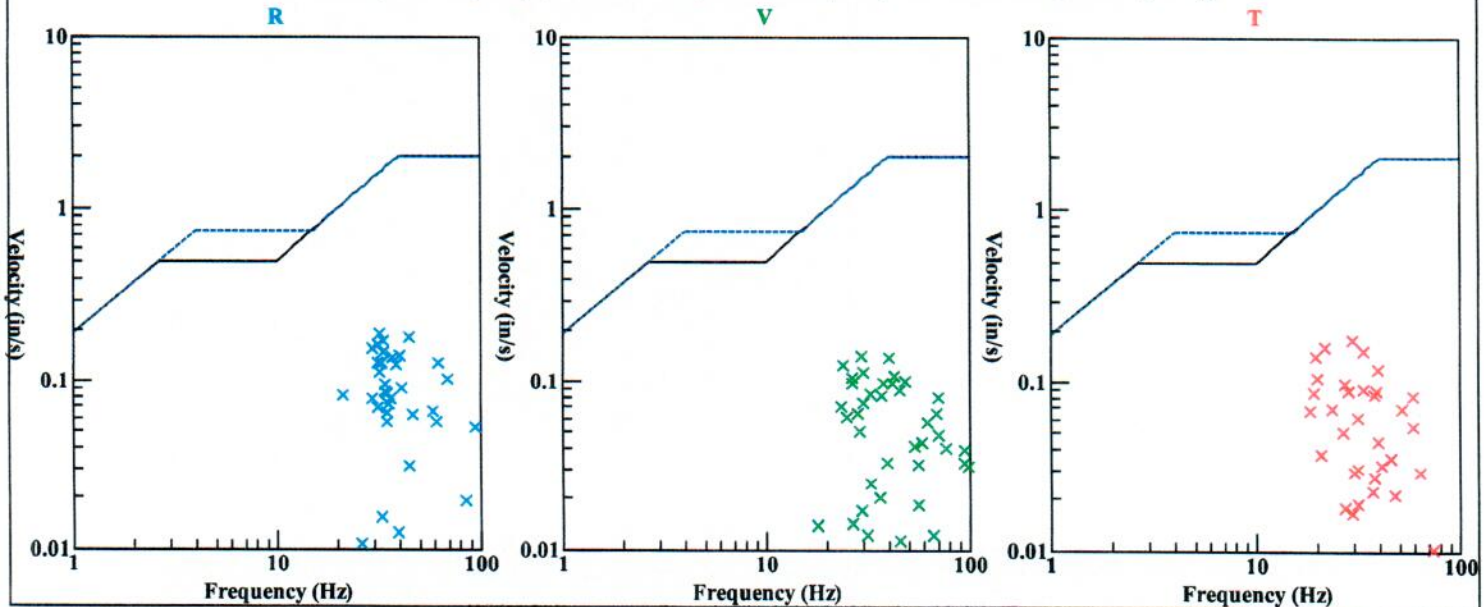
**Graph Information**

PPV Maximum (Geo #1): 0.19 in/s  
 Acoustic #1: 119.5 dB @ 10.0 Hz (0.8032227 s)  
 Radial #1: 0.19 in/s @ 31.5 Hz (0.1860352 s)  
 Vertical #1: 0.141 in/s @ 29.7 Hz (0.1064453 s)  
 Transverse #1: 0.174 in/s @ 29.3 Hz (0.09887695 s)  
 Displacement (Geo #1): 0.0011 in  
 Acceleration (Geo #1): 0.225 g's  
 Last Calibration Date: 5/19/2022

Time Range: -0.25 s to 3 s, Intervals: 0.3250 Seconds



Velocity vs. Frequency (Particle Velocity Versus Frequency - USBM Limits (RI 8507, 1980))



Construction Site

at  
Lakes, New Jersey  
i:  
Lodge

Record: 10072202302061329420186.proevt  
Number: 186  
Seismograph: Mini-Seis III Pro 10072  
Type of Record: Waveform  
Date: 2/6/2023 1:29:42 PM  
Duration: 3.25 Seconds  
Sample Rate: 4096  
Pre-Trigger: 0.25 Seconds  
Seismic Trigger: 0.065 in/s  
Acoustic Trigger: 115.0 dB  
Seismic Gain: 10.24  
Acoustic Gain: 148.2 dB  
Voltage: 6.52

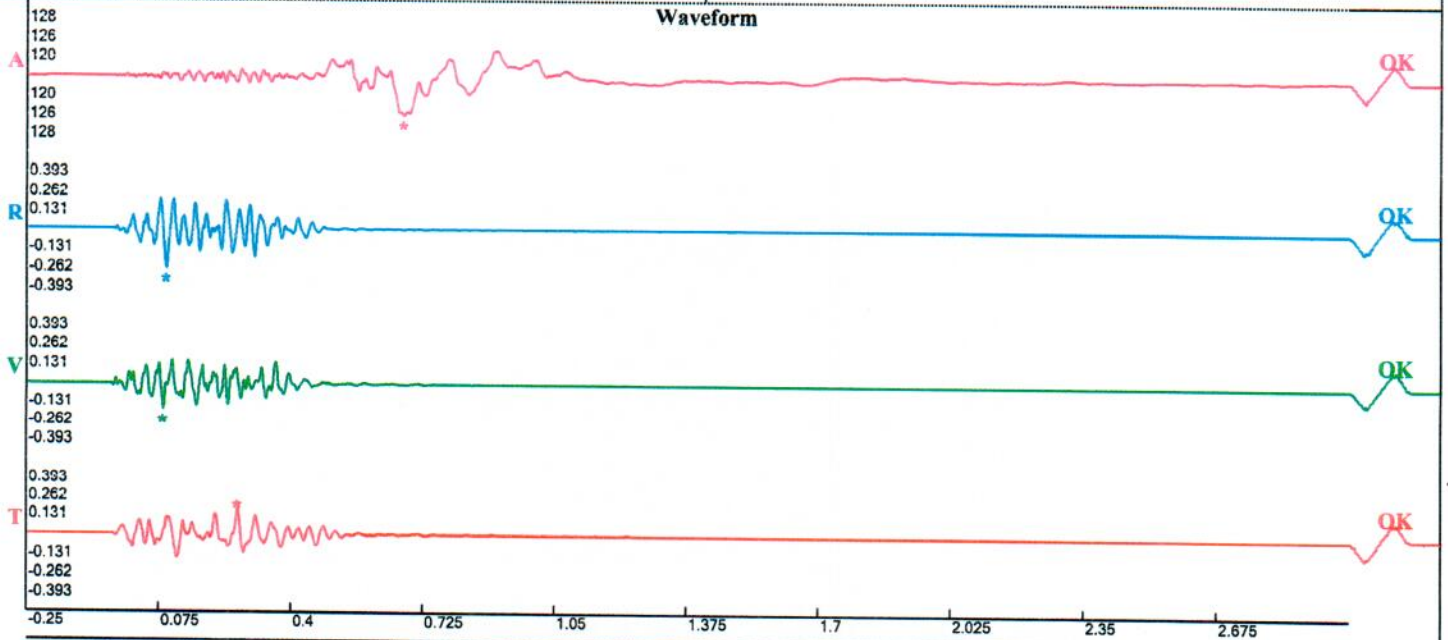
Peaks and Frequencies

PPV Maximum (Geo #1): 0.262 in/s  
Acoustic #1: 125.1 dB @ 4.6 Hz (0.6750488 s)  
Radial #1: 0.262 in/s @ 32.0 Hz (0.0925293 s)  
Vertical #1: 0.185 in/s @ 28.1 Hz (0.08544922 s)  
Transverse #1: 0.172 in/s @ 28.4 Hz (0.2678223 s)  
Displacement (Geo #1): 0.00119 in  
Acceleration (Geo #1): 0.156 g's  
Last Calibration Date: 5/19/2022

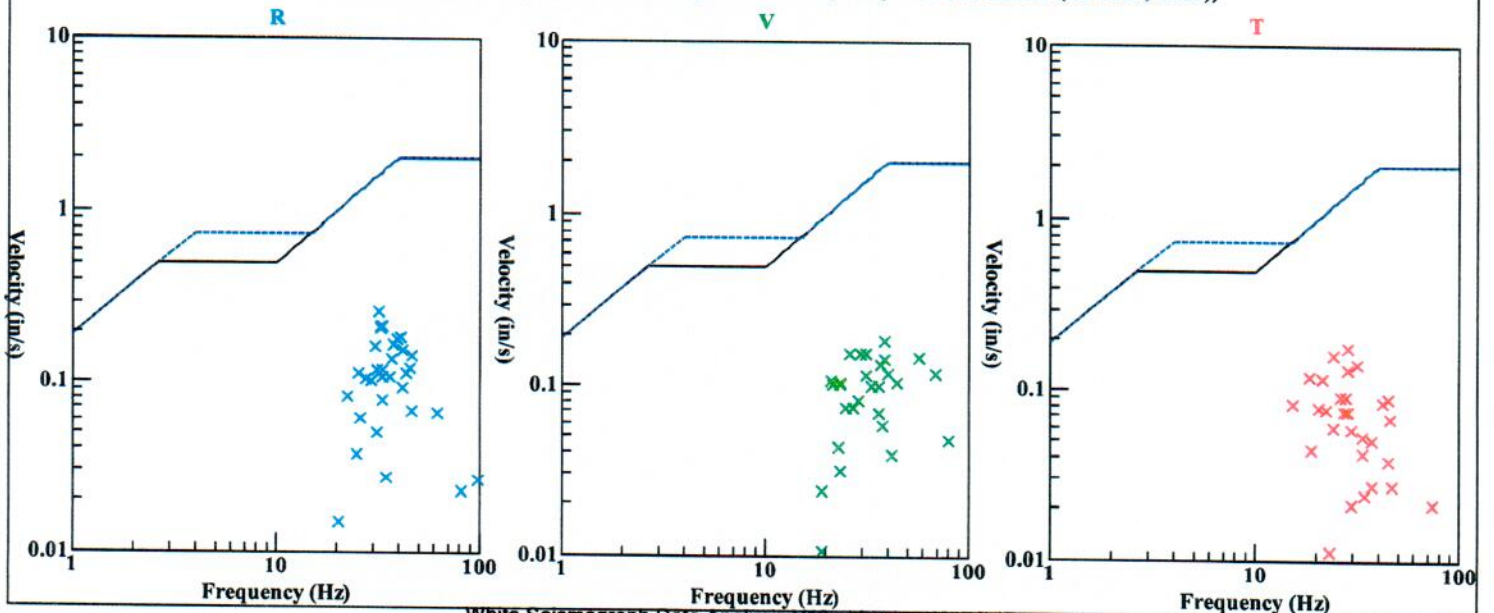
Graph Information

Time Range: -0.25 s to 3 s, Intervals: 0.3250 Seconds

Waveform



Velocity vs. Frequency (Particle Velocity Versus Frequency - USBM Limits (RI 8507, 1980))



Barry Construction Site  
 Road St  
 Hampton Lakes, New Jersey  
 Seismo At:  
 Jersick Lodge

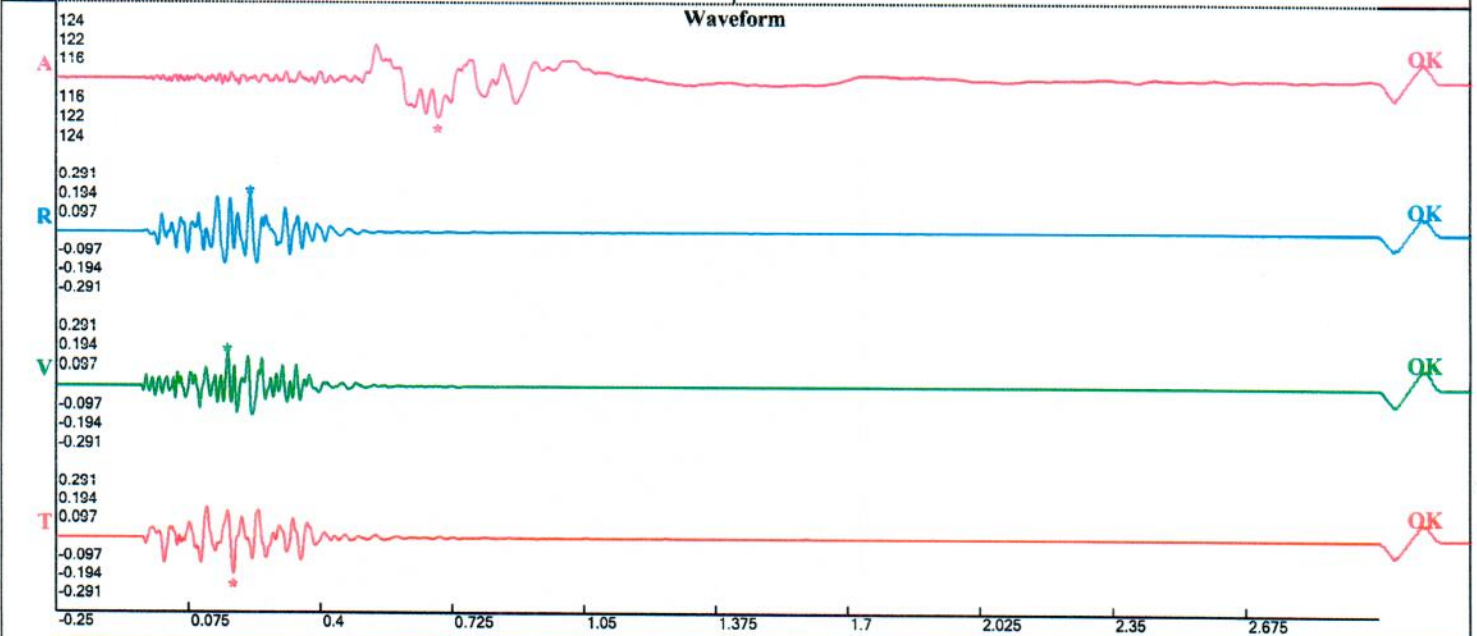
Record: 10072202302091229560187.proevt  
 Number: 187  
 Seismograph: Mini-Seis III Pro 10072  
 Type of Record: Waveform  
 Date: 2/9/2023 12:29:56 PM  
 Duration: 3.25 Seconds  
 Sample Rate: 4096  
 Pre-Trigger: 0.25 Seconds  
 Seismic Trigger: 0.065 in/s  
 Acoustic Trigger: 115.0 dB  
 Seismic Gain: 10.24  
 Acoustic Gain: 148.2 dB  
 Voltage: 6.48

Peaks and Frequencies

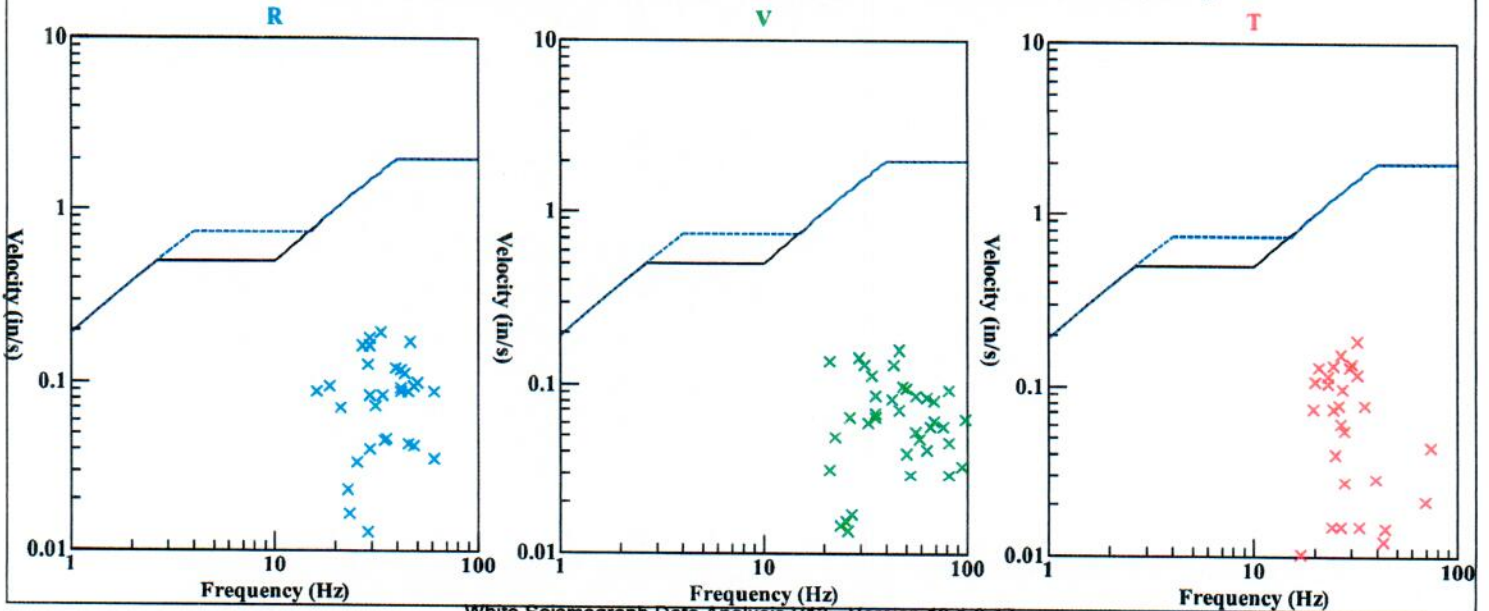
PPV Maximum (Geo #1): 0.194 in/s  
 Acoustic #1: 121.1 dB @ 3.9 Hz (0.6884766 s)  
 Radial #1: 0.194 in/s @ 33.6 Hz (0.2277832 s)  
 Vertical #1: 0.16 in/s @ 45.5 Hz (0.1706543 s)  
 Transverse #1: 0.189 in/s @ 30.6 Hz (0.184082 s)  
 Displacement (Geo #1): 0.00117 in  
 Acceleration (Geo #1): 0.131 g's  
 Last Calibration Date: 5/19/2022

Graph Information

Time Range: -0.25 s to 3 s, Intervals: 0.3250 Seconds



Velocity vs. Frequency (Particle Velocity Versus Frequency - USBM Limits (RI 8507, 1980))







Peaks and Frequencies

PPV Maximum (Geo #1): 0.341 in/s

Acoustic #1: 113.3 dB @ 55.4 Hz (0.1491609 s)

Radial #1: 0.252 in/s @ 28.8 Hz (0.1152344 s)

Vertical #1: 0.341 in/s @ 41.8 Hz (0.1057129 s)

Transverse #1: 0.26 in/s @ 26.9 Hz (0.1391602 s)

Displacement (Geo #1): 0.00152 in

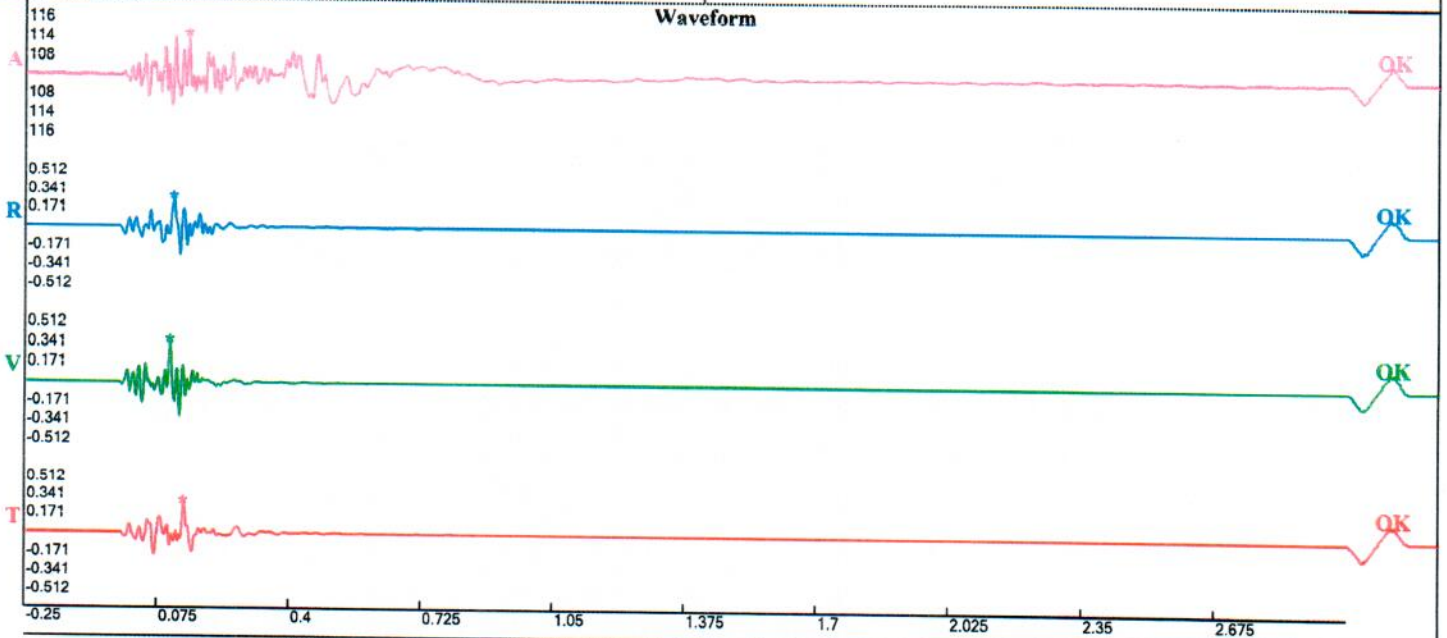
Acceleration (Geo #1): 0.255 g's

Last Calibration Date: 5/24/2022

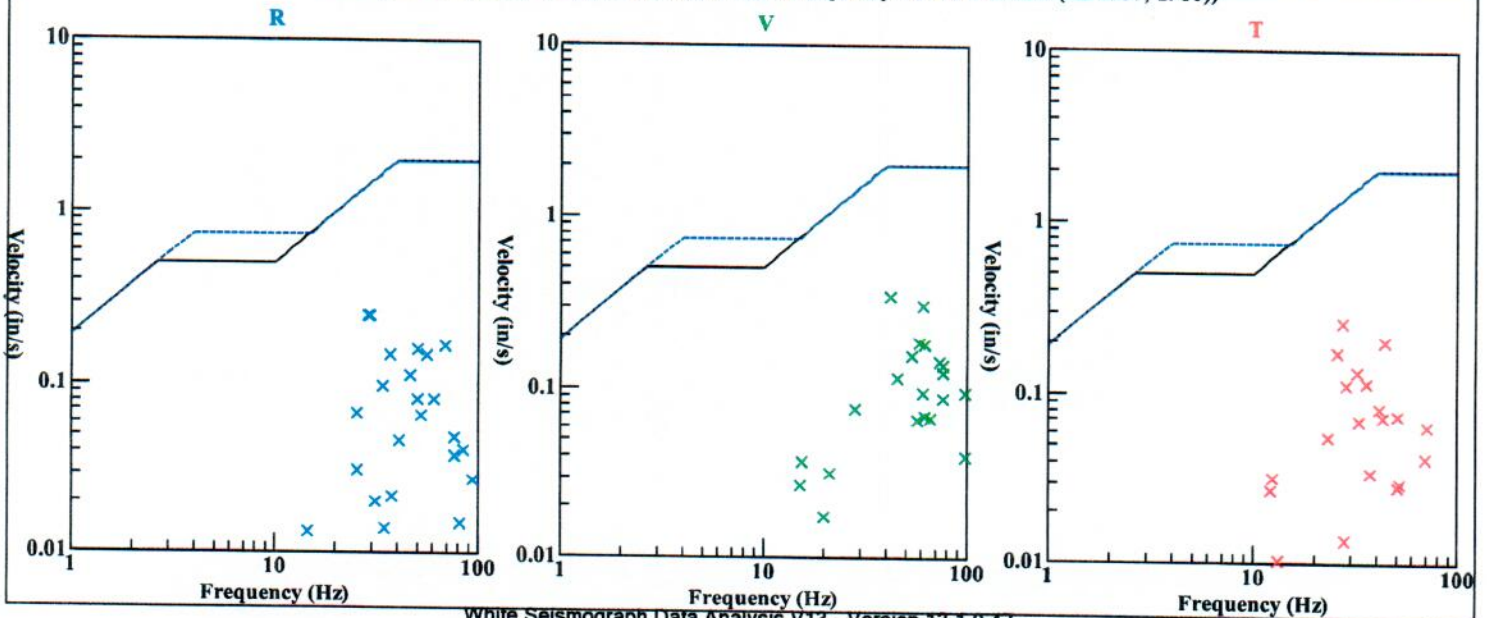
Graph Information

Time Range: -0.25 s to 3 s, Intervals: 0.3250 Seconds

Waveform



Velocity vs. Frequency (Particle Velocity Versus Frequency - USBM Limits (RI 8507, 1980))



Barry Construction Site  
 Road St  
 Apton Lakes, New Jersey  
 Seismo At:  
 Jersick Lodge

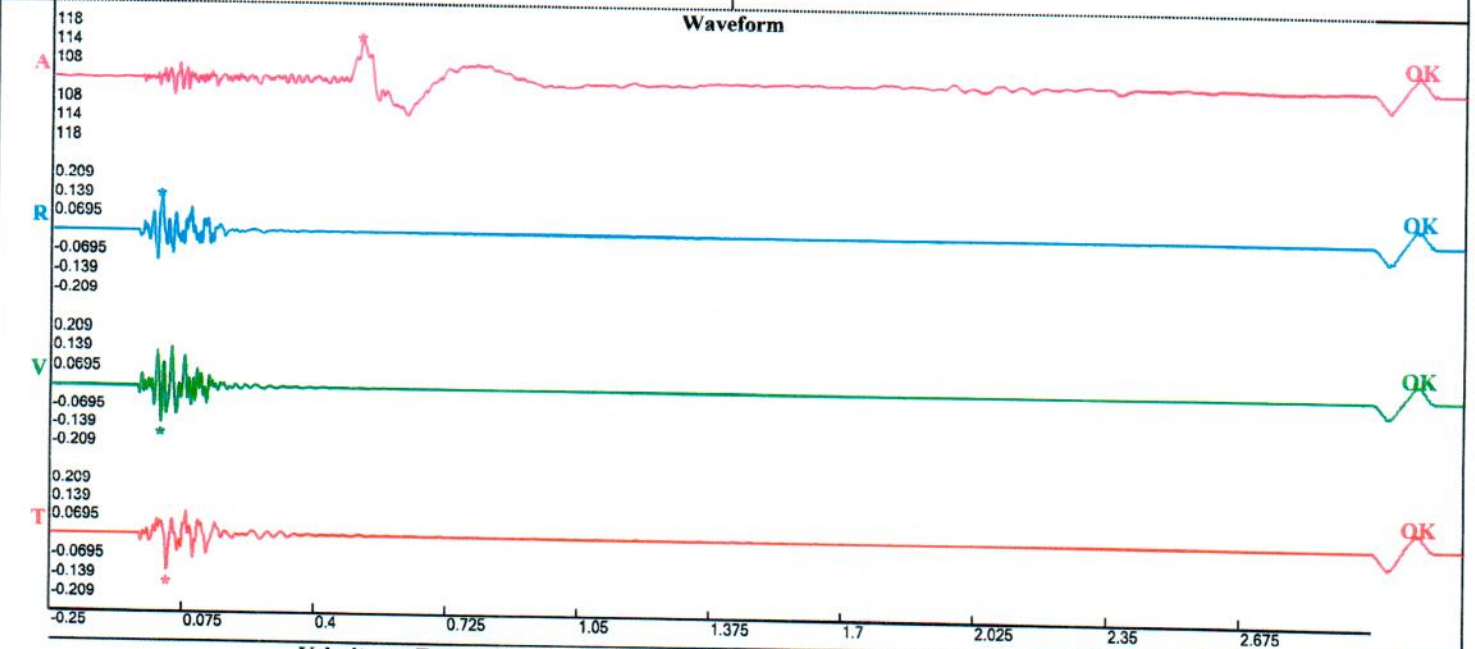
Record: 10072202302141059570188.proevt  
 Number: 188  
 Seismograph: Mini-Seis III Pro 10072  
 Type of Record: Waveform  
 Date: 2/14/2023 10:59:57 AM  
 Duration: 3.25 Seconds  
 Sample Rate: 4096  
 Pre-Trigger: 0.25 Seconds  
 Seismic Trigger: 0.065 in/s  
 Acoustic Trigger: 115.0 dB  
 Seismic Gain: 10.24  
 Acoustic Gain: 148.2 dB  
 Voltage: 6.45

**Peaks and Frequencies**

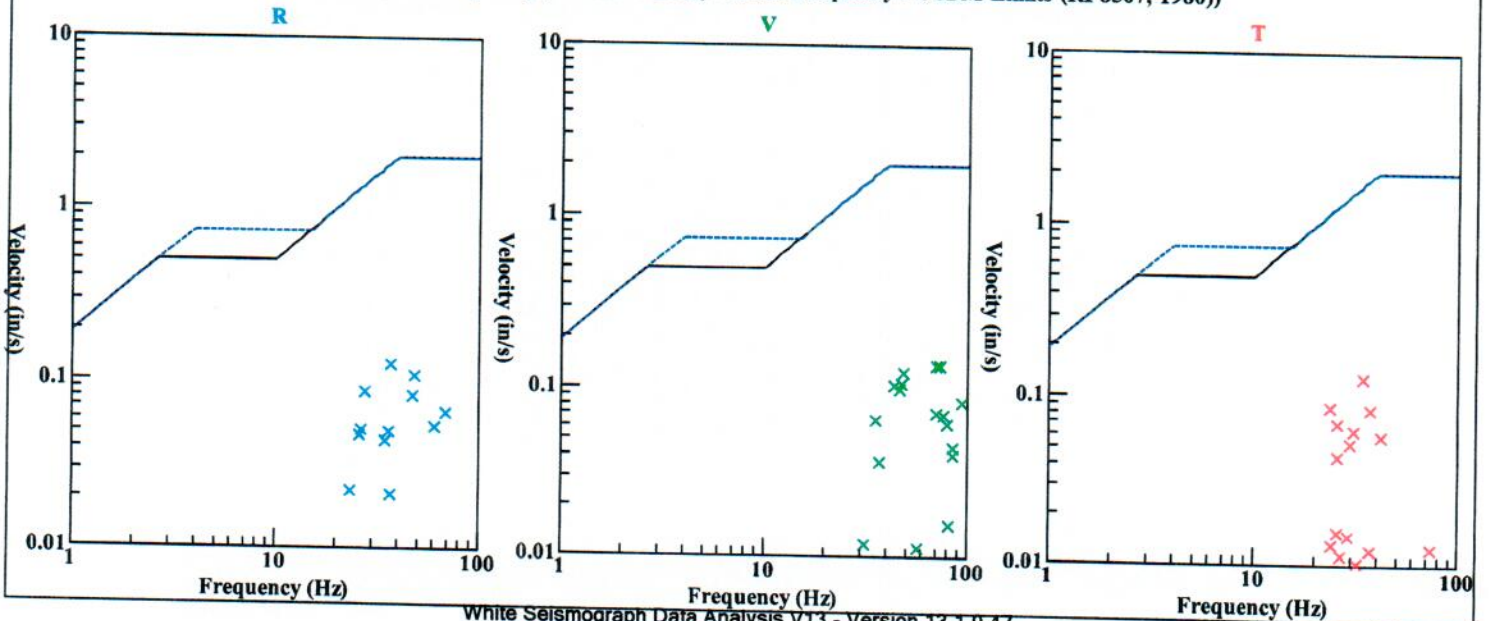
PPV Maximum (Geo #1): 0.139 in/s  
 Acoustic #1: 114.6 dB @ 8.4 Hz (0.5097656 s)  
 Radial #1: 0.124 in/s @ 37.2 Hz (0.02075195 s)  
 Vertical #1: 0.139 in/s @ 70.6 Hz (0.02197266 s)  
 Transverse #1: 0.128 in/s @ 33.0 Hz (0.03637695 s)  
 Displacement (Geo #1): 0.000656 in  
 Acceleration (Geo #1): 0.157 g's  
 Last Calibration Date: 5/19/2022

**Graph Information**

Time Range: -0.25 s to 3 s, Intervals: 0.3250 Seconds



Velocity vs. Frequency (Particle Velocity Versus Frequency - USBM Limits (RI 8507, 1980))



Harry Construction Site  
 Road St  
 Ton Lakes, New Jersey  
 mo At:  
 rsick Lodge

Record: 10072202302151130070190.proevt  
 Number: 190  
 Seismograph: Mini-Seis III Pro 10072  
 Type of Record: Waveform  
 Date: 2/15/2023 11:30:07 AM  
 Duration: 3.25 Seconds  
 Sample Rate: 4096  
 Pre-Trigger: 0.25 Seconds  
 Seismic Trigger: 0.065 in/s  
 Acoustic Trigger: 115.0 dB  
 Seismic Gain: 10.24  
 Acoustic Gain: 148.2 dB  
 Voltage: 6.47

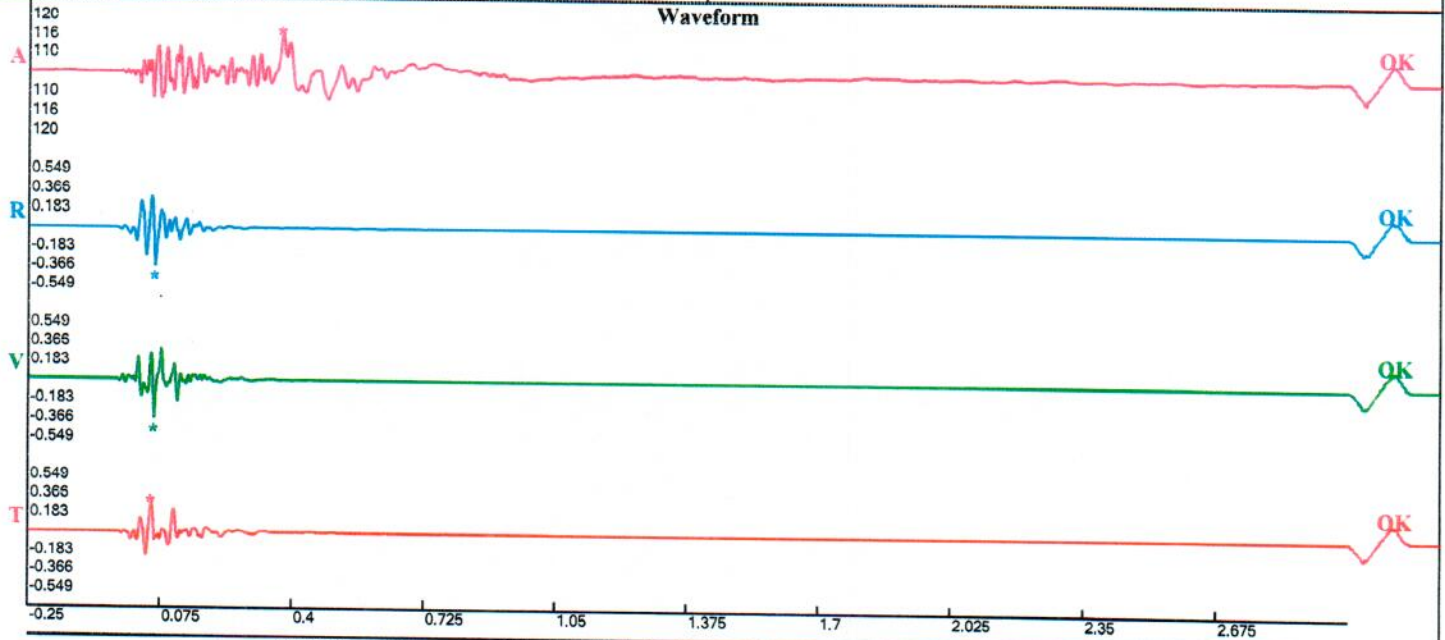
**Peaks and Frequencies**

PPV Maximum (Geo #1): 0.366 in/s  
 Acoustic #1: 116.7 dB @ 11.4 Hz (0.3730469 s)  
 Radial #1: 0.363 in/s @ 39.4 Hz (0.0612793 s)  
 Vertical #1: 0.366 in/s @ 47.6 Hz (0.05981445 s)  
 Transverse #1: 0.277 in/s @ 36.6 Hz (0.05249023 s)  
 Displacement (Geo #1): 0.00159 in  
 Acceleration (Geo #1): 0.441 g's  
 Last Calibration Date: 5/19/2022

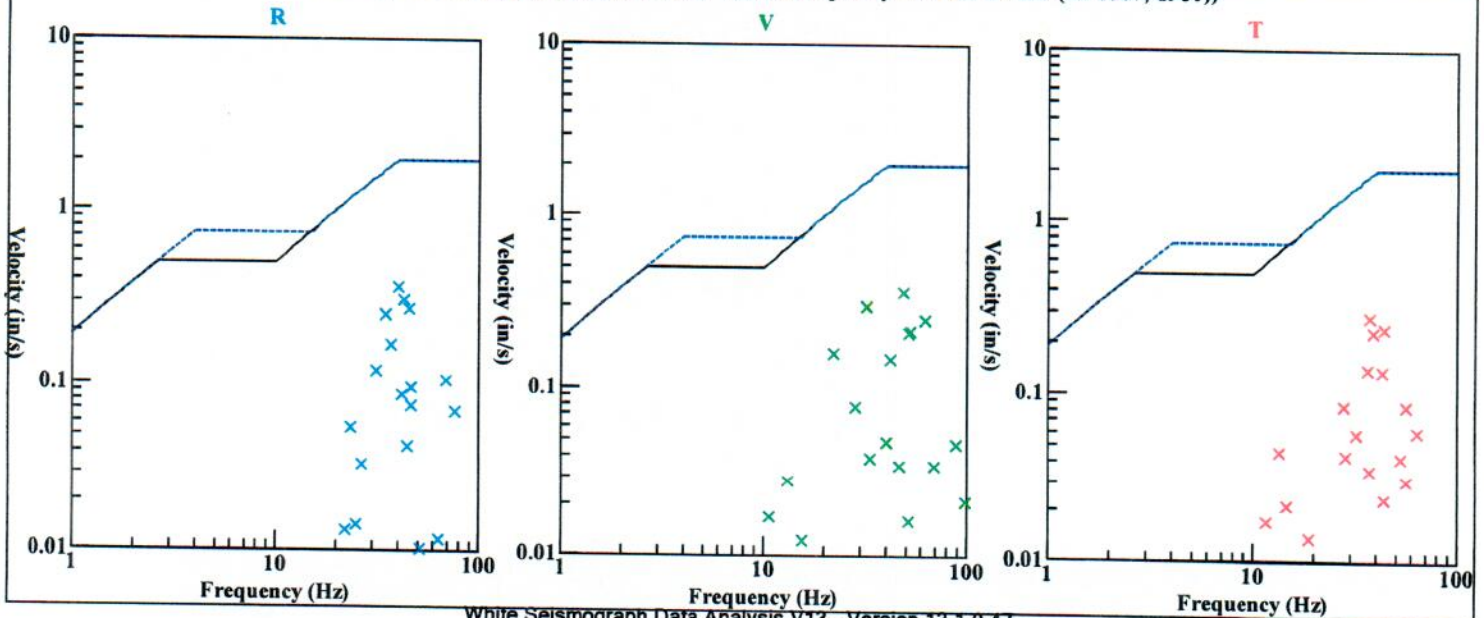
**Graph Information**

Time Range: -0.25 s to 3 s, Intervals: 0.3250 Seconds

**Waveform**



Velocity vs. Frequency (Particle Velocity Versus Frequency - USBM Limits (RI 8507, 1980))

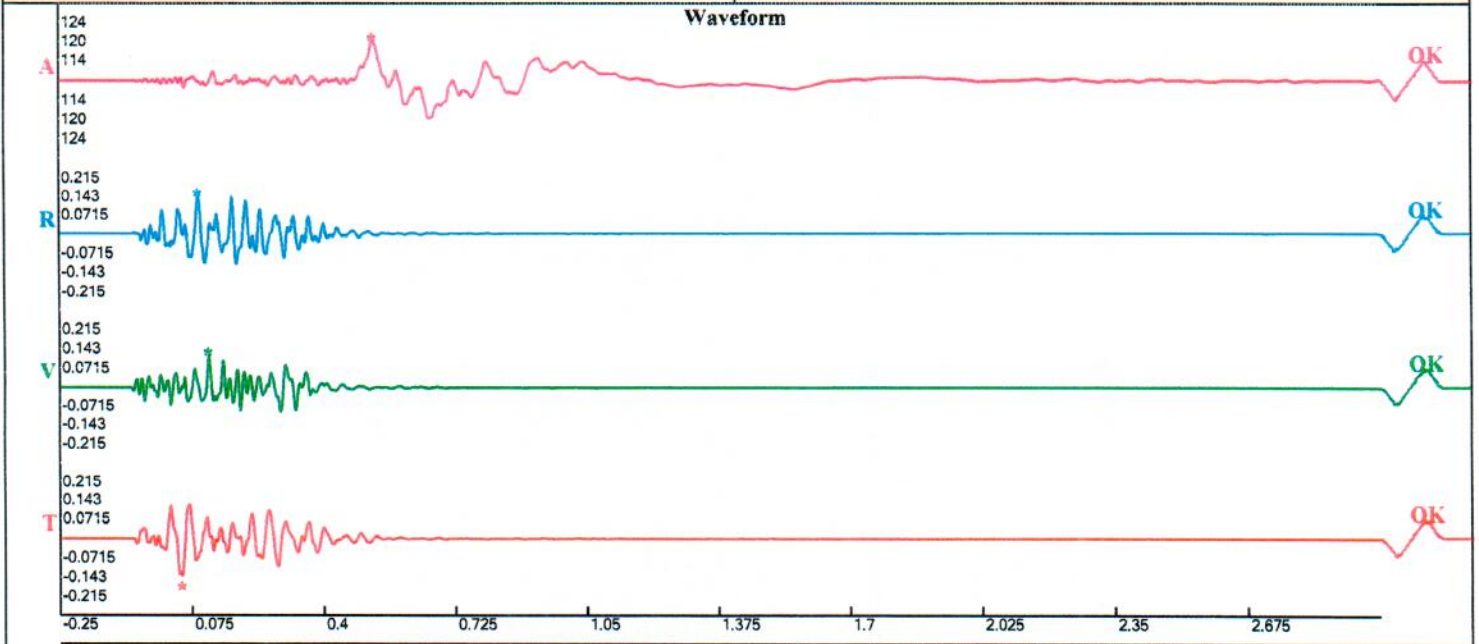


Barry Construction Site  
 ...ad St  
 ...on Lakes, New Jersey  
 ...o At:  
 ...ick Lodge

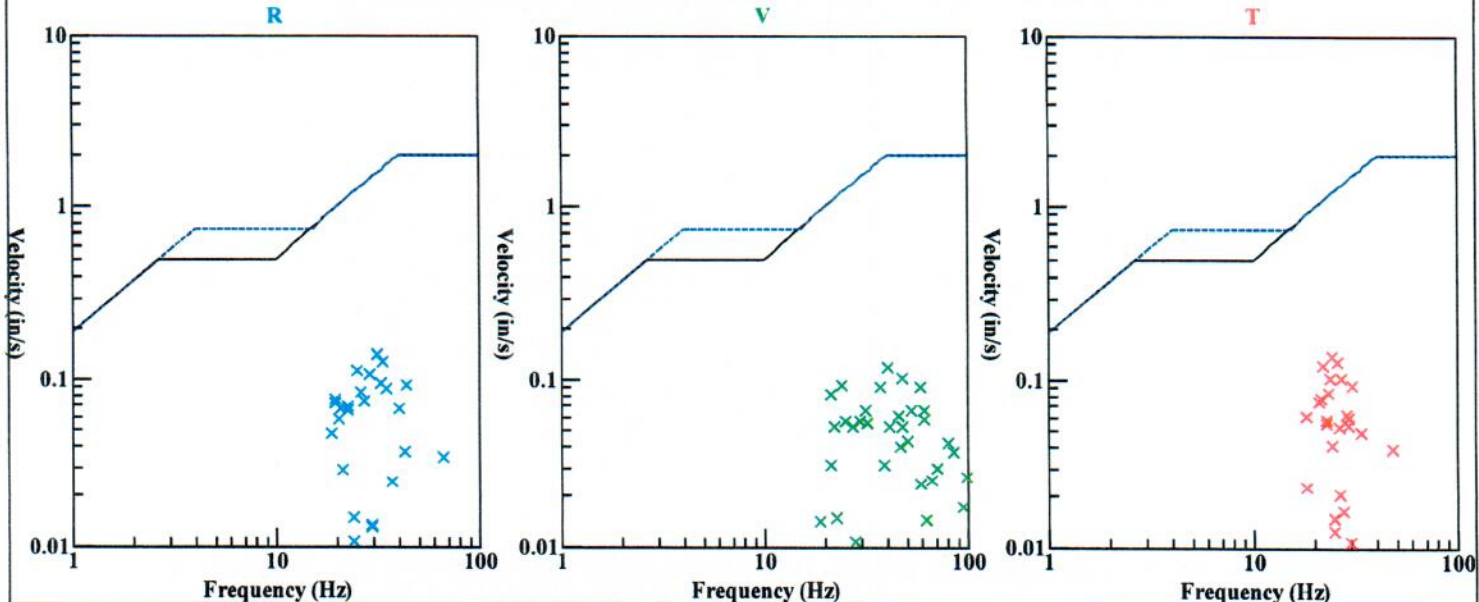
Record: 10072202302161229560191.proevt  
 Number: 191  
 Seismograph: Mini-Seis III Pro 10072  
 Type of Record: Waveform  
 Date: 2/16/2023 12:29:56 PM  
 Duration: 3.25 Seconds  
 Sample Rate: 4096  
 Pre-Trigger: 0.25 Seconds  
 Seismic Trigger: 0.065 in/s  
 Acoustic Trigger: 115.0 dB  
 Seismic Gain: 10.24  
 Acoustic Gain: 148.2 dB  
 Voltage: 6.57

**Peaks and Frequencies**  
 PPV Maximum (Geo #1): 0.143 in/s  
 Acoustic #1: 119.7 dB @ 5.5 Hz (0.5197754 s)  
 Radial #1: 0.143 in/s @ 31.0 Hz (0.09082031 s)  
 Vertical #1: 0.116 in/s @ 39.4 Hz (0.1157227 s)  
 Transverse #1: 0.138 in/s @ 23.3 Hz (0.046875 s)  
 Displacement (Geo #1): 0.00104 in  
 Acceleration (Geo #1): 0.0977 g's  
 Last Calibration Date: 5/19/2022

**Graph Information**  
 Time Range: -0.25 s to 3 s, Intervals: 0.3250 Seconds



Velocity vs. Frequency (Particle Velocity Versus Frequency - USBM Limits (RI 8507, 1980))



**Quarry Construction Site**  
**Broad St**  
**Tompton Lakes, New Jersey**  
**Seismo At:**  
**Jersick Lodge**

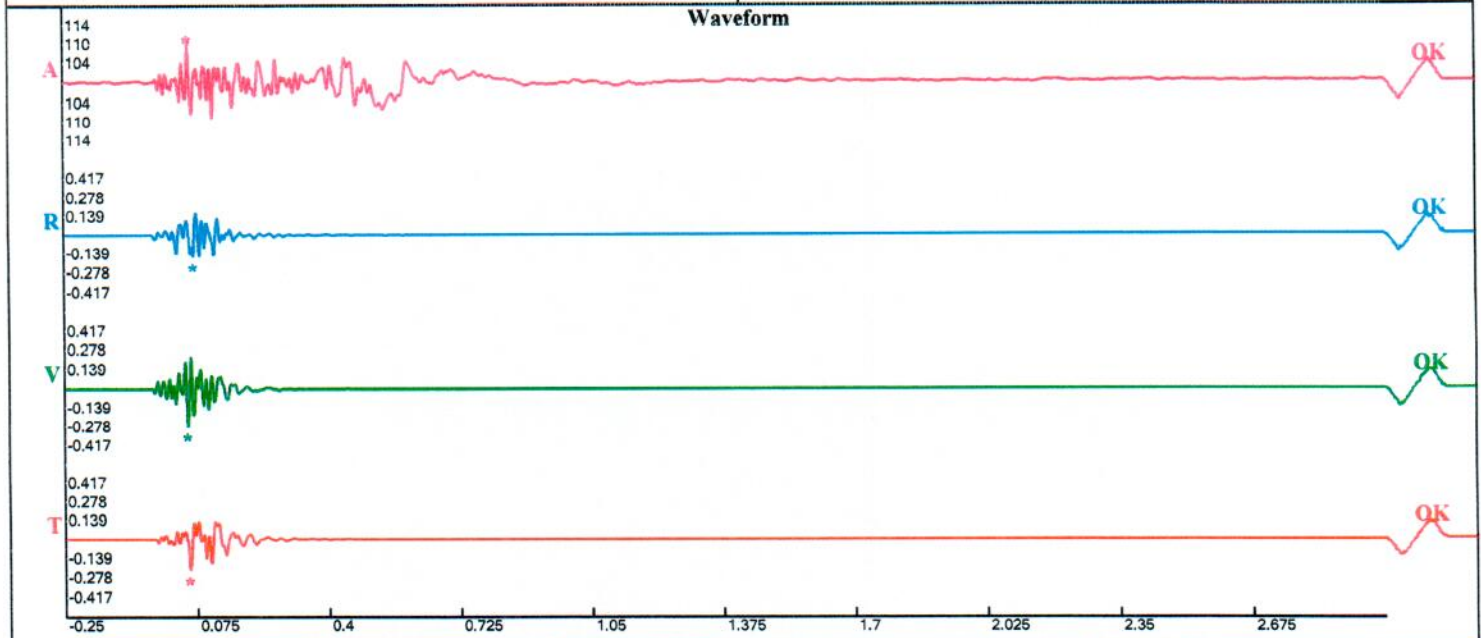
Record: 10072202302171100070192.proevt  
 Number: 192  
 Seismograph: Mini-Seis III Pro 10072  
 Type of Record: Waveform  
 Date: 2/17/2023 11:00:07 AM  
 Duration: 3.25 Seconds  
 Sample Rate: 4096  
 Pre-Trigger: 0.25 Seconds  
 Seismic Trigger: 0.065 in/s  
 Acoustic Trigger: 115.0 dB  
 Seismic Gain: 10.24  
 Acoustic Gain: 148.2 dB  
 Voltage: 6.46

**Peaks and Frequencies**

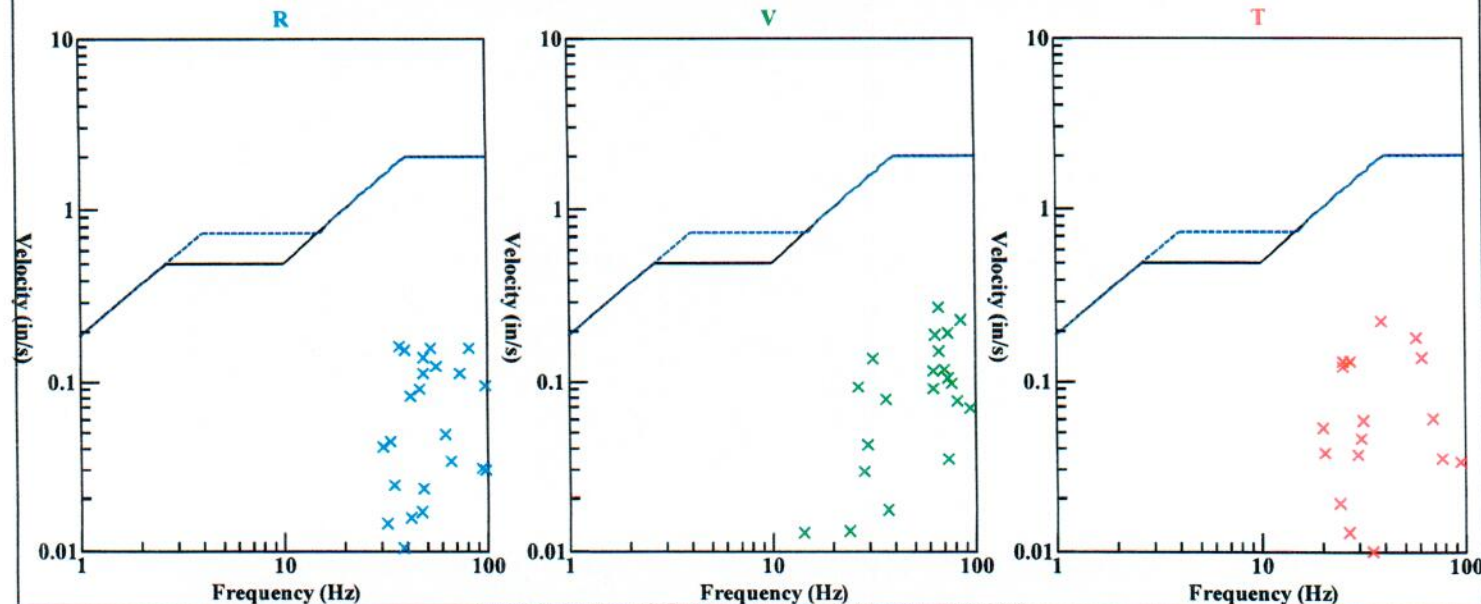
PPV Maximum (Geo #1): 0.278 in/s  
 Acoustic #1: 110.9 dB @ 68.3 Hz (0.05541992 s)  
 Radial #1: 0.164 in/s @ 35.9 Hz (0.06811523 s)  
 Vertical #1: 0.278 in/s @ 64.0 Hz (0.0534668 s)  
 Transverse #1: 0.228 in/s @ 38.6 Hz (0.05517578 s)  
 Displacement (Geo #1): 0.00111 in  
 Acceleration (Geo #1): 0.316 g's  
 Last Calibration Date: 5/19/2022

**Graph Information**

Time Range: -0.25 s to 3 s, Intervals: 0.3250 Seconds



Velocity vs. Frequency (Particle Velocity Versus Frequency - USBM Limits (RI 8507, 1980))



Harry Construction Site  
 Road St  
 Ton Lakes, New Jersey  
 No At:  
 Sick Lodge

Record: 10072202302221200070193.proevt  
 Number: 193  
 Seismograph: Mini-Seis III Pro 10072  
 Type of Record: Waveform  
 Date: 2/22/2023 12:00:07 PM  
 Duration: 3.25 Seconds  
 Sample Rate: 4096  
 Pre-Trigger: 0.25 Seconds  
 Seismic Trigger: 0.065 in/s  
 Acoustic Trigger: 115.0 dB  
 Seismic Gain: 10.24  
 Acoustic Gain: 148.2 dB  
 Voltage: 6.41

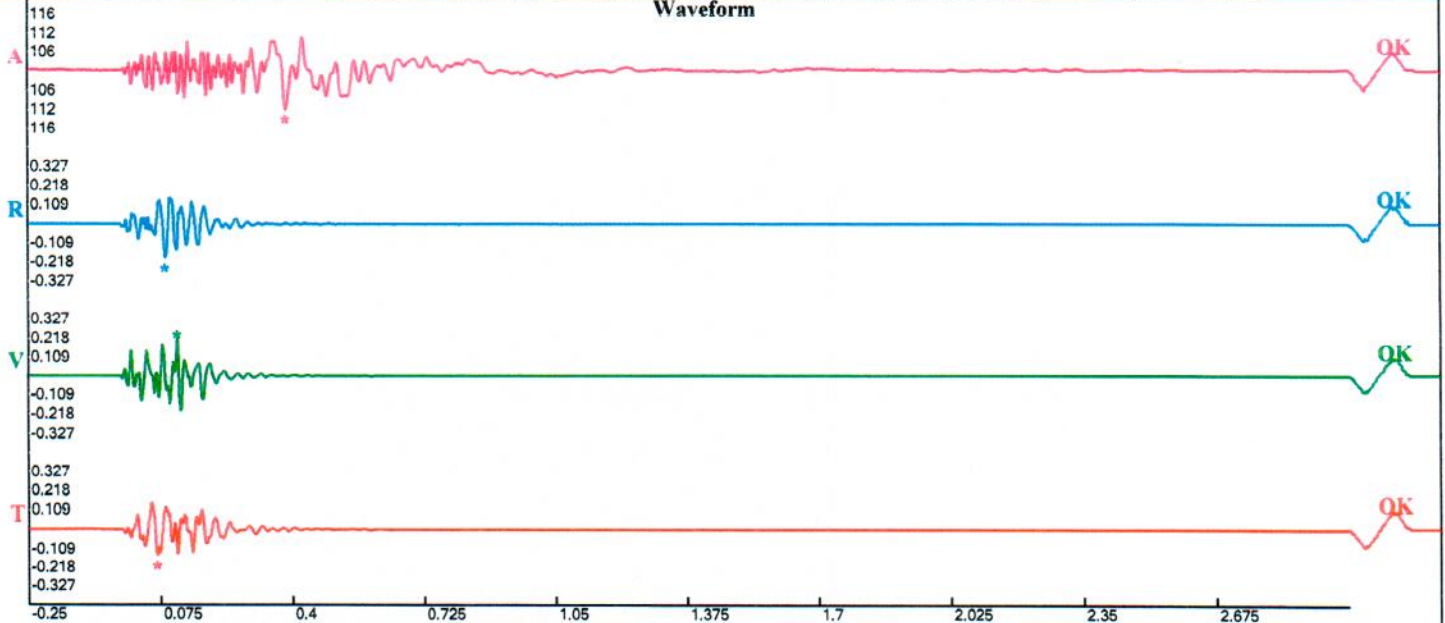
**Peaks and Frequencies**

PPV Maximum (Geo #1): 0.218 in/s  
 Acoustic #1: 112.1 dB @ 23.5 Hz (0.3847656 s)  
 Radial #1: 0.192 in/s @ 37.2 Hz (0.08764648 s)  
 Vertical #1: 0.218 in/s @ 30.6 Hz (0.1162109 s)  
 Transverse #1: 0.15 in/s @ 26.3 Hz (0.06542969 s)  
 Displacement (Geo #1): 0.00105 in  
 Acceleration (Geo #1): 0.255 g's  
 Last Calibration Date: 5/19/2022

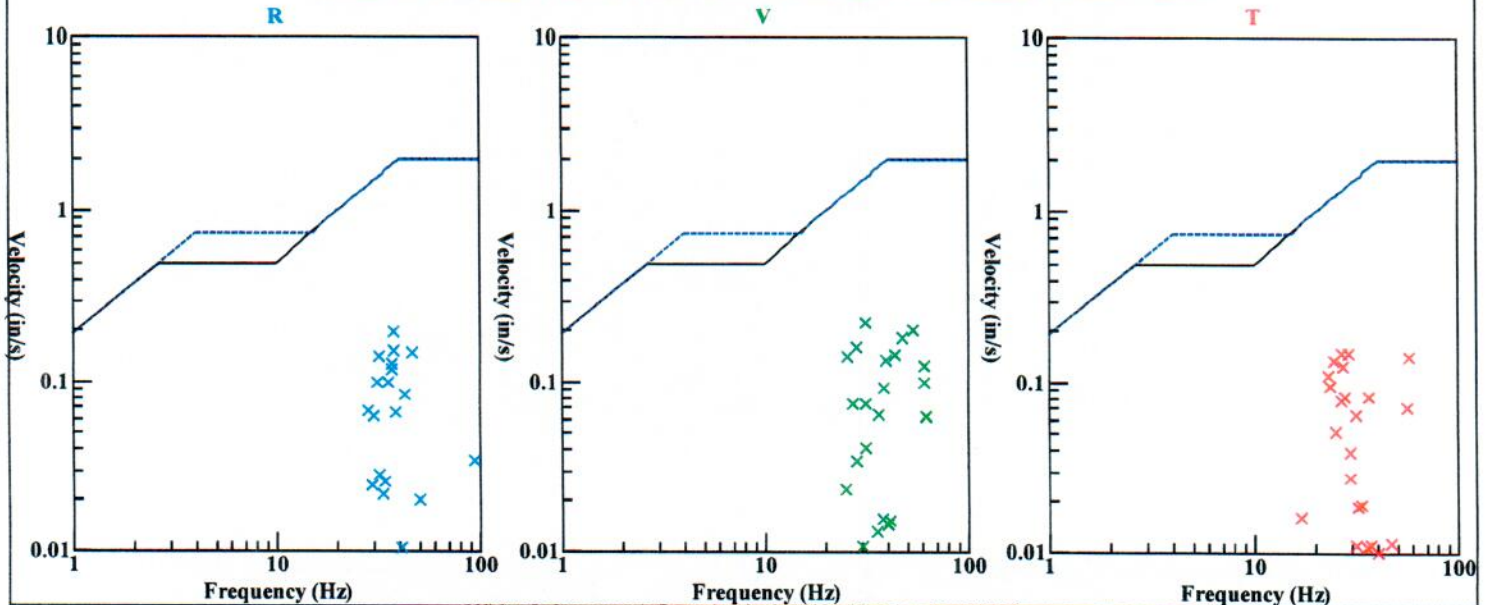
**Graph Information**

Time Range: -0.25 s to 3 s, Intervals: 0.3250 Seconds

**Waveform**



Velocity vs. Frequency (Particle Velocity Versus Frequency - USBM Limits (RI 8507, 1980))



Quarry Construction Site  
 Road St  
 Ton Lakes, New Jersey  
 mo At:  
 sick Lodge

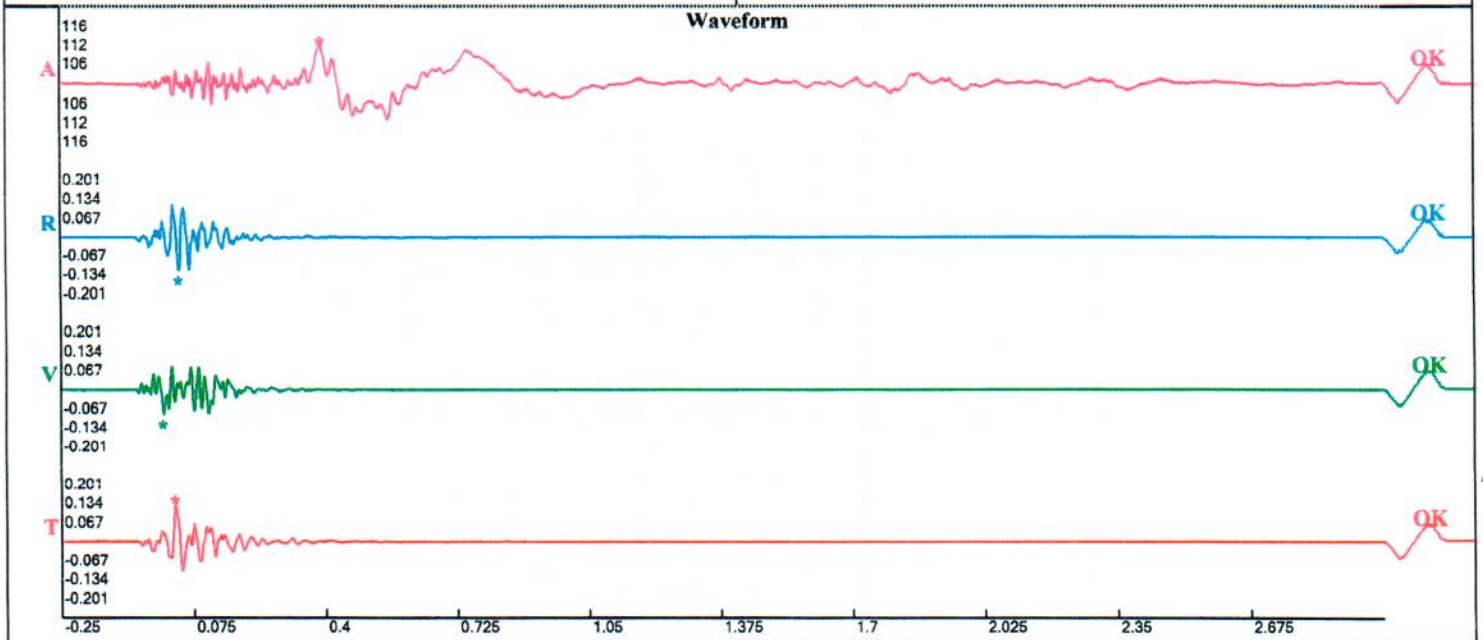
Record: 10072202302241115310195.procv  
 Number: 195  
 Seismograph: Mini-Seis III Pro 10072  
 Type of Record: Waveform  
 Date: 2/24/2023 11:15:31 AM  
 Duration: 3.25 Seconds  
 Sample Rate: 4096  
 Pre-Trigger: 0.25 Seconds  
 Seismic Trigger: 0.065 in/s  
 Acoustic Gain: 10.24  
 Acoustic Gain: 148.2 dB  
 Voltage: 6.51

**Peaks and Frequencies**

PPV Maximum (Geo #1): 0.134 in/s  
 Acoustic #1: 112.7 dB @ 5.2 Hz (0.3886719 s)  
 Radial #1: 0.118 in/s @ 44.5 Hz (0.03955078 s)  
 Vertical #1: 0.0863 in/s @ 21.1 Hz (0.001464844 s)  
 Transverse #1: 0.134 in/s @ 29.7 Hz (0.02758789 s)  
 Displacement (Geo #1): 0.000711 in  
 Acceleration (Geo #1): 0.113 g's  
 Last Calibration Date: 5/19/2022

**Graph Information**

Time Range: -0.25 s to 3 s, Intervals: 0.3250 Seconds



Velocity vs. Frequency (Particle Velocity Versus Frequency - USBM Limits (RI 8507, 1980))

