



A CRH COMPANY

FAX COVER SHEET

TILCON NEW YORK INC.
9 Entin Road
Parsippany, NJ 07054

TO: Ms. Iris Heredia

FROM: Daniel Naiman – Pompton Lakes Assistant Plant Manager

SUBJECT: Monthly Explosives Use Report

TELEPHONE: (973) 294-9299

DATE: 2/6/2023

TOTAL PAGES: 15 (Including Cover)

MESSAGE: Monthly explosives use report for Pompton Lakes Quarry

Month of January 2023

Monthly Explosives Use Report

NOTE: COMPLETE ALL APPLICABLE ENTRIES ON FRONT AND REVERSE SIDES OF THIS FORM. THE COMPLETED FORM IS TO BE MAILED TO THE OFFICE OF SAFETY COMPLIANCE WITHIN 10 DAYS AFTER THE END OF THE MONTH FOR WHICH THE REPORT IS DUE.

Name	<u>Tilcon - Pompton Lakes Facility</u>	Phone No.	<u>(973) 835-0028</u>
Street Address	<u>Foot of Broad Street</u>	City	<u>Pompton Lakes</u>
State	<u>NJ</u>	Zip	<u>07442</u>

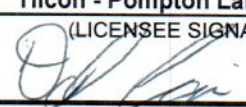
MONTH AND YEAR OF REPORT January 2023	Explosives Lbs.	Detonator (Caps) No.	Gunpowder (Primer)	Other
Beginning Actual Count Inventory First of Month	-	-	-	
Purchases During the Month	58,545	958	92	
Total (Item 1 plus Item 2)	58,545	958	92	
Blasting Summary	58,545	958	92	
Miscellaneous Adjustments	-	-	-	
Month Ending Inventory on Hand by actual Count	-	-	-	

Name of Supplier :	DATE	INV. #	Explosives Lbs.	Detonator (Caps) No.	Gunpowder (Primer)	Other
Maine D&B	1/5/2023	141010	4,208	85	-	
Maurer & Scott	1/6/2023	70435	7,600	166	-	
Maurer & Scott	1/6/2023	70424	9,240	173	-	
Maine D&B	1/10/2023	141174	2,453	56	-	
Explosives Supply	1/12/2023	20858	7,165	97	92	
Maine D&B	1/12/2023	141286	7,516	85	-	
Maine D&B	1/18/2023	141529	6,154	73	-	
Maine D&B	1/20/2023	141650	596	41	-	
Maine D&B	1/24/2023	141723	6,796	73	-	
Maine D&B	1/26/2023	141838	493	36	-	

TOTAL NUMBER OF BLASTS - 11

Comments: blasts continued on next page

MAIL TO OFFICE OF PUBLIC SAFETY COMPLIANCE, PO BOX 386, TRENTON, NEW JERSEY 08625-0386
 PHONE: (609) 292-2096 FAX: (609) 777-4589

Tilcon - Pompton Lakes Facility
 (LICENSEE SIGNATURE)


EXPLOSIVES USED IN BLASTING

Shots	Date	Time	SITE LOCATION	Name of Blaster	Permit #	High Explo. Lbs.	Caps or Det.	Primer	Max. Lbs. Per Delay	Nearest Structure (Feet)	Seismic and Frequency			Seismic D B Level	Type of Shot (Bank, Trench, Etc.)
											Trans.	Vert.	Long.		
SHOT	1/5	1:30PM	Tilcon Pompton Lakes	John Currier	10259	4,208	85	-	316	395	PPV: 0.117	0.143	0.100	123.3	Mass
45ER-23											HZ: 29.3	36.6	30.6		
SHOT	1/6	12:00PM	Tilcon Pompton Lakes	Kyle Boyer	6191	7,600	166	-	102	2,057	PPV: 0.030	0.035	0.040	106.0	Mass
33M-22											HZ: 22.7	45.5	20.8		
SHOT	1/6	12:00PM	Tilcon Pompton Lakes	Kyle Boyer	6191	9,240	173	-	102	1,959	PPV: 0.030	0.035	0.040	106.0	Mass
32M-22											HZ: 22.7	45.5	20.8		
SHOT	1/10	12:30PM	Tilcon Pompton Lakes	John Currier	10259	2,543	56	-	182	424	PPV: 0.091	0.159	0.131	122.4	Mass
46ER-23											HZ: 31	46.5	34.1		
SHOT	1/12	12:30 PM	Tilcon Pompton Lakes	Kenneth H Morris	6141	7,165	97	92	175	1,248	PPV: 0.085	0.100	0.140	118.6	Mass
21D-22											HZ: 37	43	23		
SHOT	1/12	1:00PM	Tilcon Pompton Lakes	John Currier	10259	7,516	85	-	358	459	PPV: 0.191	0.178	0.137	126.6	Mass
47ER-23											HZ: 25	29.3	30.1		
SHOT	1/18	1:00PM	Tilcon Pompton Lakes	John Currier	10259	6,154	73	-	342	471	PPV: 0.192	0.205	0.210	125.4	Mass
48ER-23											HZ: 26.3	50	30.6		
SHOT	1/20	12:00PM	Tilcon Pompton Lakes	John Currier	10259	596	41	-	60	548	PPV: 0.068	0.189	0.087	112.5	Pre-split
49ER-23											HZ: 26.6	47.6	58.5		
SHOT	1/24	2:00PM	Tilcon Pompton Lakes	John Currier	10259	6,796	73	-	378	496	PPV: 0.232	0.242	0.178	126.5	Mass
50ER-23											HZ: 30.6	32.5	38.6		
SHOT	1/26	11:30PM	Tilcon Pompton Lakes	John Currier	10259	493	36	-	62	545	PPV: 0.114	0.159	0.118	109.3	Pre-split
51ER-23											HZ: 33	50	50		
SHOT	1/30	12:30PM	Tilcon Pompton Lakes	John Currier	10259	6,234	73	-	520	515	PPV: 0.236	0.204	0.213	125.5	Mass
52ER-23											HZ: 28.1	47.6	30.6		
SHOT											PPV:				
											HZ:				
SHOT											PPV:				
											HZ:				
SHOT											PPV:				
											HZ:				
SHOT											PPV:				
											HZ:				
TOTALS						58,545	958	92							

ection Site
New Jersey
ge

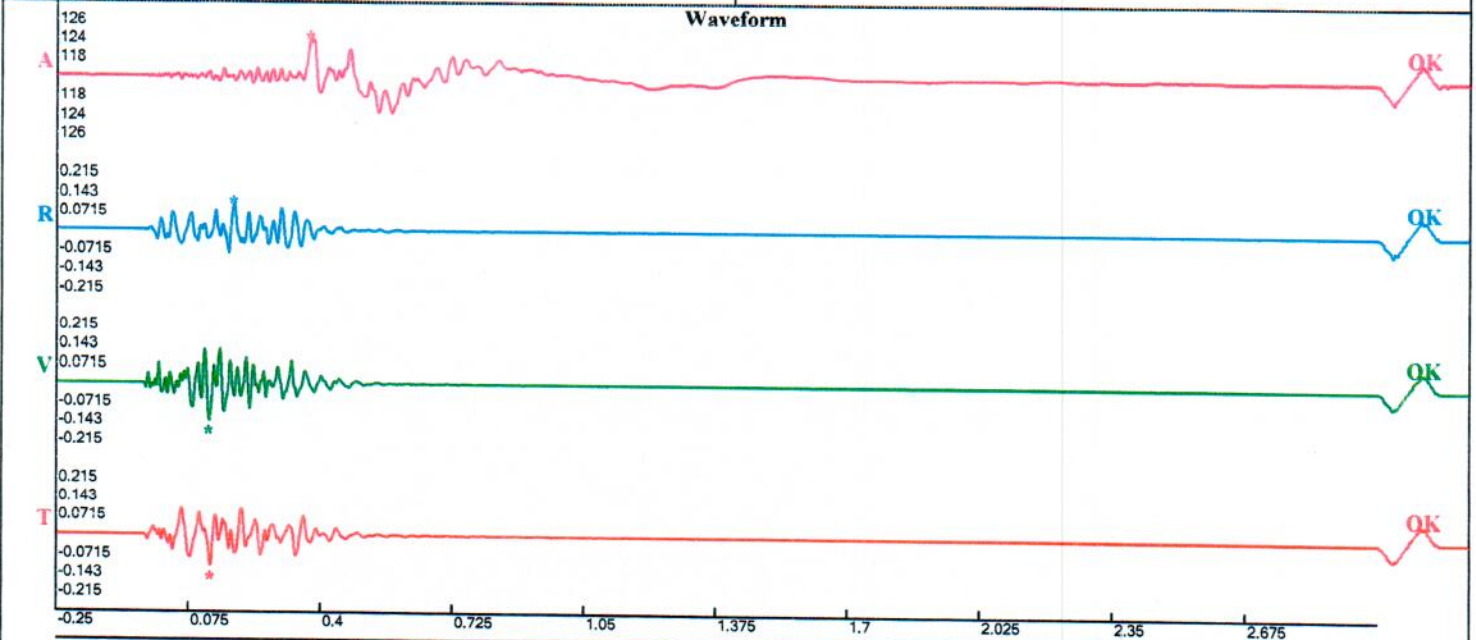
Record: 10072202301051332220174.proevt
Number: 174
Seismograph: Mini-Seis III Pro 10072
Type of Record: Waveform
Date: 1/5/2023 1:32:22 PM
Duration: 3.25 Seconds
Sample Rate: 4096
Pre-Trigger: 0.25 Seconds
Seismic Trigger: 0.065 in/s
Acoustic Trigger: 115.0 dB
Seismic Gain: 10.24
Acoustic Gain: 148.2 dB
Voltage: 6.39

Peaks and Frequencies

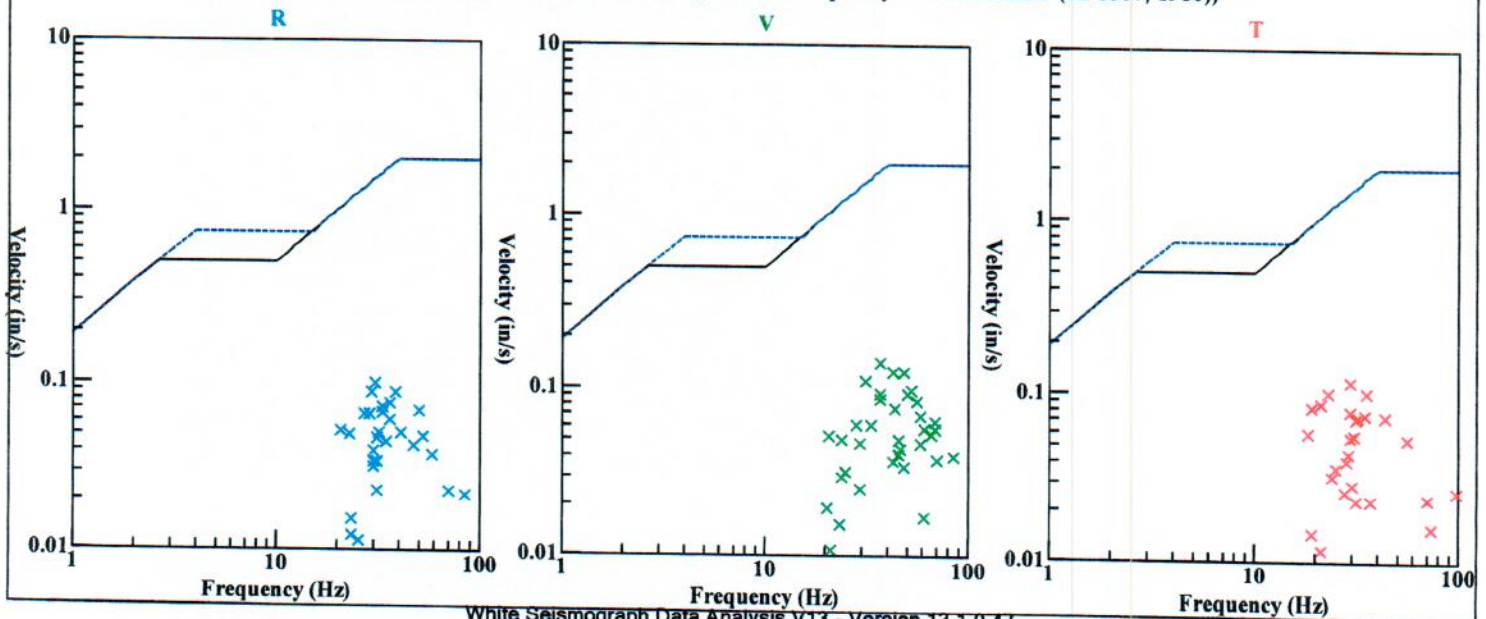
PPV Maximum (Geo #1): 0.143 in/s
Acoustic #1: 123.3 dB @ 15.9 Hz (0.3737793 s)
Radial #1: 0.1 in/s @ 30.6 Hz (0.1862793 s)
Vertical #1: 0.143 in/s @ 36.6 Hz (0.1257324 s)
Transverse #1: 0.117 in/s @ 29.3 Hz (0.1279297 s)
Displacement (Geo #1): 0.000717 in
Acceleration (Geo #1): 0.106 g's
Last Calibration Date: 5/19/2022

Graph Information

Time Range: -0.25 s to 3 s, Intervals: 0.3250 Seconds



Velocity vs. Frequency (Particle Velocity Versus Frequency - USBM Limits (RI 8507, 1980))



GeoSonics Inc. Seismic Analysis

Velocity Waveform Analysis

Serial No: 5720 v3.85
Date: 01/06/2023 11:59:39
Event No: 80
Record Time: 5.0 s
Client: Tilcon
Operation: Pompton Lakes NJ
Location: 120 Federal Hill
Distance: 2057
Operator: B Necker
Comment: Maurer & Scott
Seismic Trigger: 0.030 in/s
Sound Trigger: 120 db

	Summary Data		
	L	T	V
PPV (in/s)	0.040	0.030	0.035
FREQ (Hz)	20.8	22.7	45.5
PD (.001")	0.30	0.22	0.20
PPA (g)	0.020	0.039	0.026
Peak Vector Sum :	0.045 in/s		
Peak Air Pressure:	106 db		
	0.00061 PSI @ 3.8 Hz		

Additional Info:

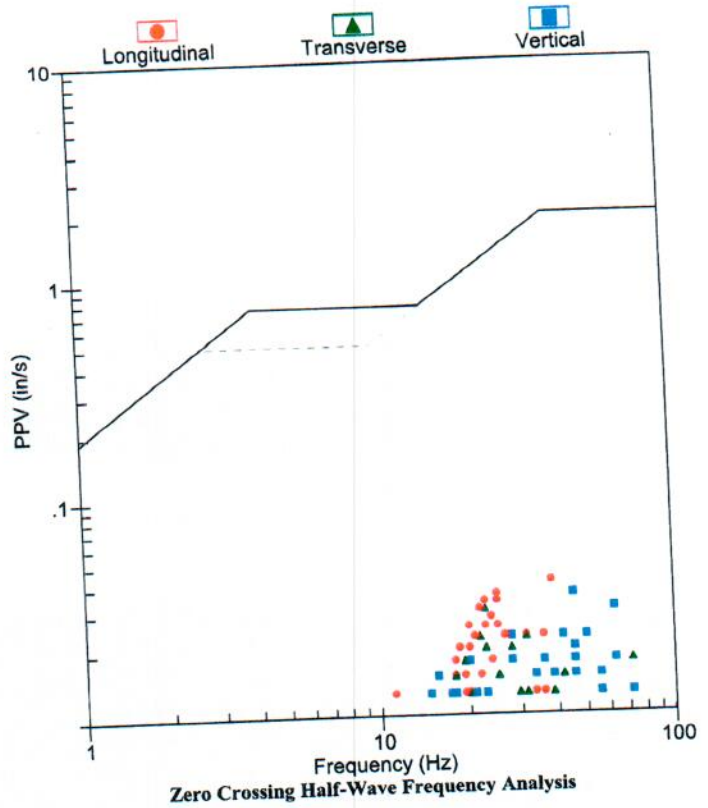
Shaketable Calibrated: 02/08/2022
By: GeoSonics Inc.
 359 Northgate Drive
 Warrendale, PA 15086 U.S.A.
 TEL: 724.934.2900 FAX: 724.934.2999

Velocity Waveform Graph Scale

Time Scale: 0.100 s
Seismic Scale: +/- 0.160 in/s
Sound Scale: +/- 0.0023 PSI

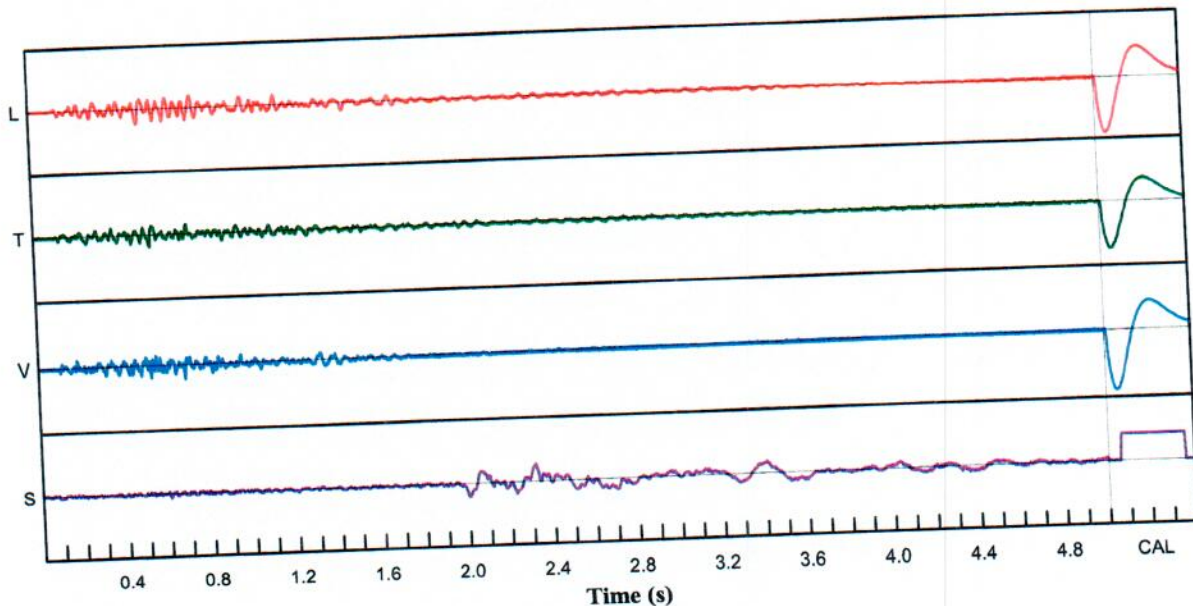
USBM Safe Blasting Levels

SN: 5720 Event: 80



Velocity Waveform

SN: 5720 Event: 80



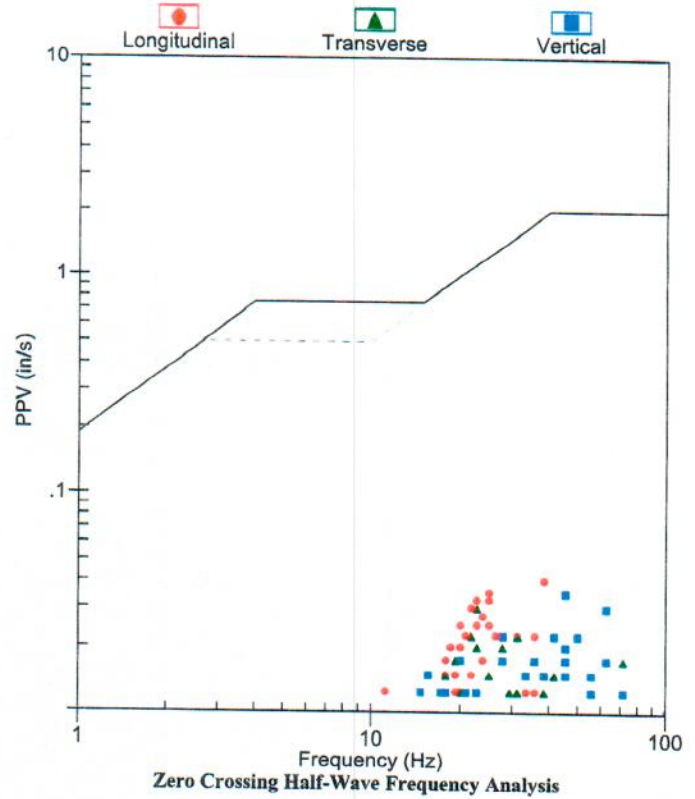
GeoSonics Inc. Seismic Analysis

Velocity Waveform Analysis

Serial No: 5720 v3.85
Date: 01/06/2023 11:59:39
Event No: 80
Record Time: 5.0 s
Client: Tilcon
Operation: Pompton Lakes NJ
Location: 120 Federal Hill
Distance: 1958
Operator: B Necker
Comment: Maurer & Scott
Seismic Trigger: 0.030 in/s
Sound Trigger: 120 db

USBM Safe Blasting Levels

SN: 5720 Event: 80



Summary Data

	L	T	V
PPV (in/s)	0.040	0.030	0.035
FREQ (Hz)	20.8	22.7	45.5
PD (.001")	0.30	0.22	0.20
PPA (g)	0.020	0.039	0.026
Peak Vector Sum :	0.045 in/s		
Peak Air Pressure:	106 db		
	0.00061 PSI @ 3.8 Hz		

Additional Info:

Shaketable Calibrated: 02/08/2022

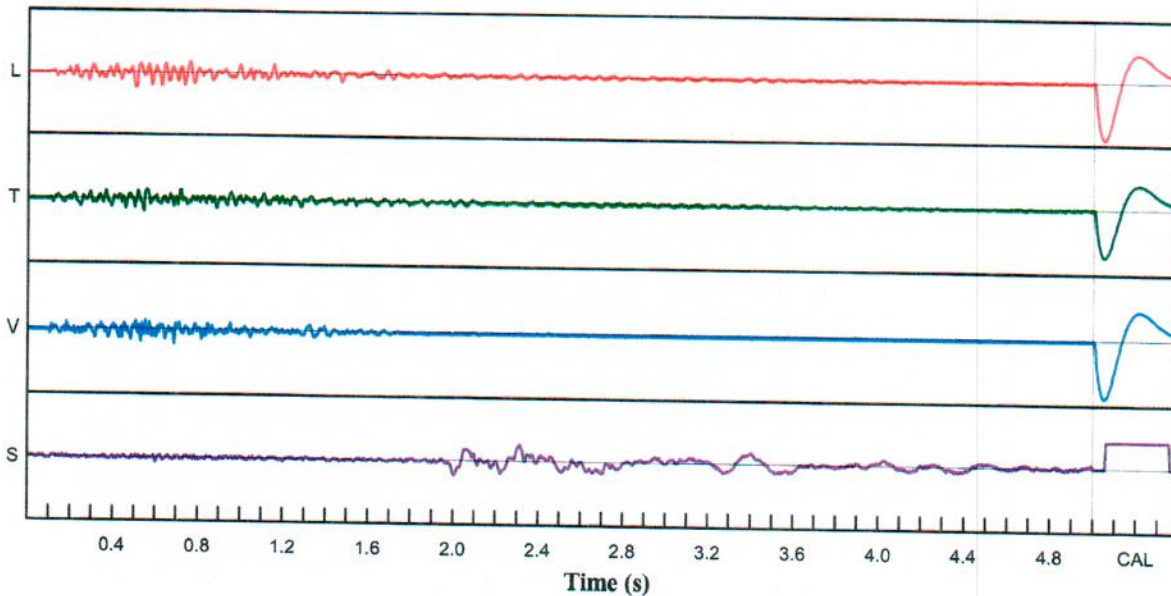
By: GeoSonics Inc.
 359 Northgate Drive
 Warrendale, PA 15086 U.S.A.
 TEL: 724.934.2900 FAX: 724.934.2999

Velocity Waveform Graph Scale

Time Scale: 0.100 s
Seismic Scale: +/- 0.160 in/s
Sound Scale: +/- 0.0023 PSI

Velocity Waveform

SN: 5720 Event: 80



Construction Site

Record: 10072202301101202180175.proevt

akes, New Jersey

Number: 175

Seismograph: Mini-Seis III Pro 10072

Type of Record: Waveform

Date: 1/10/2023 12:02:18 PM

Duration: 3.25 Seconds

Sample Rate: 4096

Pre-Trigger: 0.25 Seconds

Seismic Trigger: 0.065 in/s

Acoustic Trigger: 115.0 dB

Seismic Gain: 10.24

Acoustic Gain: 148.2 dB

Voltage: 6.39

Peaks and Frequencies

PPV Maximum (Geo #1): 0.159 in/s

Acoustic #1: 122.4 dB @ 15.6 Hz (0.607666 s)

Radial #1: 0.131 in/s @ 34.1 Hz (0.1081543 s)

Vertical #1: 0.159 in/s @ 46.5 Hz (0.1337891 s)

Transverse #1: 0.0913 in/s @ 31.0 Hz (0.2351074 s)

Displacement (Geo #1): 0.000651 in

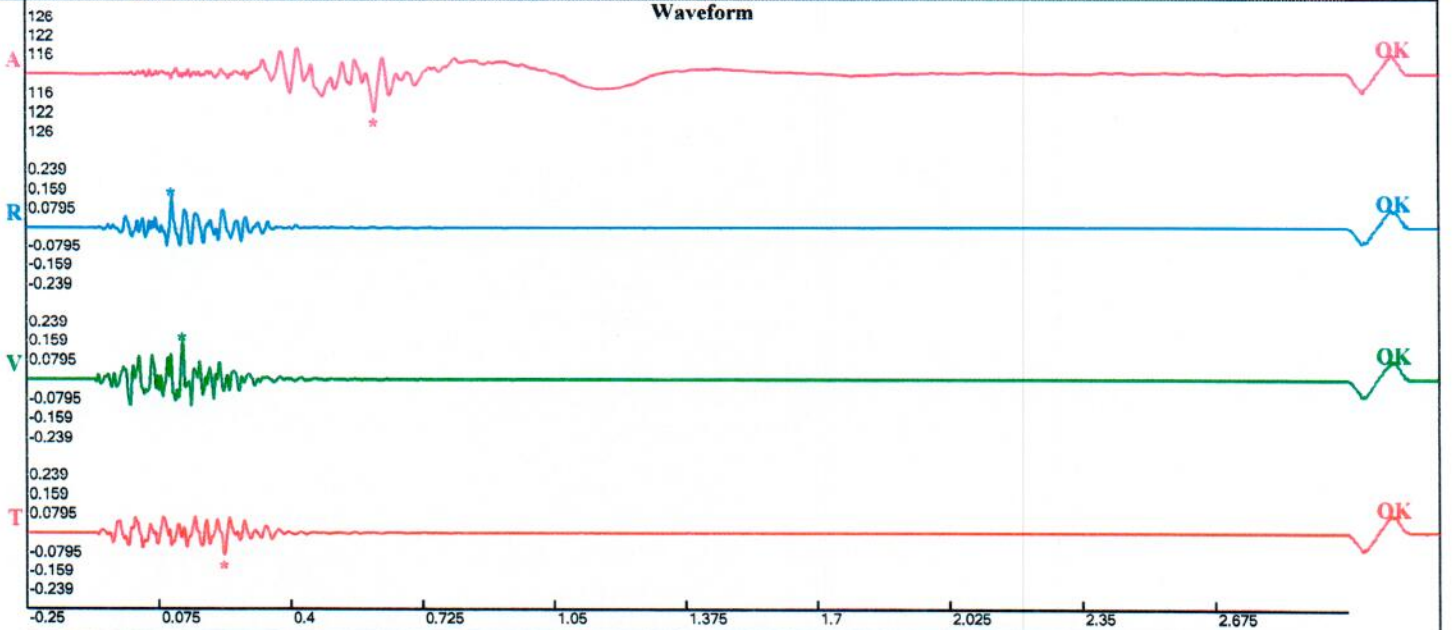
Acceleration (Geo #1): 0.124 g's

Last Calibration Date: 5/19/2022

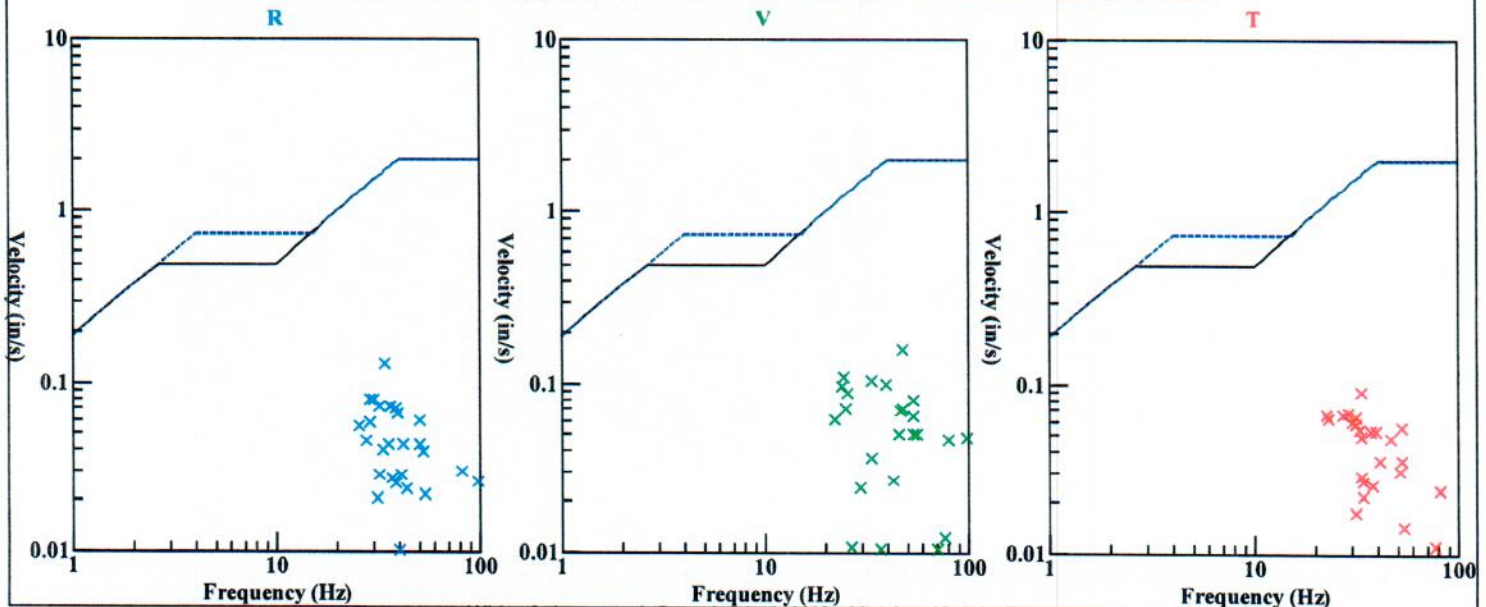
Graph Information

Time Range: -0.25 s to 3 s, Intervals: 0.3250 Seconds

Waveform



Velocity vs. Frequency (Particle Velocity Versus Frequency - USBM Limits (RI 8507, 1980))



30J3

Time Vert at 12:30:09 PM January 12, 2023
 Trigger Source Geo: 0.050 in/s, Mic: 120.0 dB(L)
 Range Geo: 10.000 in/s
 Record Time 3.75 sec (Auto=3Sec) at 1024 sps
 Job Number: 1

Serial Number BA7076 V 10.72-8.17 BlastMate III
 Battery Level 6.3 Volts
 Unit Calibration August 29, 2022 by InstanTel
 File Name I076JUJ6.Q90

Notes

Location: 120 Willard Pompton Lakes
 Client: Ticon Pompton lakes
 User Name: Ken Morris
 General: 1248ft East

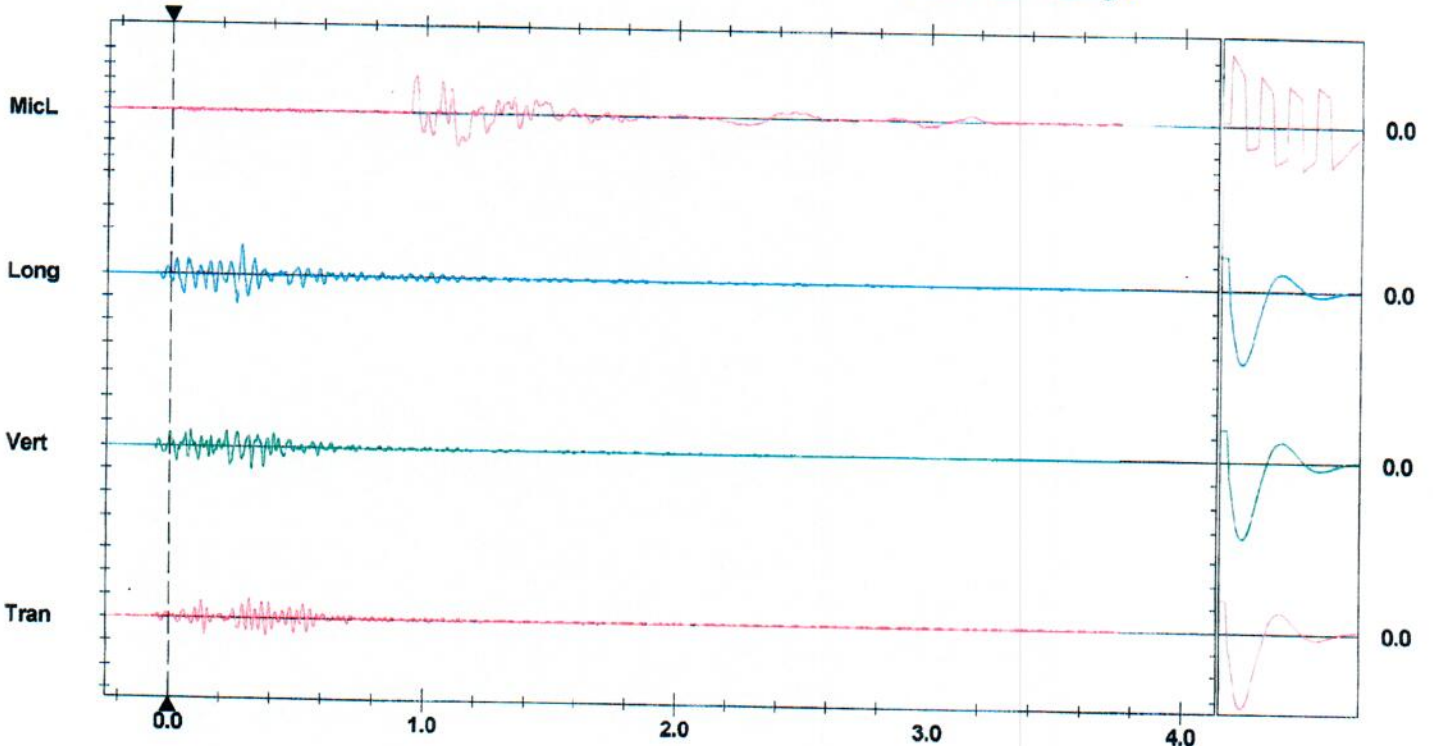
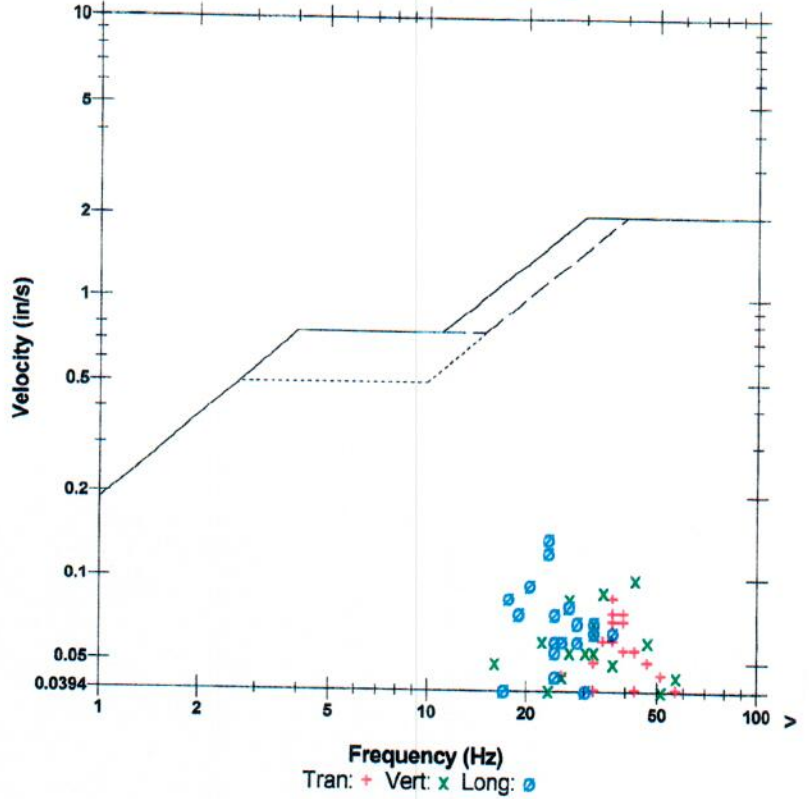
Extended Notes

Microphone Linear Weighting
 PSPL 118.6 dB(L) at 0.959 sec
 ZC Freq 14 Hz
 Channel Test Passed (Freq = 20.1 Hz Amp = 618 mv)

	Tran	Vert	Long	
PPV	0.085	0.100	0.140	in/s
ZC Freq	37	43	23	Hz
Time (Rel. to Trig)	0.317	0.322	0.283	sec
Peak Acceleration	0.053	0.066	0.053	g
Peak Displacement	0.000	0.000	0.001	in
Sensor Check	Passed	Passed	Passed	
Frequency	7.5	7.4	7.4	Hz
Overswing Ratio	3.6	3.5	4.1	

Peak Vector Sum 0.149 in/s at 0.283 sec

USBM RI8507 And OSMRE



Time Scale: 0.20 sec/div Amplitude Scale: Geo: 0.100 in/s/div Mic: 0.001 psi(L)/div
 Trigger = \blacktriangleleft

Sensor Check

Quarry Construction Site
 Broad St
 Hampton Lakes, New Jersey
 Seismo At:
 Jersick Lodge

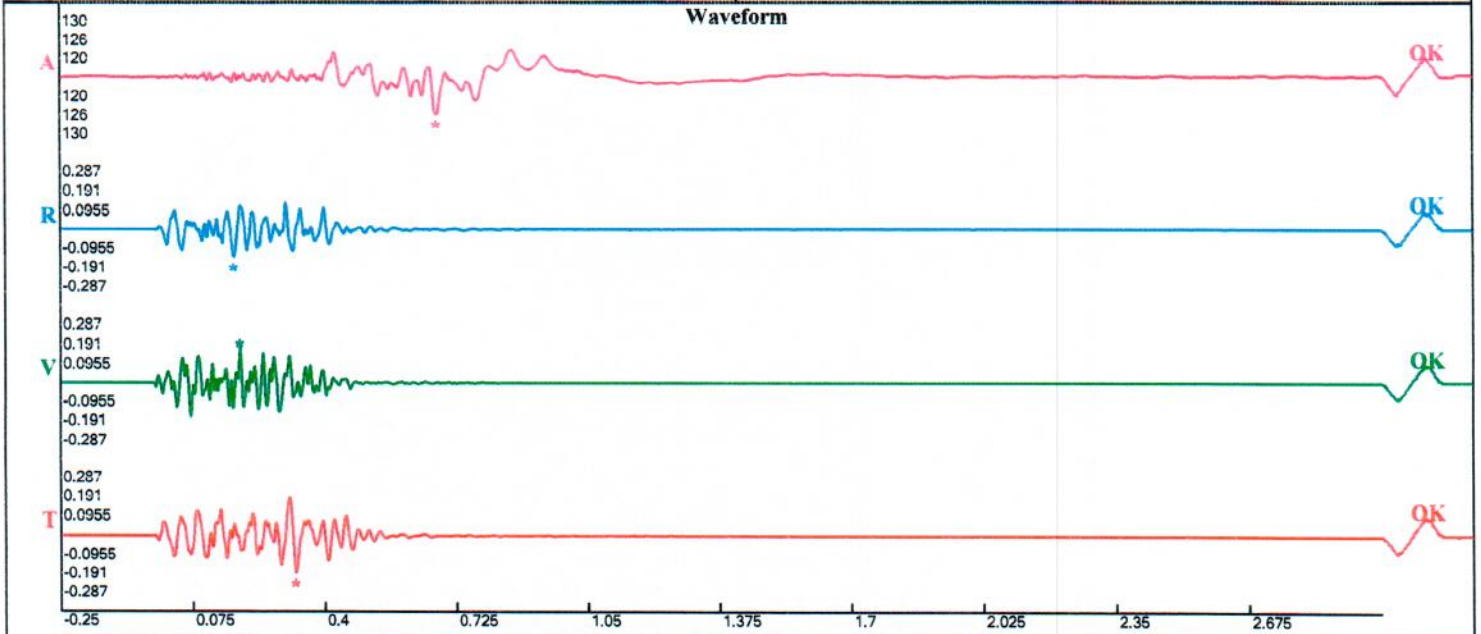
Record: 10072202301121302250176.proevt
 Number: 176
 Seismograph: Mini-Seis III Pro 10072
 Type of Record: Waveform
 Date: 1/12/2023 1:02:25 PM
 Duration: 3.25 Seconds
 Sample Rate: 4096
 Pre-Trigger: 0.25 Seconds
 Seismic Trigger: 0.065 in/s
 Acoustic Trigger: 115.0 dB
 Seismic Gain: 10.24
 Acoustic Gain: 148.2 dB
 Voltage: 6.37

Peaks and Frequencies

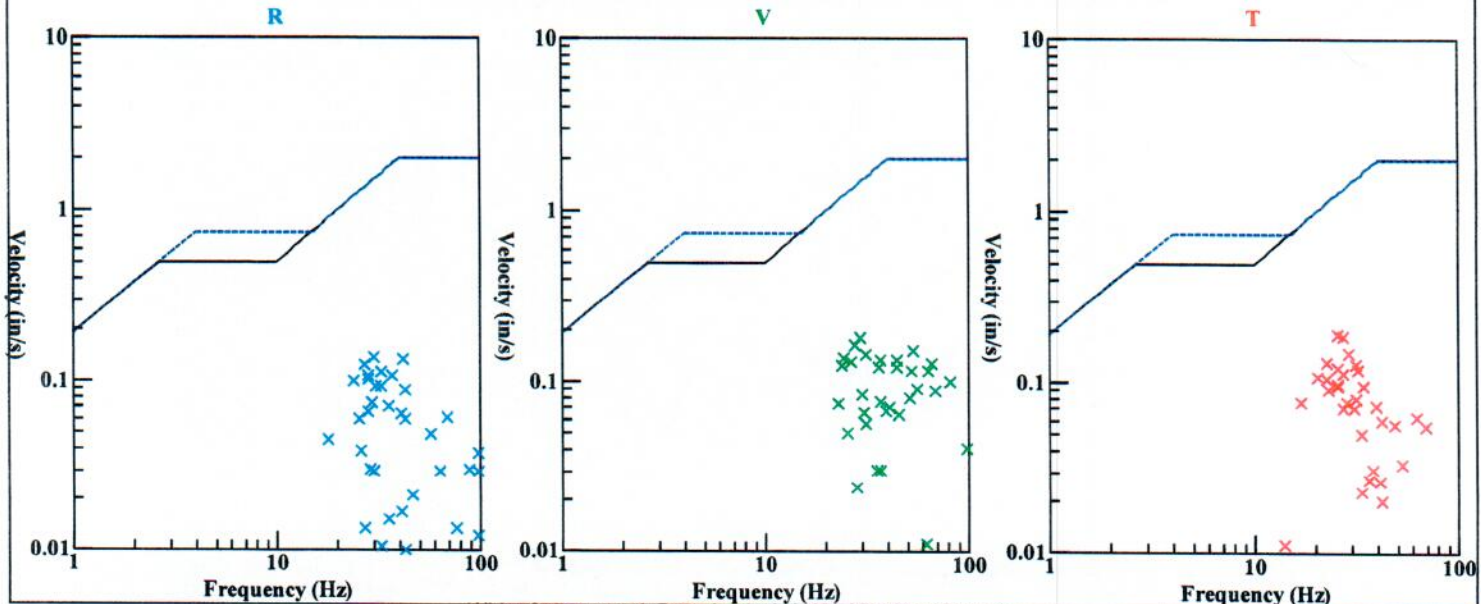
PPV Maximum (Geo #1): 0.191 in/s
 Acoustic #1: 126.6 dB @ 16.3 Hz (0.6765137 s)
 Radial #1: 0.137 in/s @ 30.1 Hz (0.1765137 s)
 Vertical #1: 0.178 in/s @ 29.3 Hz (0.1921387 s)
 Transverse #1: 0.191 in/s @ 25.0 Hz (0.3271484 s)
 Displacement (Geo #1): 0.0011 in
 Acceleration (Geo #1): 0.144 g's
 Last Calibration Date: 5/19/2022

Graph Information

Time Range: -0.25 s to 3 s, Intervals: 0.3250 Seconds



Velocity vs. Frequency (Particle Velocity Versus Frequency - USBM Limits (RI 8507, 1980))



Quarry Construction Site
 Broad St
 Hampton Lakes, New Jersey
 Seismo At:
 Jersick Lodge

Record: 10072202301181302280178.proevt
 Number: 178
 Seismograph: Mini-Seis III Pro 10072
 Type of Record: Waveform
 Date: 1/18/2023 1:02:28 PM
 Duration: 3.25 Seconds
 Sample Rate: 4096
 Pre-Trigger: 0.25 Seconds
 Seismic Trigger: 0.065 in/s
 Acoustic Trigger: 115.0 dB
 Seismic Gain: 10.24
 Acoustic Gain: 148.2 dB
 Voltage: 6.35

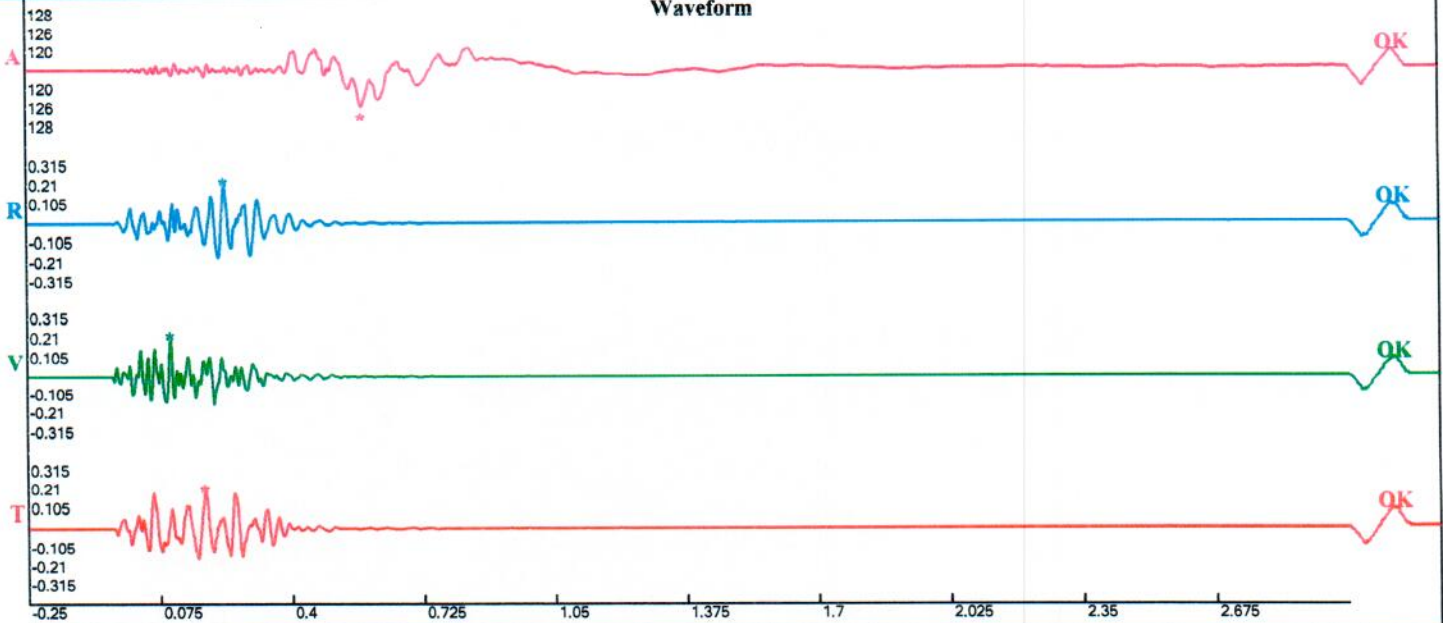
Peaks and Frequencies

PPV Maximum (Geo #1): 0.21 in/s
 Acoustic #1: 125.4 dB @ 4.2 Hz (0.5759277 s)
 Radial #1: 0.21 in/s @ 30.6 Hz (0.2355957 s)
 Vertical #1: 0.205 in/s @ 50.0 Hz (0.1018066 s)
 Transverse #1: 0.192 in/s @ 26.3 Hz (0.1845703 s)
 Displacement (Geo #1): 0.00141 in
 Acceleration (Geo #1): 0.169 g's
 Last Calibration Date: 5/19/2022

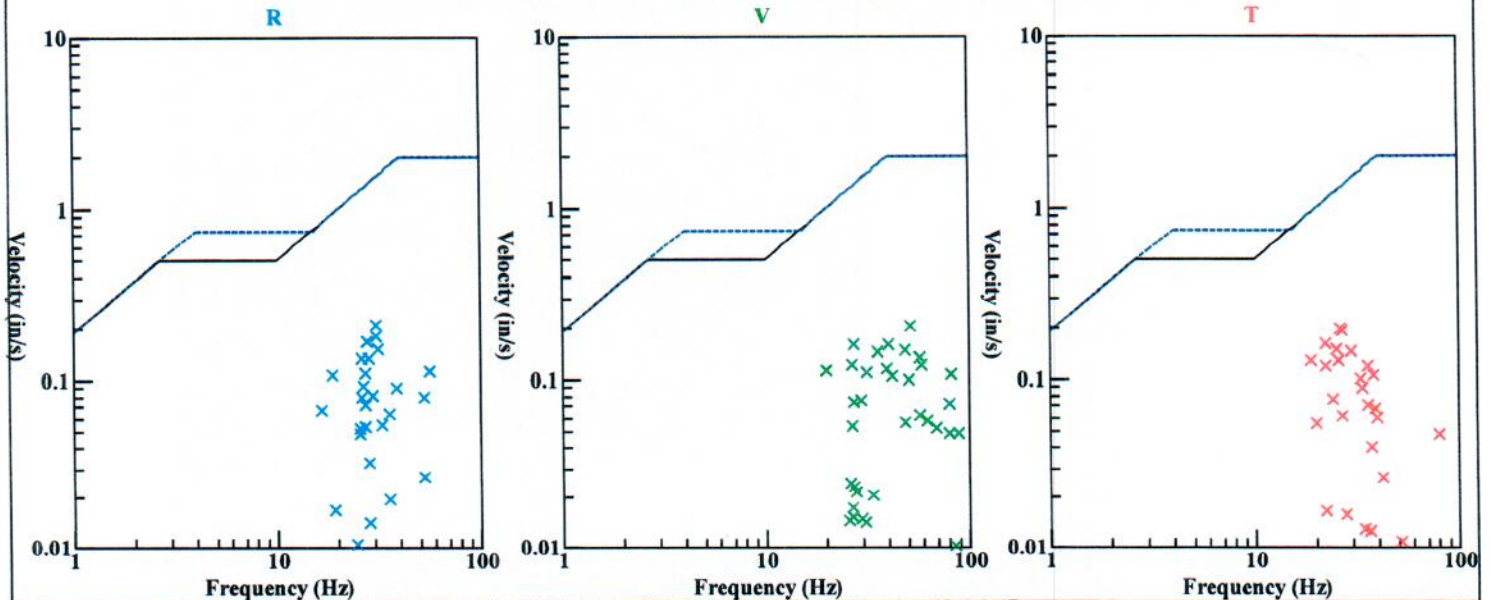
Graph Information

Time Range: -0.25 s to 3 s, Intervals: 0.3250 Seconds

Waveform



Velocity vs. Frequency (Particle Velocity Versus Frequency - USBM Limits (RI 8507, 1980))



Construction Site

d St

n Lakes, New Jersey

At:

ck Lodge

Record: 10072202301201202340179.proevt

Number: 179

Seismograph: Mini-Seis III Pro 10072

Type of Record: Waveform

Date: 1/20/2023 12:02:34 PM

Duration: 3.25 Seconds

Sample Rate: 4096

Pre-Trigger: 0.25 Seconds

Seismic Trigger: 0.065 in/s

Acoustic Trigger: 115.0 dB

Seismic Gain: 10.24

Acoustic Gain: 148.2 dB

Voltage: 6.34

Peaks and Frequencies

PPV Maximum (Geo #1): 0.189 in/s

Acoustic #1: 112.5 dB @ 24.4 Hz (0.6071777 s)

Radial #1: 0.0869 in/s @ 58.5 Hz (0.08911133 s)

Vertical #1: 0.189 in/s @ 47.6 Hz (0.177002 s)

Transverse #1: 0.0681 in/s @ 26.6 Hz (0.2270508 s)

Displacement (Geo #1): 0.000678 in

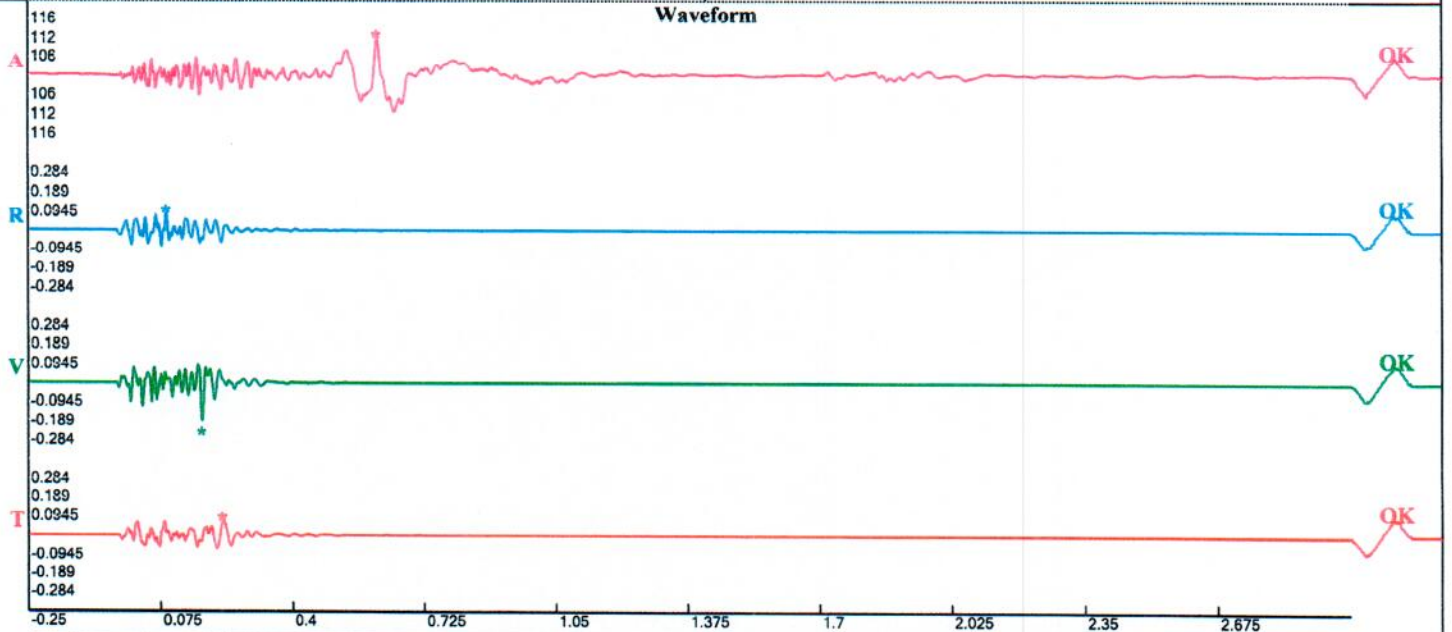
Acceleration (Geo #1): 0.146 g's

Last Calibration Date: 5/19/2022

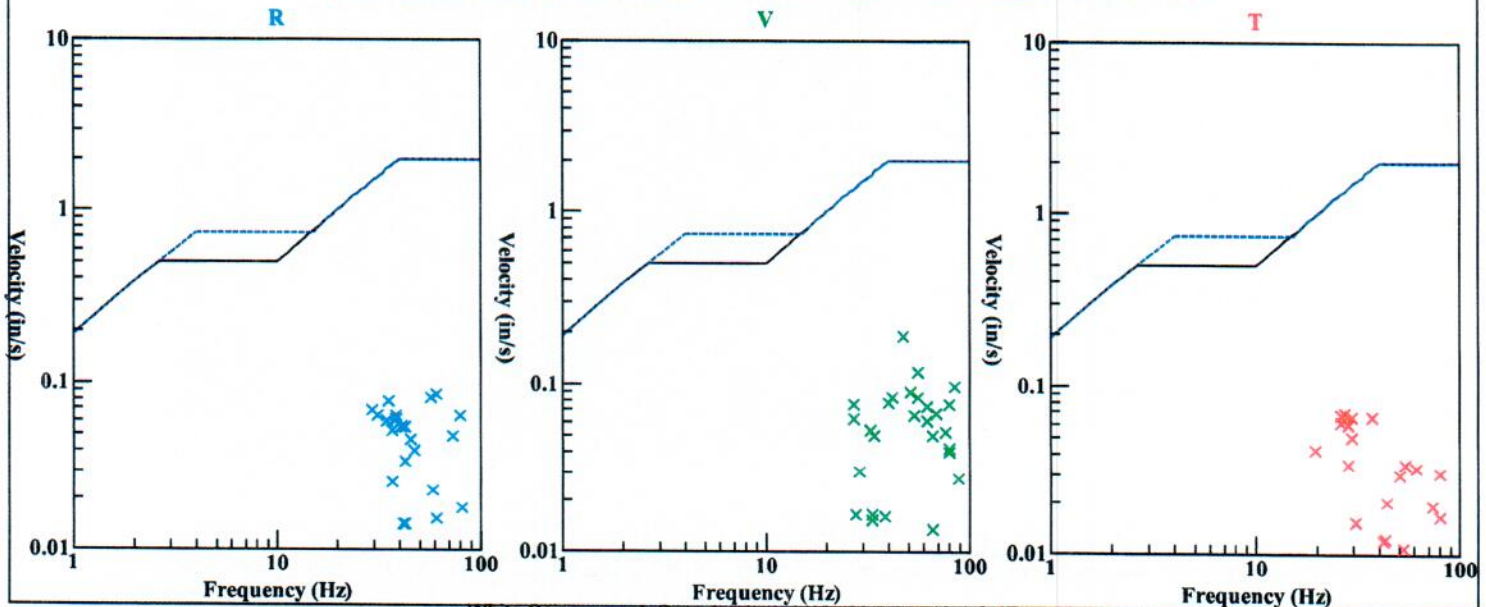
Graph Information

Time Range: -0.25 s to 3 s, Intervals: 0.3250 Seconds

Waveform



Velocity vs. Frequency (Particle Velocity Versus Frequency - USBM Limits (RI 8507, 1980))



Construction Site

St

on Lakes, New Jersey

no At:

sick Lodge

Record: 10072202301241402410181.proevt

Number: 181

Seismograph: Mini-Seis III Pro 10072

Type of Record: Waveform

Date: 1/24/2023 2:02:41 PM

Duration: 3.25 Seconds

Sample Rate: 4096

Pre-Trigger: 0.25 Seconds

Seismic Trigger: 0.065 in/s

Acoustic Trigger: 115.0 dB

Seismic Gain: 10.24

Acoustic Gain: 148.2 dB

Voltage: 6.33

Peaks and Frequencies

PPV Maximum (Geo #1): 0.242 in/s

Acoustic #1: 126.5 dB @ 3.9 Hz (0.657959 s)

Radial #1: 0.178 in/s @ 38.6 Hz (0.2177734 s)

Vertical #1: 0.242 in/s @ 32.5 Hz (0.1855469 s)

Transverse #1: 0.232 in/s @ 30.6 Hz (0.2001953 s)

Displacement (Geo #1): 0.00168 in

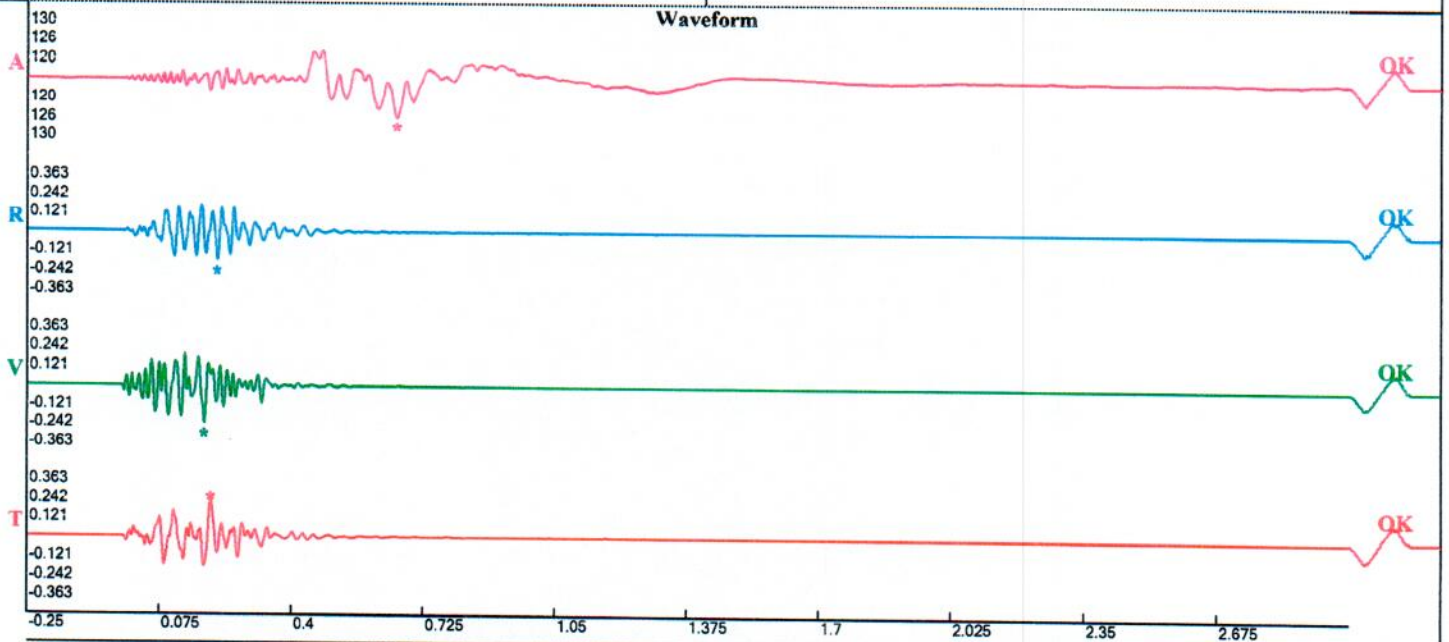
Acceleration (Geo #1): 0.217 g's

Last Calibration Date: 5/19/2022

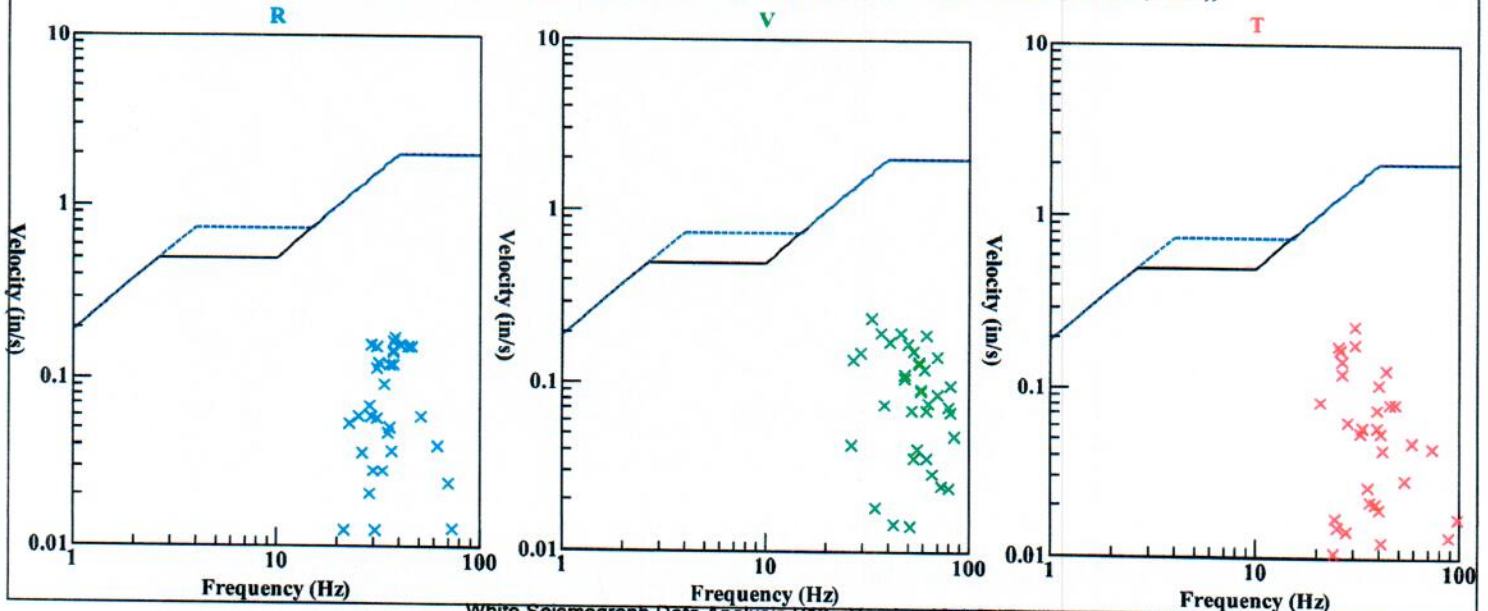
Graph Information

Time Range: -0.25 s to 3 s, Intervals: 0.3250 Seconds

Waveform



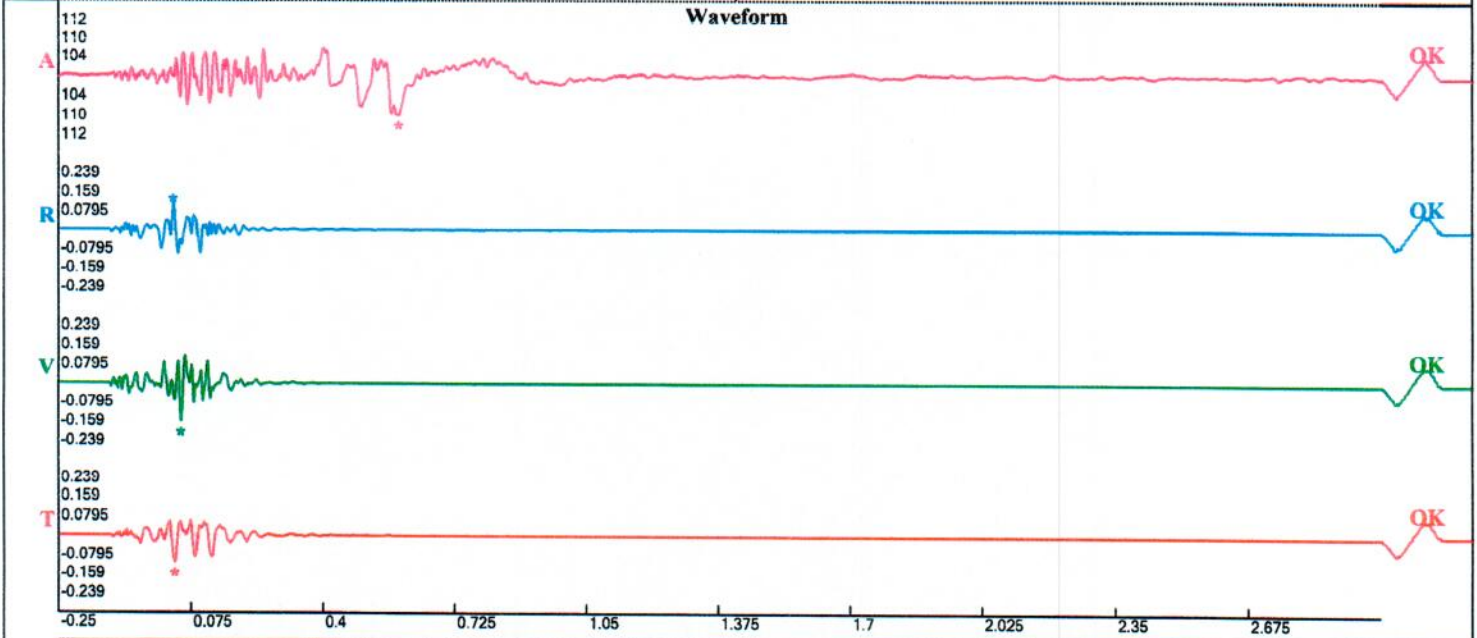
Velocity vs. Frequency (Particle Velocity Versus Frequency - USBM Limits (RI 8507, 1980))



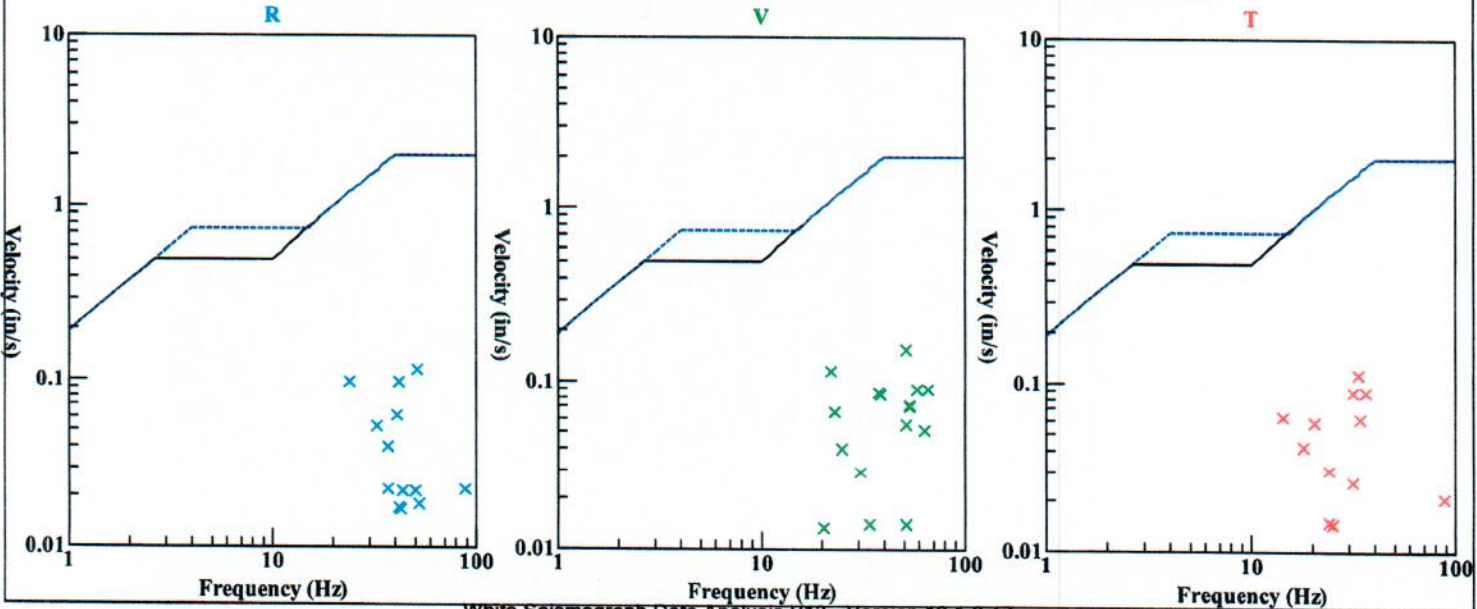
Primary Construction Site
 ...d St
 ...on Lakes, New Jersey
 ...o At:
 ...ick Lodge

Record: 10072202301261132390182.proevt
 Number: 182
 Seismograph: Mini-Seis III Pro 10072
 Type of Record: Waveform
 Date: 1/26/2023 11:32:39 AM
 Duration: 3.25 Seconds
 Sample Rate: 4096
 Pre-Trigger: 0.25 Seconds
 Seismic Trigger: 0.065 in/s
 Acoustic Trigger: 115.0 dB
 Seismic Gain: 10.24
 Acoustic Gain: 148.2 dB
 Voltage: 6.32

Peaks and Frequencies	Graph Information
PPV Maximum (Geo #1): 0.159 in/s Acoustic #1: 109.3 dB @ 7.3 Hz (0.5876465 s) Radial #1: 0.118 in/s @ 50.0 Hz (0.03198242 s) Vertical #1: 0.159 in/s @ 50.0 Hz (0.05151367 s) Transverse #1: 0.114 in/s @ 33.0 Hz (0.03466797 s) Displacement (Geo #1): 0.000802 in Acceleration (Geo #1): 0.134 g's Last Calibration Date: 5/19/2022	Time Range: -0.25 s to 3 s, Intervals: 0.3250 Seconds



Velocity vs. Frequency (Particle Velocity Versus Frequency - USBM Limits (RI 8507, 1980))



Primary Construction Site
 ... St
 ... on Lakes, New Jersey
 ... At:
 ... sick Lodge

Record: 10072202301301232570183.proevt
 Number: 183
 Seismograph: Mini-Seis III Pro 10072
 Type of Record: Waveform
 Date: 1/30/2023 12:32:57 PM
 Duration: 3.25 Seconds
 Sample Rate: 4096
 Pre-Trigger: 0.25 Seconds
 Seismic Trigger: 0.065 in/s
 Acoustic Trigger: 115.0 dB
 Seismic Gain: 10.24
 Acoustic Gain: 148.2 dB
 Voltage: 6.57

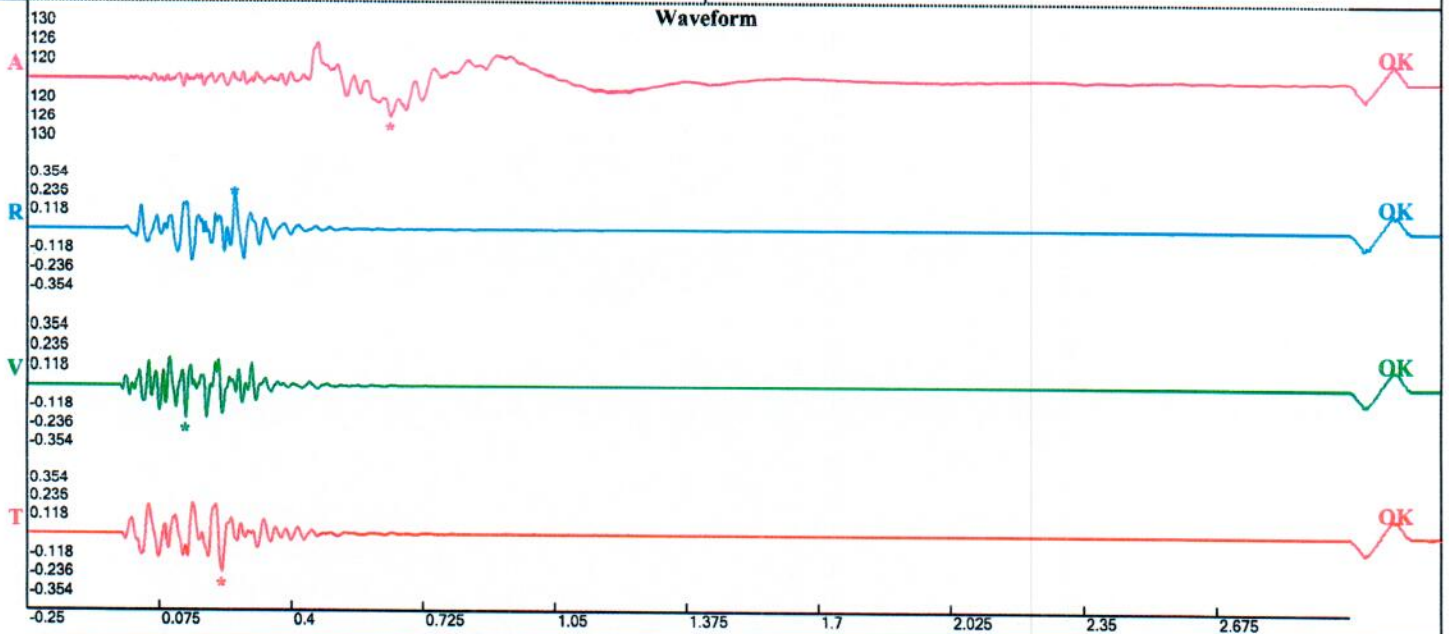
Peaks and Frequencies

PPV Maximum (Geo #1): 0.236 in/s
 Acoustic #1: 125.5 dB @ 2.7 Hz (0.6433105 s)
 Radial #1: 0.213 in/s @ 30.6 Hz (0.2609863 s)
 Vertical #1: 0.204 in/s @ 47.6 Hz (0.1394043 s)
 Transverse #1: 0.236 in/s @ 28.1 Hz (0.2285156 s)
 Displacement (Geo #1): 0.00151 in
 Acceleration (Geo #1): 0.149 g's
 Last Calibration Date: 5/19/2022

Graph Information

Time Range: -0.25 s to 3 s, Intervals: 0.3250 Seconds

Waveform



Velocity vs. Frequency (Particle Velocity Versus Frequency - USBM Limits (RI 8507, 1980))

