



A CRH COMPANY

FAX COVER SHEET

TILCON NEW YORK INC.
9 Entin Road
Parsippany, NJ 07054

TO: Ms. Iris Heredia

FROM: Daniel Naiman – Pompton Lakes Assistant Plant Manager

SUBJECT: Monthly Explosives Use Report

TELEPHONE: (973) 294-9299

DATE: 4/14/2023

TOTAL PAGES: 18 (Including Cover)

MESSAGE: Monthly explosives use report for Pompton Lakes Quarry
Month of March 2023

Monthly Explosives Use Report

NOTE: COMPLETE ALL APPLICABLE ENTRIES ON FRONT AND REVERSE SIDES OF THIS FORM. THE COMPLETED FORM IS TO BE MAILED TO THE OFFICE OF SAFETY COMPLIANCE WITHIN 10 DAYS AFTER THE END OF THE MONTH FOR WHICH THE REPORT IS DUE.

Name <u>Tilcon - Pompton Lakes Facility</u>	Phone No. <u>(973) 835-0028</u>
Street Address <u>Foot of Broad Street</u>	City <u>Pompton Lakes</u>
State <u>NJ</u>	Zip <u>07442</u>

MONTH AND YEAR OF REPORT March 2023	Explosives Lbs.	Detonator (Caps) No.	Gunpowder (Primer)	Other
Beginning Actual Count Inventory First of Month	-	-	-	
Purchases During the Month	82,090	746	-	
Total (Item 1 plus Item 2)	82,090	746	-	
Blasting Summary	82,090	746	-	
Miscellaneous Adjustments	-	-	-	
Month Ending Inventory on Hand by actual Count	-	-	-	

Name of Supplier :	DATE	INV. #	Explosives Lbs.	Detonator (Caps) No.	Gunpowder (Primer)	Other
Maine D&B	3/1/2023	143201	455	33	-	
Maurer & Scott	3/2/2023	71071	28,660	88	-	
Maine D&B	3/2/2023	143229	5,773	50	-	
Maine D&B	3/3/2023	143308	500	35	-	
Maine D&B	3/7/2023	143398	638	41	-	
Maine D&B	3/8/2023	143457	548	31	-	
Maine D&B	3/9/2023	143543	365	34	-	
Maine D&B	3/17/2023	143891	5,090	62	-	
Maine D&B	3/21/2023	143956	866	52	-	
Maine D&B	3/23/2023	144213	683	42	-	

TOTAL NUMBER OF BLASTS - 14

Comments: blasts continued on next page

MAIL TO OFFICE OF PUBLIC SAFETY COMPLIANCE, PO BOX 386, TRENTON, NEW JERSEY 08625-0386
 PHONE: (609) 292-2096 FAX: (609) 777-4589

Tilcon - Pompton Lakes Facility
 (LICENSEE SIGNATURE)

Monthly Explosives Use Report

NOTE: COMPLETE ALL APPLICABLE ENTRIES ON FRONT AND REVERSE SIDES OF THIS FORM. THE COMPLETED FORM IS TO BE MAILED TO THE OFFICE OF SAFETY COMPLIANCE WITHIN 10 DAYS AFTER THE END OF THE MONTH FOR WHICH THE REPORT IS DUE.

Name <u>Tilcon - Pompton Lakes Facility</u>	Phone No. <u>(973) 835-0028</u>
Street Address <u>Foot of Broad Street</u>	City <u>Pompton Lakes</u>
State <u>NJ</u>	Zip <u>07442</u>

MONTH AND YEAR OF REPORT March 2023	Explosives Lbs.	Detonator (Caps) No.	Gunpowder (Primer)	Other
Beginning Actual Count Inventory First of Month	-	-	-	
Purchases During the Month	82,090	746	-	
Total (Item 1 plus Item 2)	82,090	746	-	
Blasting Summary	82,090	746	-	
Miscellaneous Adjustments	-	-	-	
Month Ending Inventory on Hand by actual Count	-	-	-	
Name of Supplier :	DATE	INV. #		
Maine D&B	3/24/2023	144291	6,644	52
Maine D&B	3/28/2023	144438	500	36
Maurer & Scott	3/31/2023	71472	24,580	80
Maine D&B	3/31/2023	144672	6,788	110

TOTAL NUMBER OF BLASTS - 14

Comments:

MAIL TO OFFICE OF PUBLIC SAFETY COMPLIANCE, PO BOX 386, TRENTON, NEW JERSEY 08625-0386
 PHONE: (609) 292-2096 FAX: (609) 777-4589

Tilcon - Pompton Lakes Facility
(LICENSEE SIGNATURE)

EXPLOSIVES USED IN BLASTING

Shots	Date	Time	Site Location	Name of Blaster	Permit #	High Explo. Lbs.	Caps or Det.	Max. lbs. Per Delay	Nearest Structure (Feet)	Seismic PPV and Frequency			Seismic D B Level	Type of Shot (Bank, Trench, Etc.)
										Trans.	Vert.	Long.		
SHOT 64ER-23	3/1	11:30AM	Tilcon Pompton Lakes	John Currier	10259	455	33	57	440	PPV: .059 HZ: 1.1	.139 41.0	.075 35.9	109.8	Pre-split
SHOT 01-23	3/2	11:00AM	Tilcon Pompton Lakes	Kyle Boyer	6191	28,660	88	681	2,253	PPV: .235 HZ: 20.8	.130 41.7	.177 17.9	107.0	Mass
SHOT 65ER-23	3/2	12:30PM	Tilcon Pompton Lakes	John Currier	10259	5,773	50	482	565	PPV: .248 HZ: 32.0	.588 51.2	.415 34.7	118.8	Mass
SHOT 66ER-23	3/3	10:30AM	Tilcon Pompton Lakes	John Currier	10259	500	35	59	404	PPV: .100 HZ: 43.6	.197 46.5	.173 44.5	114.2	Pre-split
SHOT 67ER-23	3/7	11:30AM	Tilcon Pompton Lakes	John Currier	10259	638	41	64	393	PPV: .135 HZ: 22.5	.167 41.0	.104 37.2	112.8	Pre-split
SHOT 68ER-23	3/8	11:00AM	Tilcon Pompton Lakes	John Currier	10259	548	31	74	471	PPV: .168 HZ: 21.1	.140 25.6	.151 34.7	114.6	Pre-split
SHOT 69ER-23	3/9	10:30AM	Tilcon Pompton Lakes	John Currier	10259	365	34	61	391	PPV: .105 HZ: 33.0	.157 47.6	.056 51.2	108.6	Pre-split
SHOT 70ER-23	3/17	11:30AM	Tilcon Pompton Lakes	John Currier	10259	5,090	62	325	513	PPV: .588 HZ: 33.3	.988 62.5	.740 55.6	120.4	Mass
SHOT 71ER-23	3/21	1:00PM	Tilcon Pompton Lakes	John Currier	10259	866	52	70	462	PPV: .073 HZ: 24.1	.203 44.5	.126 36.6	110.3	Pre-split
SHOT 72ER-23	3/23	12:00PM	Tilcon Pompton Lakes	John Currier	10259	683	42	68	386	PPV: .114 HZ: 22.5	.201 46.5	.113 62.1	110.4	Pre-split
SHOT 73ER-23	3/24	11:00AM	Tilcon Pompton Lakes	John Currier	10259	6,644	52	338	473	PPV: .650 HZ: 36.6	.483 58.5	.559 30.6	122.3	Mass
SHOT 74ER-23	3/28	11:30AM	Tilcon Pompton Lakes	John Currier	10259	500	36	70	380	PPV: .083 HZ: 26.6	.126 58.5	.124 51.2	106.1	Pre-split
SHOT 02-23	3/31	10:30AM	Tilcon Pompton Lakes	Kyle Boyer	6191	24,580	80	633	2,255	PPV: .212 HZ: 27.8	.215 41.7	.262 22.7	109.3	Mass
SHOT 75ER-23	3/31	11:45AM	Tilcon Pompton Lakes	John Currier	10259	6,788	110	341	517	PPV: .091 HZ: 26.3	.085 43.6	.136 25.9	117.6	Mass
SHOT										PPV:				
SHOT										HZ:				
TOTALS						82,090	746							

Quarry Construction Site
 0 Broad St
 Pompton Lakes, New Jersey
 Seismo At:
 Jersick Lodge

Record: 10072202303011130190196.proevt
 Number: 196
 Seismograph: Mini-Seis III Pro 10072
 Type of Record: Waveform
 Date: 3/1/2023 11:30:19 AM
 Duration: 3.25 Seconds
 Sample Rate: 4096
 Pre-Trigger: 0.25 Seconds
 Seismic Trigger: 0.065 in/s
 Acoustic Trigger: 115.0 dB
 Seismic Gain: 10.24
 Acoustic Gain: 148.2 dB
 Voltage: 6.46

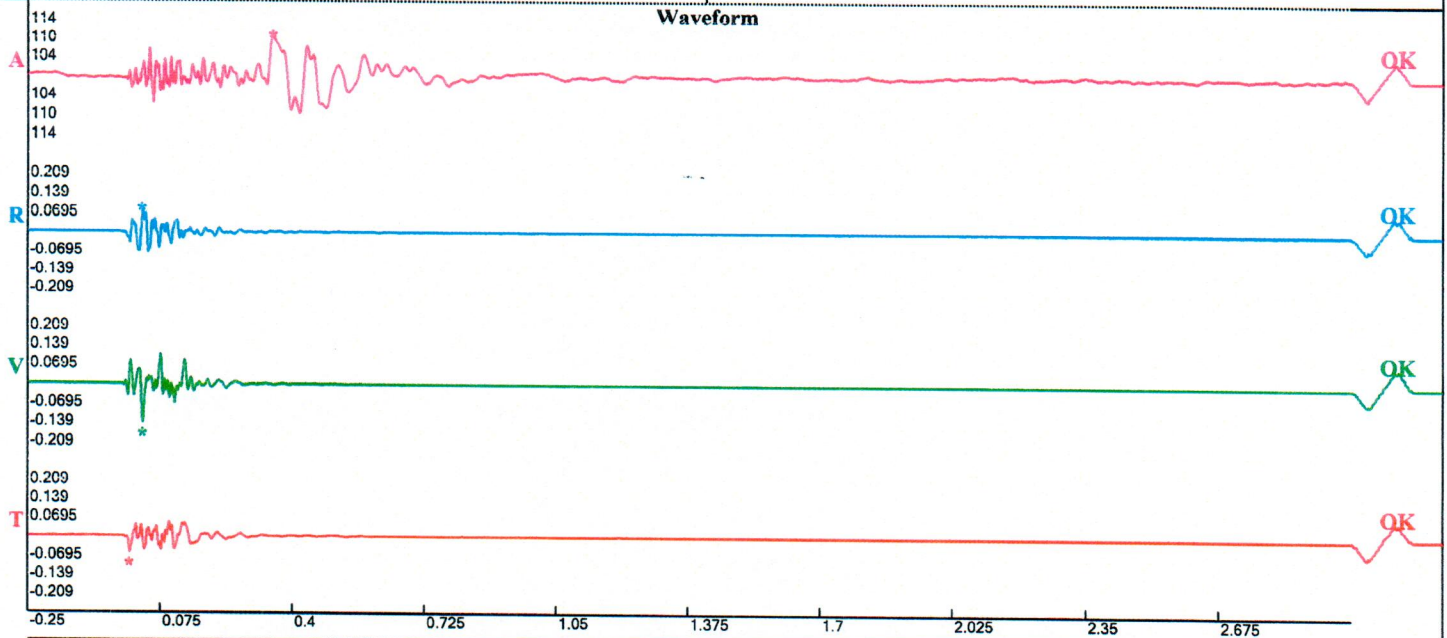
Peaks and Frequencies

PPV Maximum (Geo #1): 0.139 in/s
 Acoustic #1: 109.8 dB @ 10.8 Hz (0.3518066 s)
 Radial #1: 0.0747 in/s @ 35.9 Hz (0.03149414 s)
 Vertical #1: 0.139 in/s @ 41.0 Hz (0.03198242 s)
 Transverse #1: 0.0588 in/s @ 1.1 Hz (0 s)
 Displacement (Geo #1): 0.000539 in
 Acceleration (Geo #1): 0.129 g's
 Last Calibration Date: 5/19/2022

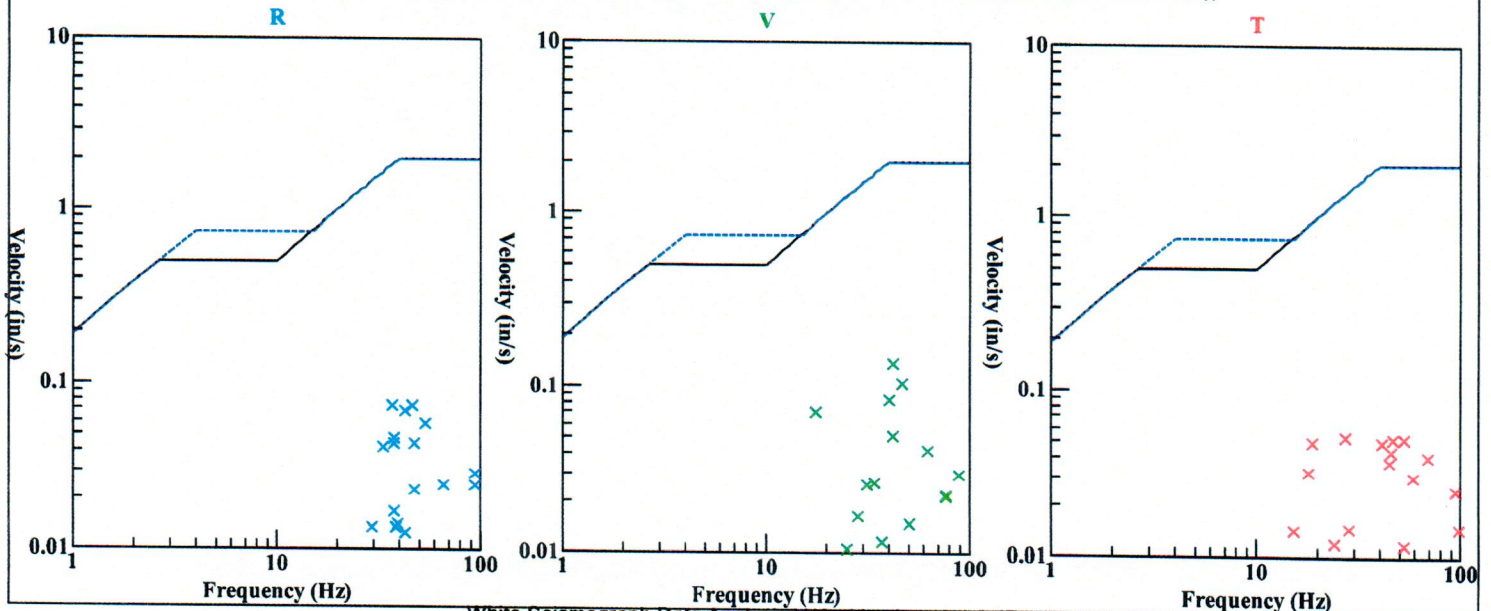
Graph Information

Time Range: -0.25 s to 3 s, Intervals: 0.3250 Seconds

Waveform



Velocity vs. Frequency (Particle Velocity Versus Frequency - USBM Limits (RI 8507, 1980))



Seismic Analysis

Velocity Waveform Analysis

Serial Number: 11248
Firmware Version: 0C-10.29
Event Date: 03/02/2023 11:00:07 (UTC -05:00)
Event number: 7
Recording Time: 10 s
Client: Tilcon NJ
Operation: Pompton Lakes Quarry
Location: 211 Hamburg Turnpike
Distance:
Operator: Vibra-Tech Engineers
Comment: 150
Seismic Trigger: 0.03 in/s
Sound Trigger: 123.5 dB

Additional Info: -of building
 j-GEO-19770
 N41 00.064, W074 18.899

Summary Data

	L	T	V
PPV (in/s):	0.1775	0.235	0.13
FREQ (HZ):	17.9	20.8	41.7
PD (.001"):	1.475	1.692	0.93
PPA (g):	0.08464	0.08464	0.09766

Peak Vector Sum: 0.245 in/s
Peak Air Pressure: 107 dB
 0.0006 psi @ 6.8 HZ

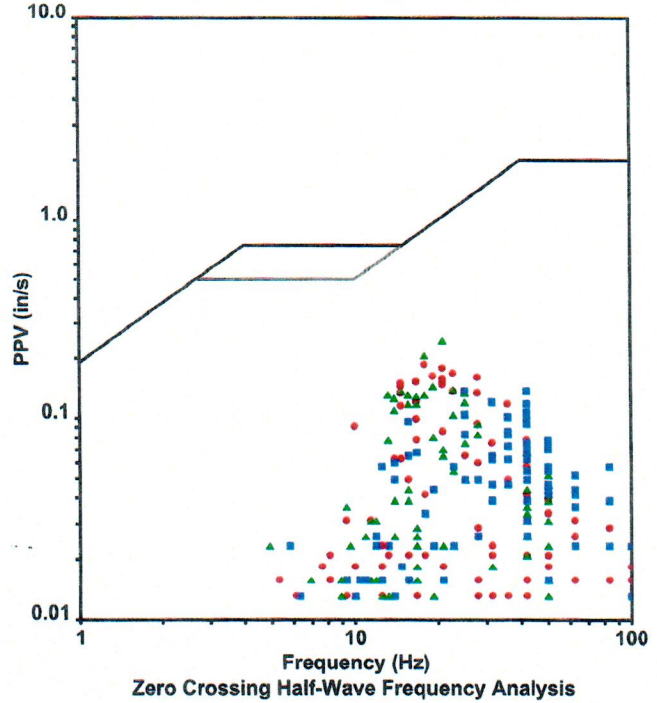
Shaketable Calibrated

On: 08/09/2022 (UTC -05:00)
By: Vibra-Tech, Inc.
 2700 Holloway Road - Suite 113
 Louisville, KY 40203 U.S.A.

USBM Safe Blasting Levels

SSN: 11248 Event: 7

● Longitudinal ▲ Transverse ■ Vertical

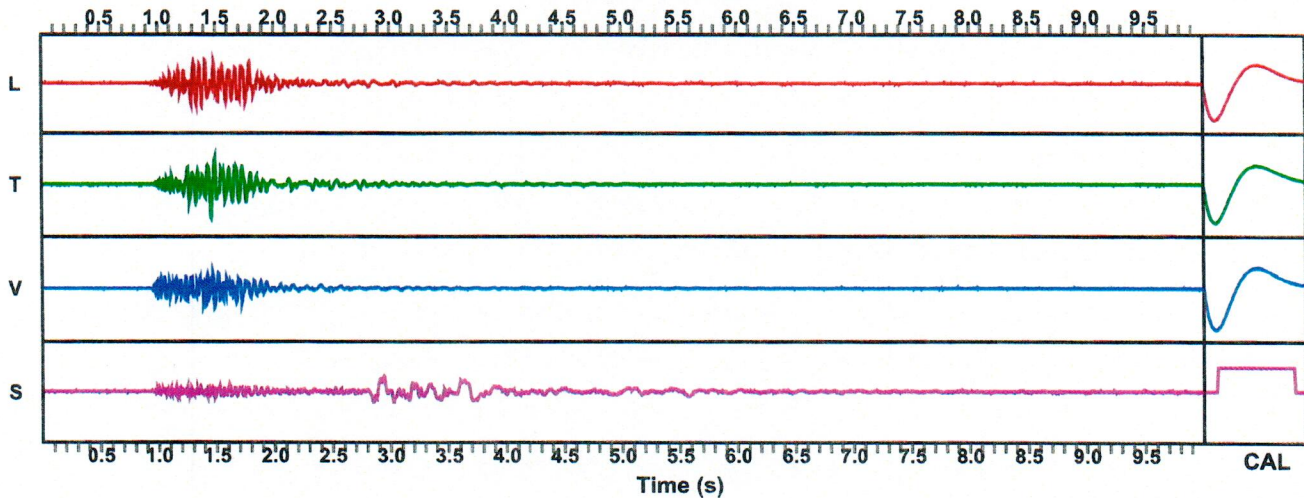


Waveform Graph Scale

Time Scale: 0.1 s
Seismic Scale: +/- 0.3525 in/s
Sound Scale: +/- 0.0023 psi

Velocity Waveform

SSN: 11248 Event: 7



Quarry Construction Site
 Broad St
 Mottom Lakes, New Jersey
 Seismo At:
 Jersick Lodge

Record: 10072202303021230290197.proevt
 Number: 197
 Seismograph: Mini-Seis III Pro 10072
 Type of Record: Waveform
 Date: 3/2/2023 12:30:29 PM
 Duration: 3.25 Seconds
 Sample Rate: 4096
 Pre-Trigger: 0.25 Seconds
 Seismic Trigger: 0.065 in/s
 Acoustic Trigger: 115.0 dB
 Seismic Gain: 10.24
 Acoustic Gain: 148.2 dB
 Voltage: 6.41

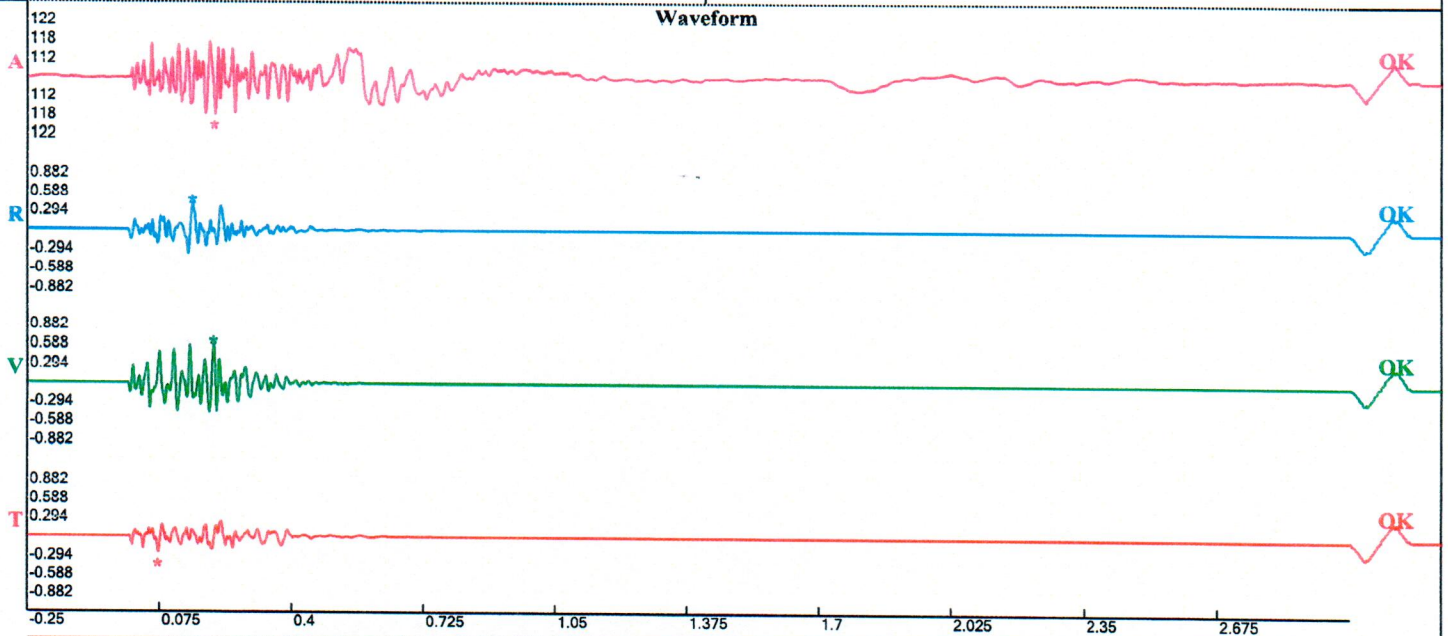
Peaks and Frequencies

PPV Maximum (Geo #1): 0.588 in/s
 Acoustic #1: 118.8 dB @ 47.6 Hz (0.2104492 s)
 Radial #1: 0.415 in/s @ 34.7 Hz (0.1555176 s)
 Vertical #1: 0.588 in/s @ 51.2 Hz (0.2077637 s)
 Transverse #1: 0.248 in/s @ 32.0 Hz (0.0715332 s)
 Displacement (Geo #1): 0.00233 in
 Acceleration (Geo #1): 0.634 g's
 Last Calibration Date: 5/19/2022

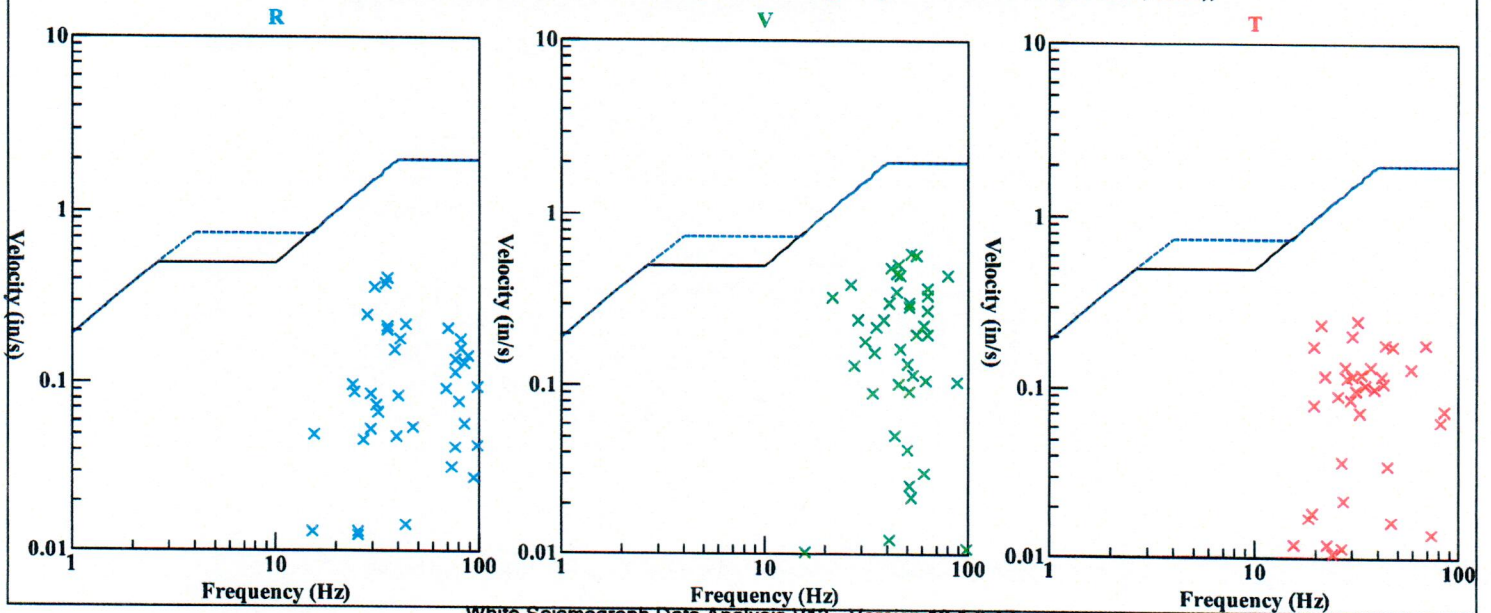
Graph Information

Time Range: -0.25 s to 3 s, Intervals: 0.3250 Seconds

Waveform



Velocity vs. Frequency (Particle Velocity Versus Frequency - USBM Limits (RI 8507, 1980))



Quarry Construction Site
 10 Broad St
 Pompton Lakes, New Jersey
 Seismo At:
 Jersick Lodge

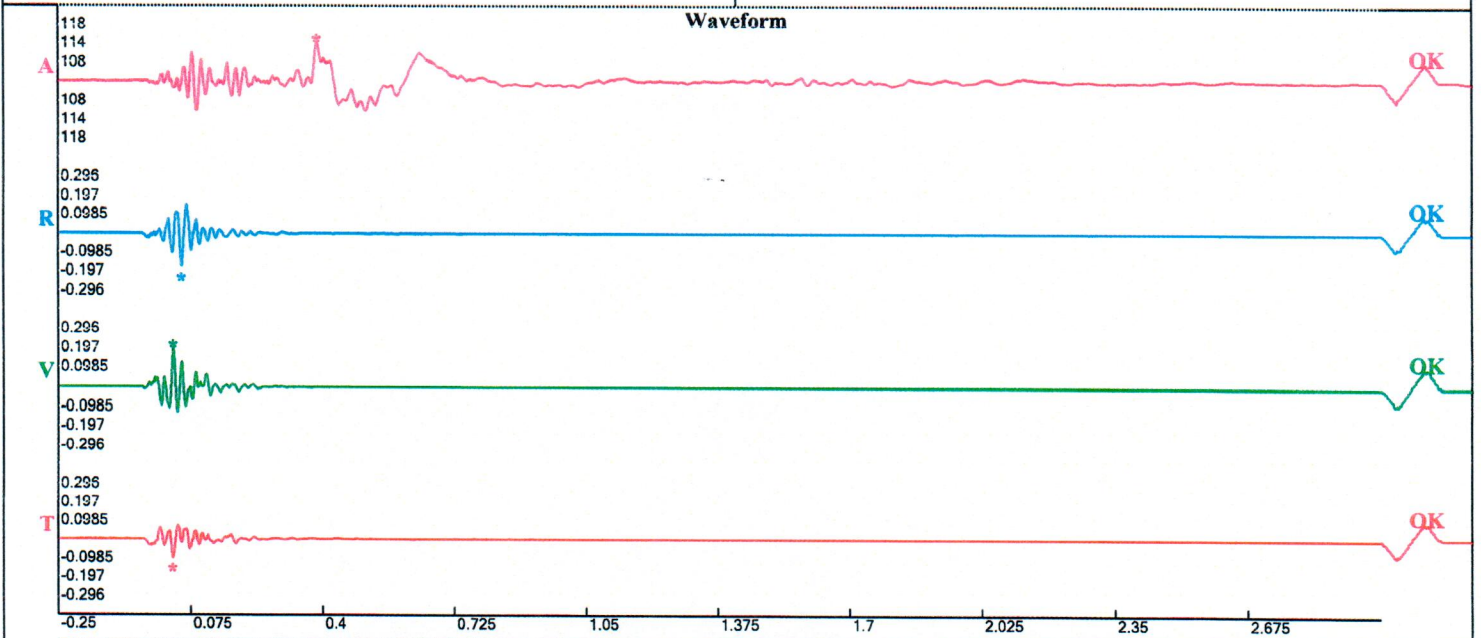
Record: 10072202303031030370198.proevt
 Number: 198
 Seismograph: Mini-Seis III Pro 10072
 Type of Record: Waveform
 Date: 3/3/2023 10:30:37 AM
 Duration: 3.25 Seconds
 Sample Rate: 4096
 Pre-Trigger: 0.25 Seconds
 Seismic Trigger: 0.065 in/s
 Acoustic Trigger: 115.0 dB
 Seismic Gain: 10.24
 Acoustic Gain: 148.2 dB
 Voltage: 6.41

Peaks and Frequencies

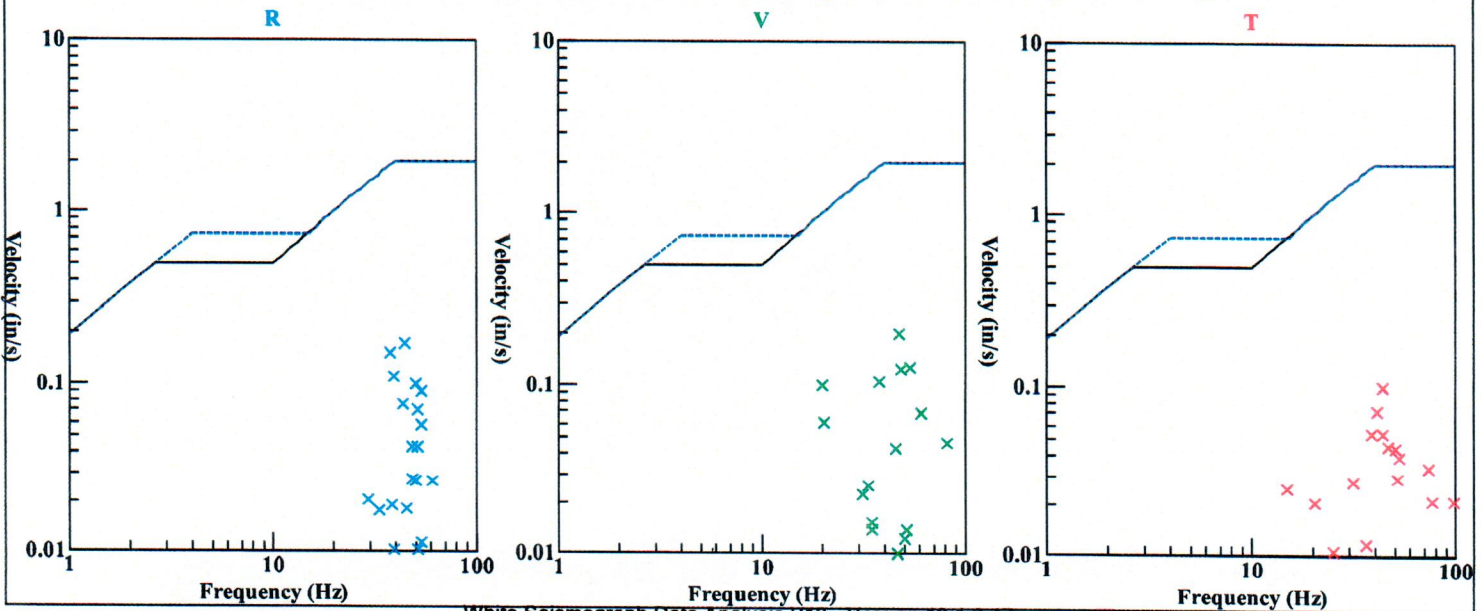
PPV Maximum (Geo #1): 0.197 in/s
 Acoustic #1: 114.2 dB @ 9.3 Hz (0.385498 s)
 Radial #1: 0.173 in/s @ 44.5 Hz (0.05322266 s)
 Vertical #1: 0.197 in/s @ 46.5 Hz (0.03173828 s)
 Transverse #1: 0.1 in/s @ 43.6 Hz (0.03027344 s)
 Displacement (Geo #1): 0.000725 in
 Acceleration (Geo #1): 0.133 g's
 Last Calibration Date: 5/19/2022

Graph Information

Time Range: -0.25 s to 3 s, Intervals: 0.3250 Seconds



Velocity vs. Frequency (Particle Velocity Versus Frequency - USBM Limits (RI 8507, 1980))



Perry Construction Site
 d St
 Lakes, New Jersey
 At:
 k Lodge

Record: 10072202303071130240199.proevt
 Number: 199
 Seismograph: Mini-Seis III Pro 10072
 Type of Record: Waveform
 Date: 3/7/2023 11:30:24 AM
 Duration: 3.25 Seconds
 Sample Rate: 4096
 Pre-Trigger: 0.25 Seconds
 Seismic Trigger: 0.065 in/s
 Acoustic Trigger: 115.0 dB
 Seismic Gain: 10.24
 Acoustic Gain: 148.2 dB
 Voltage: 6.42

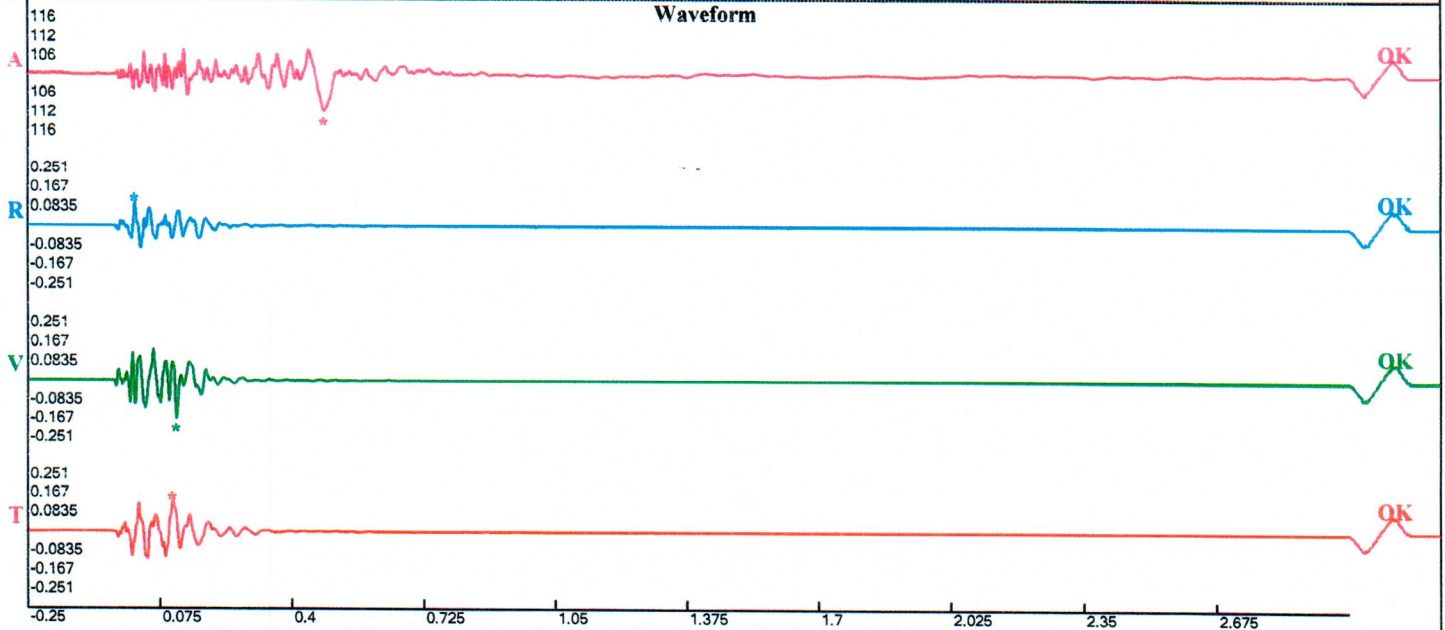
Peaks and Frequencies

PPV Maximum (Geo #1): 0.167 in/s
 Acoustic #1: 112.8 dB @ 10.4 Hz (0.479248 s)
 Radial #1: 0.104 in/s @ 37.2 Hz (0.01269531 s)
 Vertical #1: 0.167 in/s @ 41.0 Hz (0.1154785 s)
 Transverse #1: 0.135 in/s @ 22.5 Hz (0.1064453 s)
 Displacement (Geo #1): 0.00114 in
 Acceleration (Geo #1): 0.144 g's
 Last Calibration Date: 5/19/2022

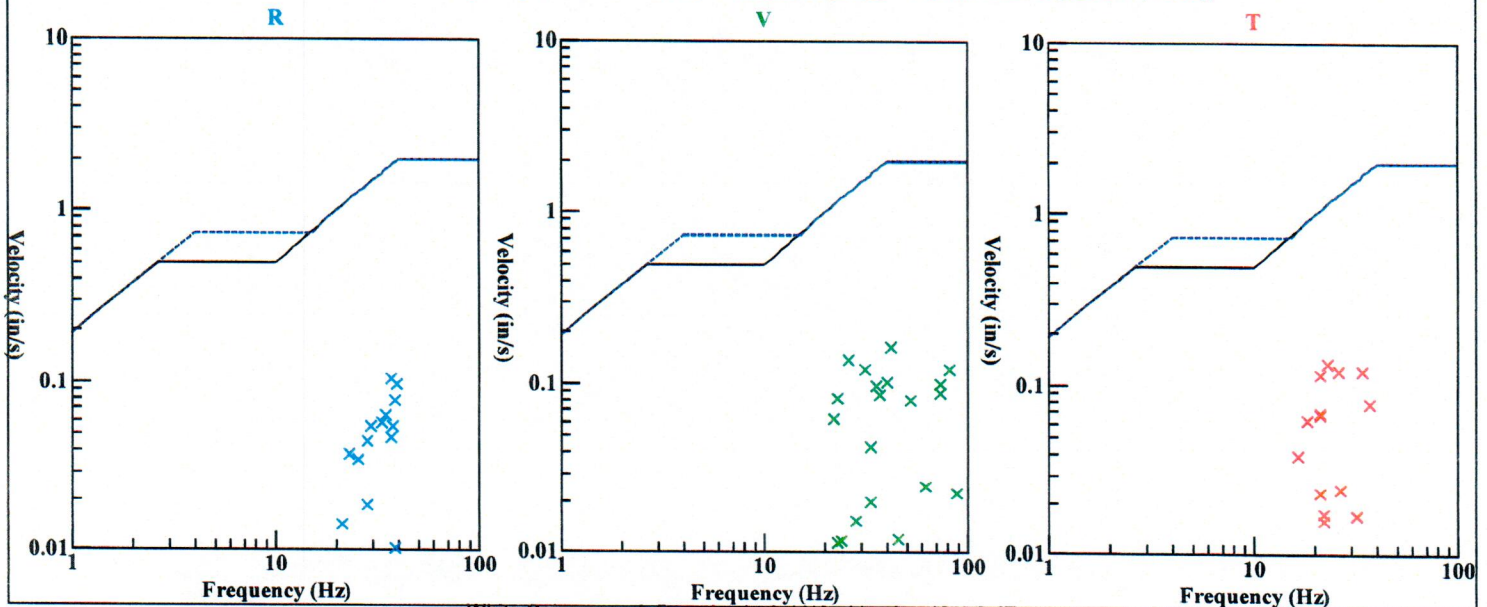
Graph Information

Time Range: -0.25 s to 3 s, Intervals: 0.3250 Seconds

Waveform



Velocity vs. Frequency (Particle Velocity Versus Frequency - USBM Limits (RI 8507, 1980))

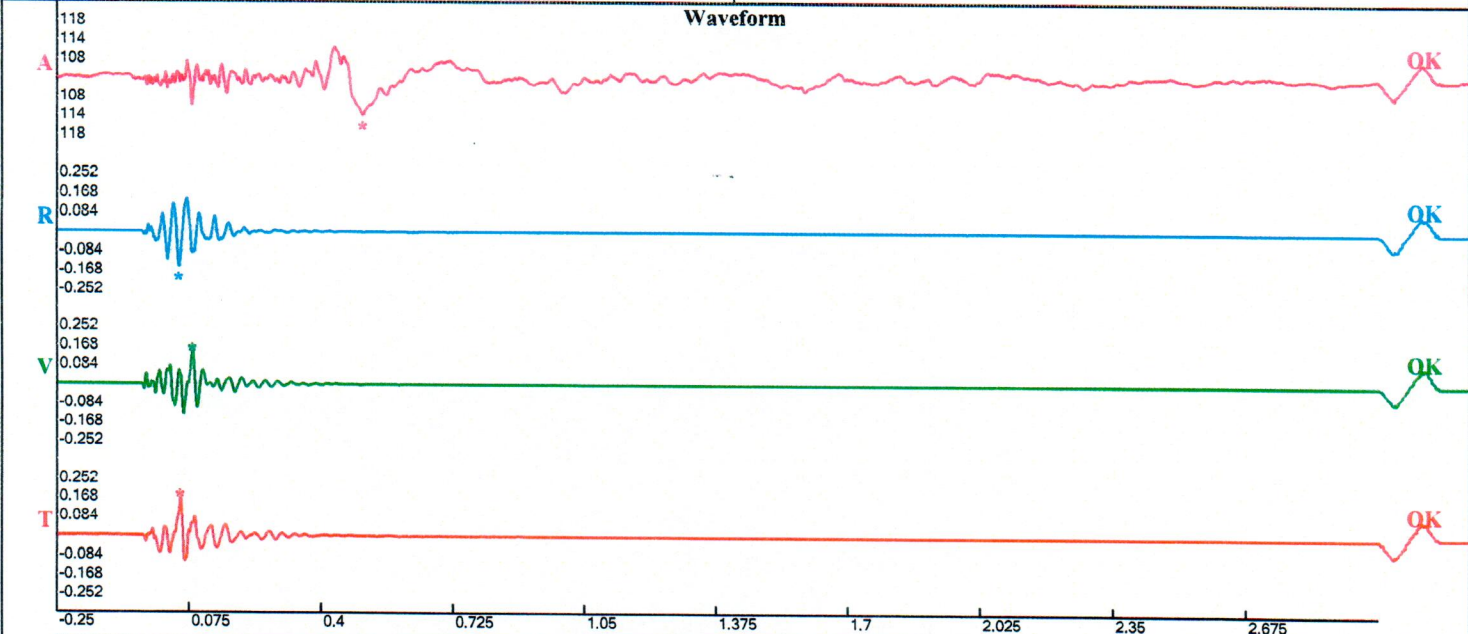


Quarry Construction Site
 Broad St
 Hampton Lakes, New Jersey
 Seismo At:
 Jersick Lodge

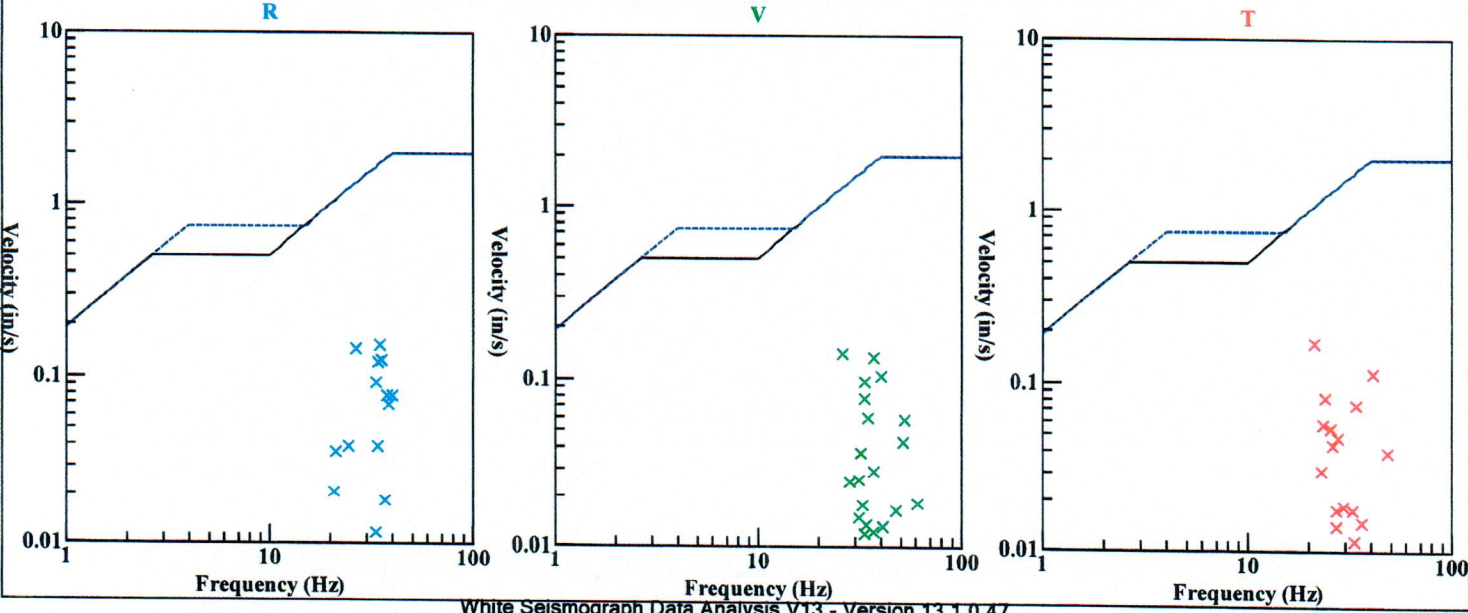
Record: 10072202303081100340202.proevt
 Number: 202
 Seismograph: Mini-Seis III Pro 10072
 Type of Record: Waveform
 Date: 3/8/2023 11:00:34 AM
 Duration: 3.25 Seconds
 Sample Rate: 4096
 Pre-Trigger: 0.25 Seconds
 Seismic Trigger: 0.065 in/s
 Acoustic Trigger: 115.0 dB
 Seismic Gain: 10.24
 Acoustic Gain: 148.2 dB
 Voltage: 6.41

Peaks and Frequencies
 PPV Maximum (Geo #1): 0.168 in/s
 Acoustic #1: 113.8 dB @ 3.7 Hz (0.5026855 s)
 Radial #1: 0.151 in/s @ 34.7 Hz (0.05029297 s)
 Vertical #1: 0.14 in/s @ 25.6 Hz (0.08300781 s)
 Transverse #1: 0.168 in/s @ 21.1 Hz (0.05322266 s)
 Displacement (Geo #1): 0.00102 in
 Acceleration (Geo #1): 0.113 g's
 Last Calibration Date: 5/19/2022

Graph Information
 Time Range: -0.25 s to 3 s, Intervals: 0.3250 Seconds



Velocity vs. Frequency (Particle Velocity Versus Frequency - USBM Limits (RI 8507, 1980))



...y Construction Site
 ...d St
 ...on Lakes, New Jersey
 ...mo At:
 ...cPherson Hall

Record: 10072202303091030320203.proevt
 Number: 203
 Seismograph: Mini-Seis III Pro 10072
 Type of Record: Waveform
 Date: 3/9/2023 10:30:32 AM
 Duration: 3.25 Seconds
 Sample Rate: 4096
 Pre-Trigger: 0.25 Seconds
 Seismic Trigger: 0.065 in/s
 Acoustic Trigger: 115.0 dB
 Seismic Gain: 10.24
 Acoustic Gain: 148.2 dB
 Voltage: 6.28

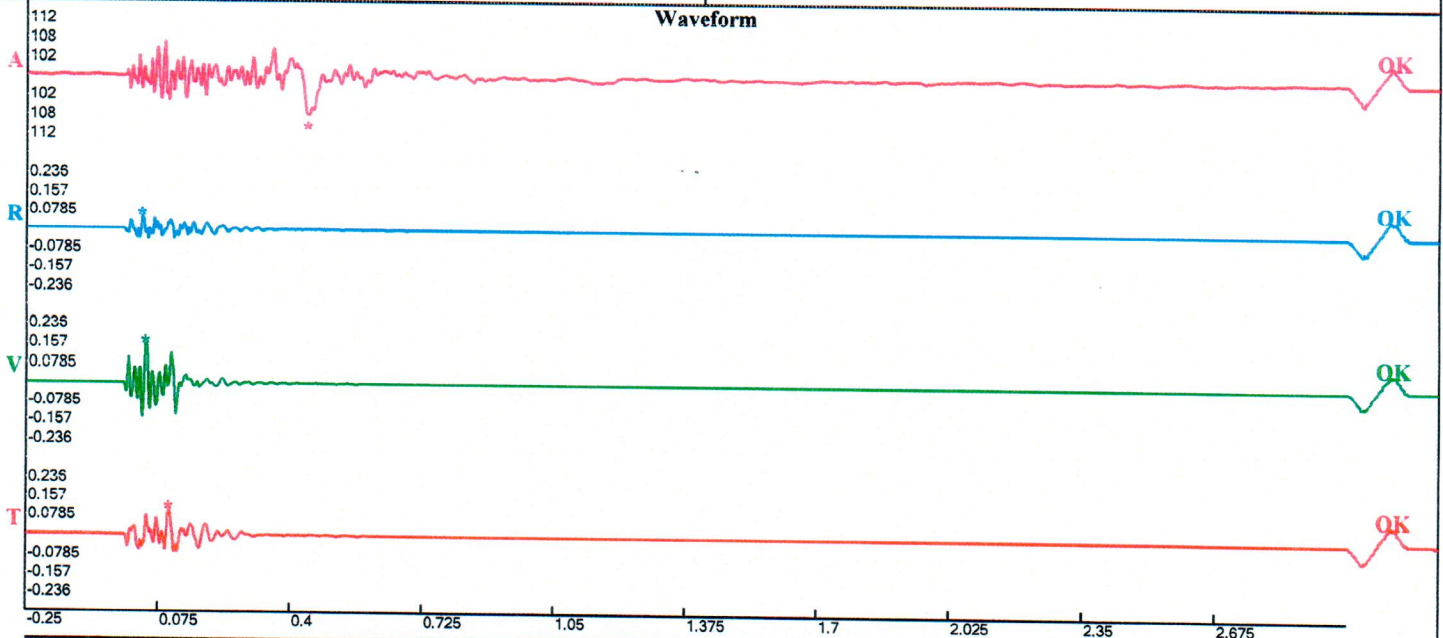
Peaks and Frequencies

PPV Maximum (Geo #1): 0.157 in/s
 Acoustic #1: 108.6 dB @ 10.9 Hz (0.4414063 s)
 Radial #1: 0.0563 in/s @ 51.2 Hz (0.03466797 s)
 Vertical #1: 0.157 in/s @ 47.6 Hz (0.04370117 s)
 Transverse #1: 0.105 in/s @ 33.0 Hz (0.1018066 s)
 Displacement (Geo #1): 0.000644 in
 Acceleration (Geo #1): 0.169 g's
 Last Calibration Date: 5/19/2022

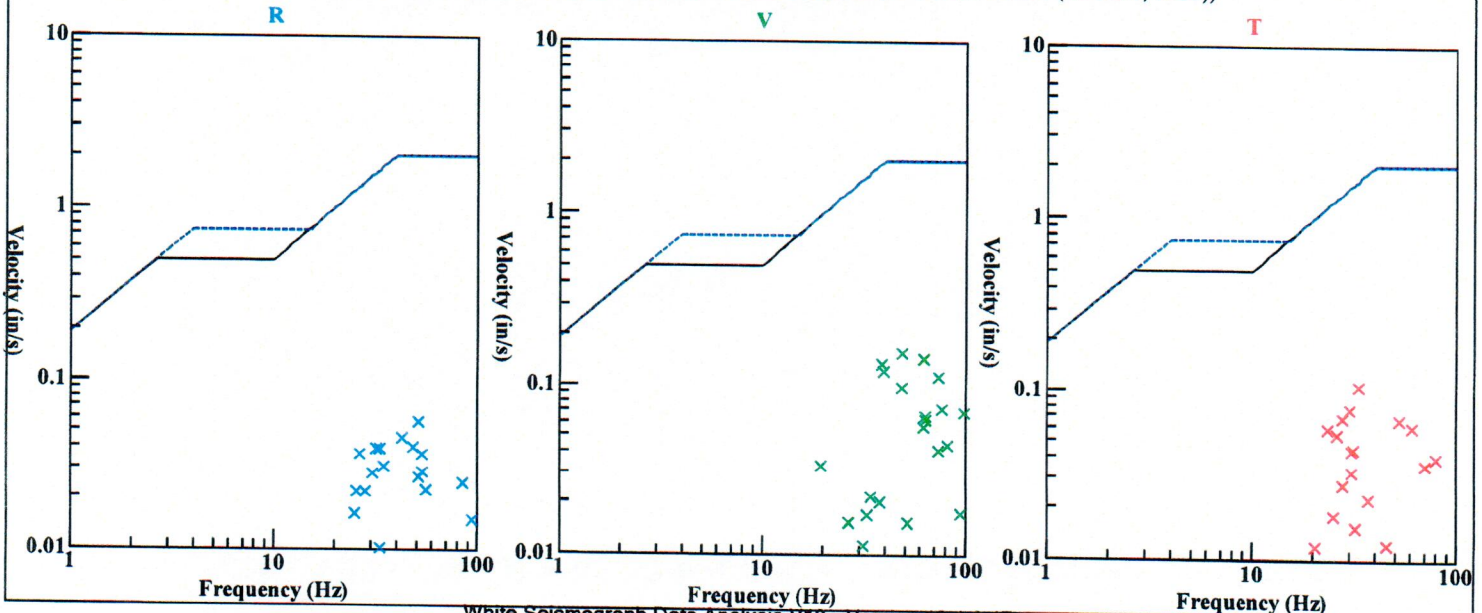
Graph Information

Time Range: -0.25 s to 3 s, Intervals: 0.3250 Seconds

Waveform



Velocity vs. Frequency (Particle Velocity Versus Frequency - USBM Limits (RI 8507, 1980))



Seismic Analysis Velocity Waveform Analysis

Serial Number: 11362
Firmware Version: 0C-10.29
Event Date: 03/17/2023 11:30:07 (UTC -04:00)
Event number: 78
Recording Time: 5 s
Client: Tilcon New Jersey
Operation: Pompton Lakes Quarry
Location: Jernick Hall
Distance:
Operator: Vibra-Tech Engineers
Comment: Elks Moore Jernick Hall
Seismic Trigger: 0.03 in/s
Sound Trigger: 125 dB

Additional Info:
 j-GEO-43208
 N41 0.783, W074 18.115

Summary Data

	L	T	V
PPV (in/s):	0.74	0.5875	0.9875
FREQ (HZ):	55.6	33.3	62.5
PD (.001"):	3.627	2.275	2.845
PPA (g):	0.9635	0.5143	1.38

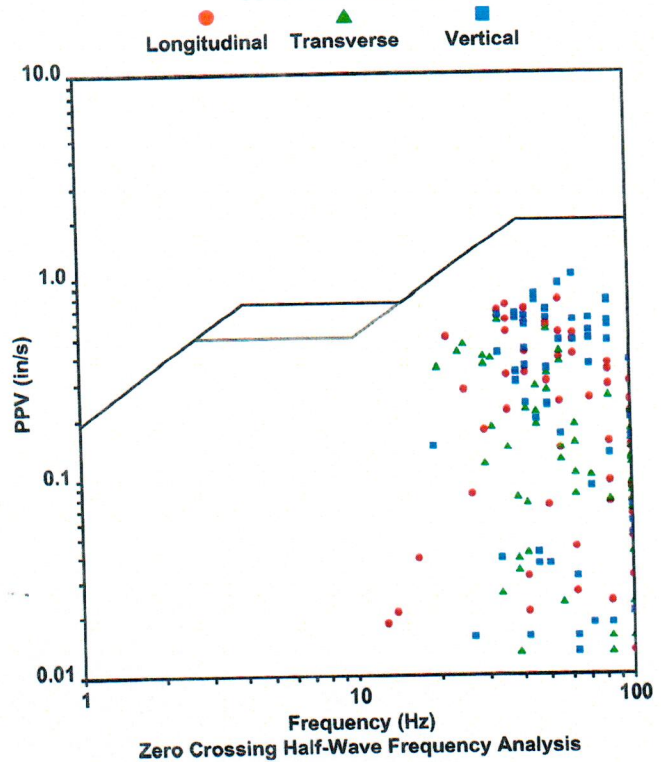
Peak Vector Sum: 1.228 in/s
Peak Air Pressure: 120.4 dB
 0.003 psi @ 55.6 HZ

Shaketable Calibrated

On: 06/01/2022 (UTC -04:00)
By: Vibra-Tech, Inc.
 2700 Holloway Road - Suite 113
 Louisville, KY 40203 U.S.A.

USBM Safe Blasting Levels

SSN: 11362 Event: 78

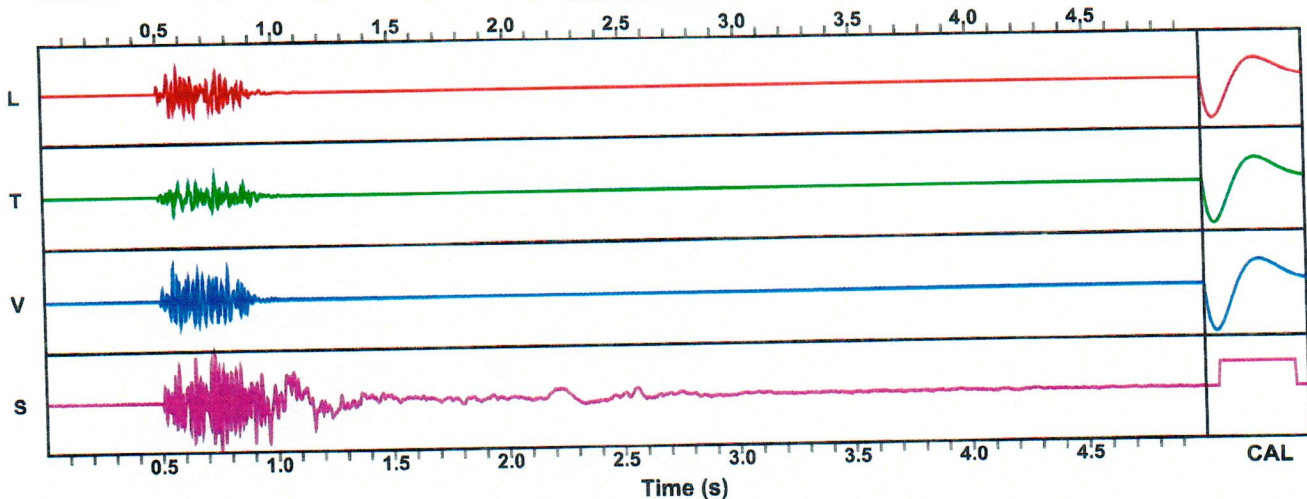


Waveform Graph Scale

Time Scale: 0.1 s
Seismic Scale: +/- 1.48125 in/s
Sound Scale: +/- 0.00331 psi

Velocity Waveform

SSN: 11362 Event: 78



Quarry Construction Site
 10 Broad St
 Pompton Lakes, New Jersey
 Seismo At:
 McPherson Hall

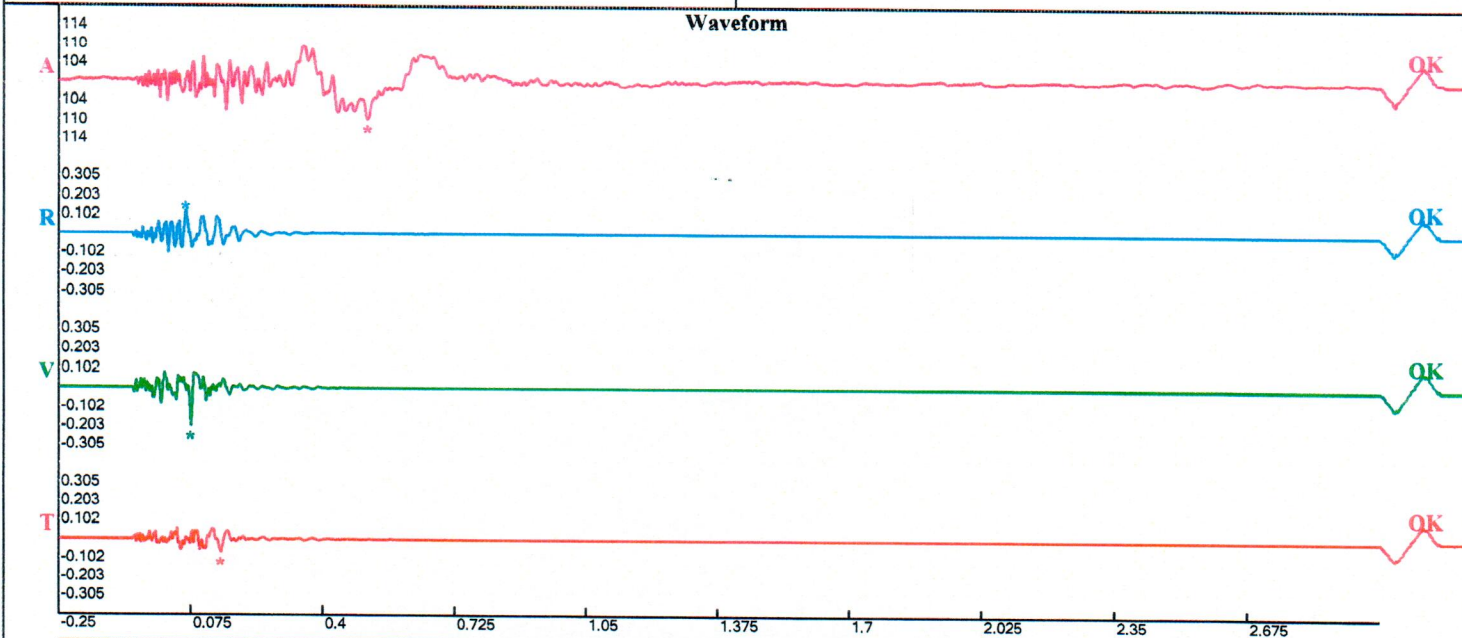
Record: 10072202303211200370205.proevt
 Number: 205
 Seismograph: Mini-Seis III Pro 10072
 Type of Record: Waveform
 Date: 3/21/2023 12:00:37 PM
 Duration: 3.25 Seconds
 Sample Rate: 4096
 Pre-Trigger: 0.25 Seconds
 Seismic Trigger: 0.065 in/s
 Acoustic Trigger: 115.0 dB
 Seismic Gain: 10.24
 Acoustic Gain: 148.2 dB
 Voltage: 6.39

Peaks and Frequencies

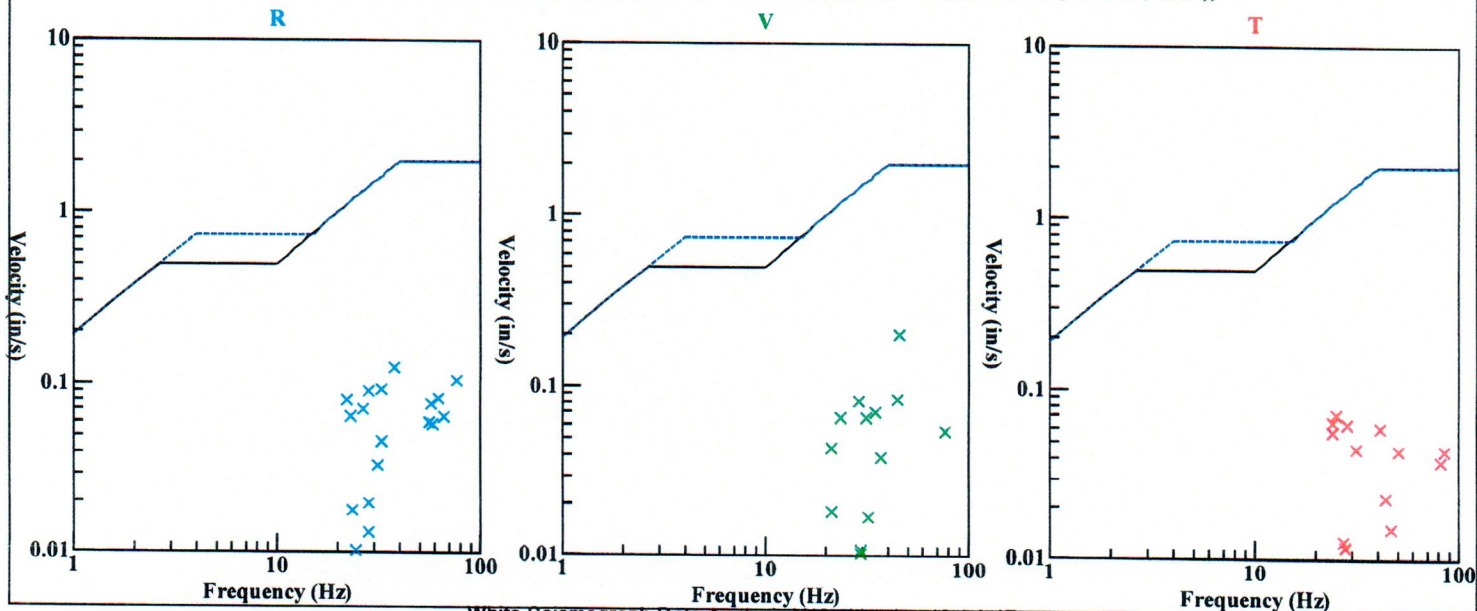
PPV Maximum (Geo #1): 0.203 in/s
 Acoustic #1: 110.3 dB @ 2.9 Hz (0.510498 s)
 Radial #1: 0.126 in/s @ 36.6 Hz (0.06274414 s)
 Vertical #1: 0.203 in/s @ 44.5 Hz (0.07495117 s)
 Transverse #1: 0.0728 in/s @ 24.1 Hz (0.1484375 s)
 Displacement (Geo #1): 0.000845 in
 Acceleration (Geo #1): 0.186 g's
 Last Calibration Date: 5/19/2022

Graph Information

Time Range: -0.25 s to 3 s, Intervals: 0.3250 Seconds



Velocity vs. Frequency (Particle Velocity Versus Frequency - USBM Limits (RI 8507, 1980))



Quarry Construction Site
 Broad St
 Merton Lakes, New Jersey
 Seismo At:
 McPherson Hall

Record: 10072202303231200230206.proevt
 Number: 206
 Seismograph: Mini-Seis III Pro 10072
 Type of Record: Waveform
 Date: 3/23/2023 12:00:23 PM
 Duration: 3.25 Seconds
 Sample Rate: 4096
 Pre-Trigger: 0.25 Seconds
 Seismic Trigger: 0.065 in/s
 Acoustic Trigger: 115.0 dB
 Seismic Gain: 10.24
 Acoustic Gain: 148.2 dB
 Voltage: 6.36

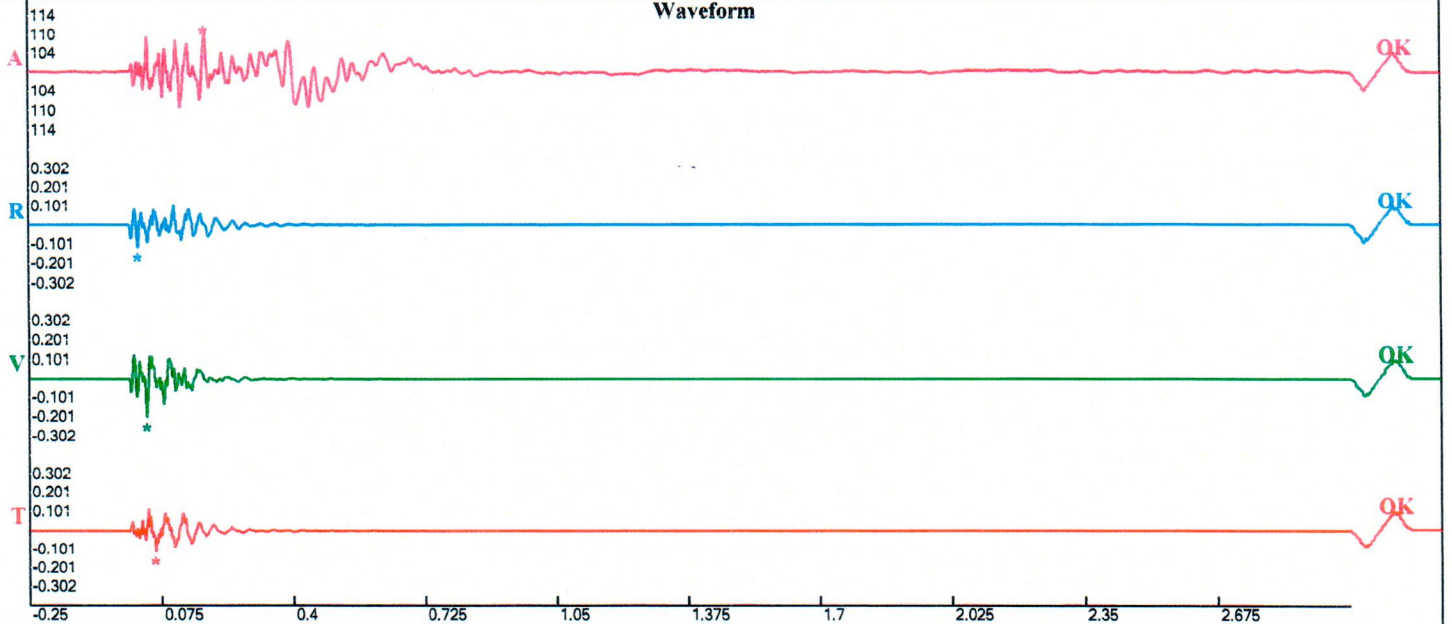
Peaks and Frequencies

PPV Maximum (Geo #1): 0.201 in/s
 Acoustic #1: 110.4 dB @ 37.2 Hz (0.1833496 s)
 Radial #1: 0.113 in/s @ 62.1 Hz (0.01855469 s)
 Vertical #1: 0.201 in/s @ 46.5 Hz (0.03930664 s)
 Transverse #1: 0.114 in/s @ 22.5 Hz (0.05981445 s)
 Displacement (Geo #1): 0.000795 in
 Acceleration (Geo #1): 0.219 g's
 Last Calibration Date: 5/19/2022

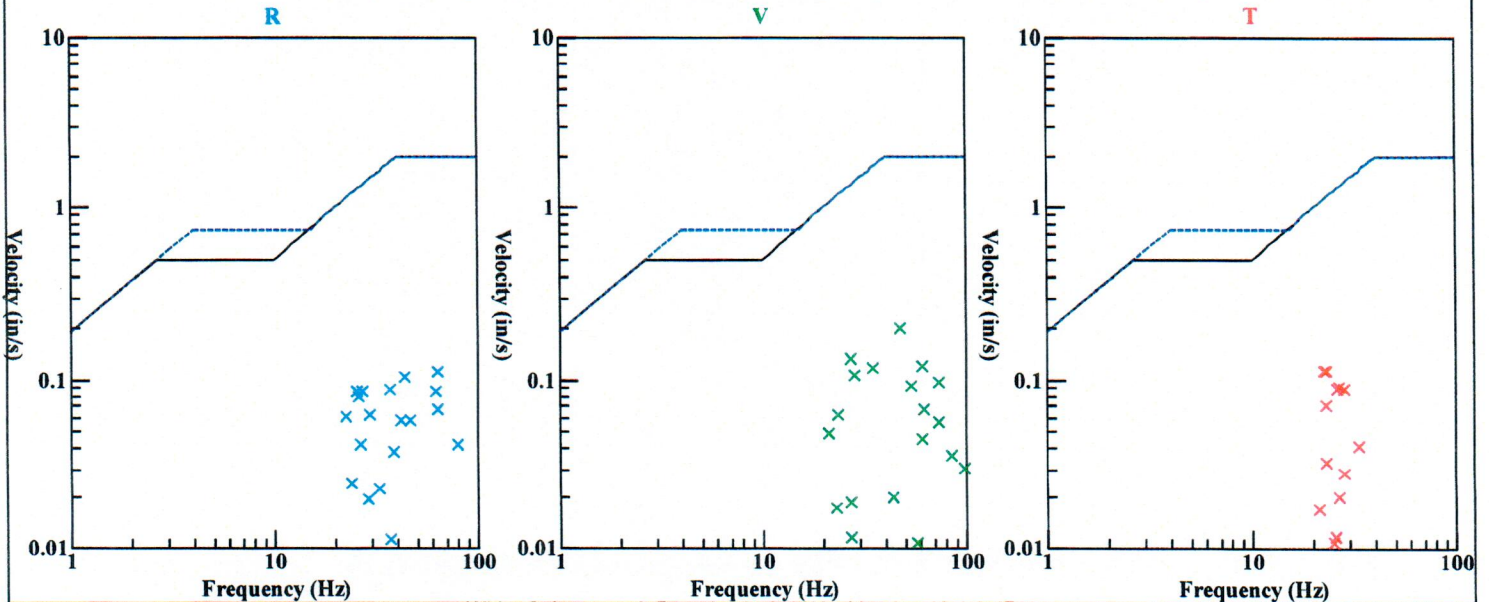
Graph Information

Time Range: -0.25 s to 3 s, Intervals: 0.3250 Seconds

Waveform



Velocity vs. Frequency (Particle Velocity Versus Frequency - USBM Limits (RI 8507, 1980))

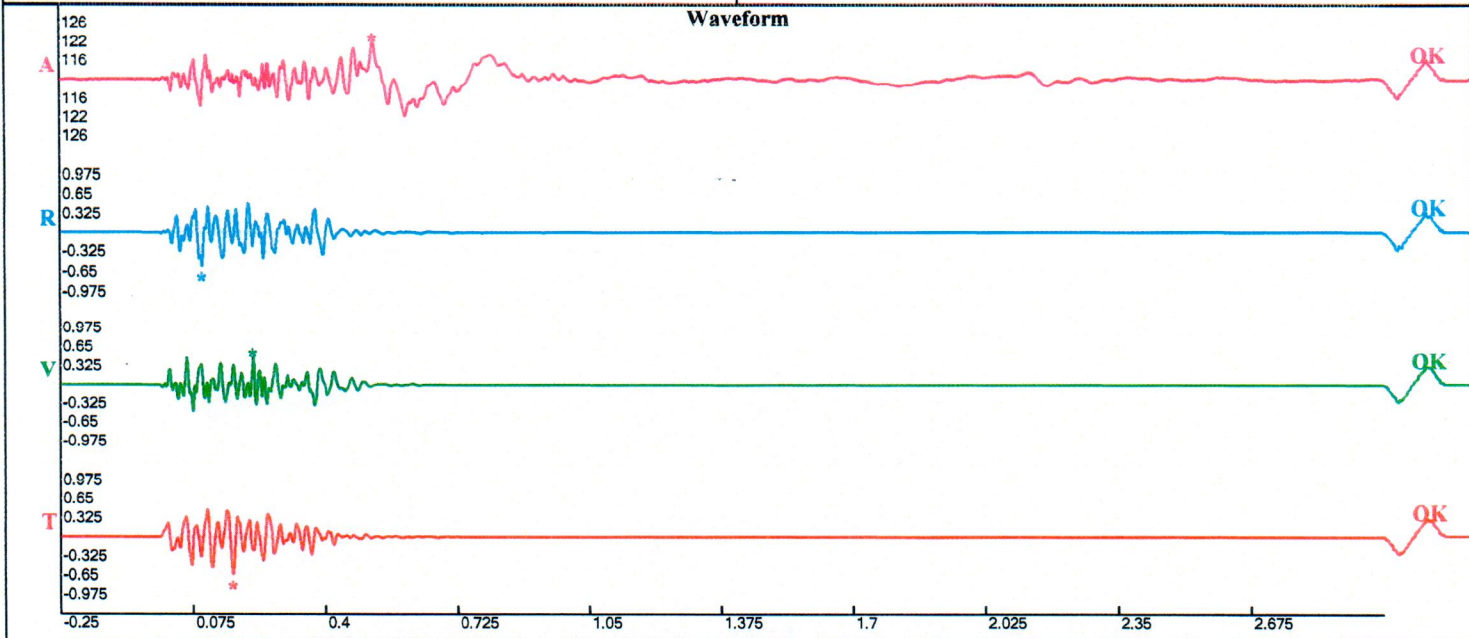


Quarry Construction Site
 Road St
 Supton Lakes, New Jersey
 Seismo At:
 McPherson Hall

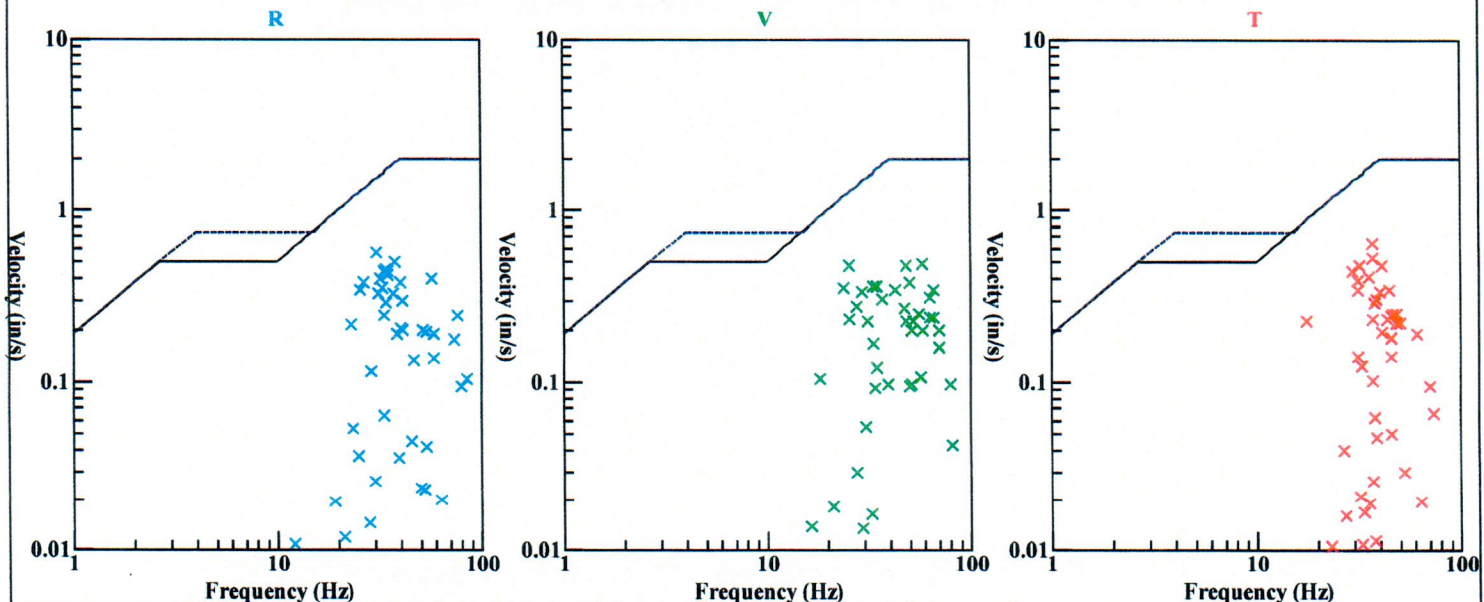
Record: 10072202303241100210207.proevt
 Number: 207
 Seismograph: Mini-Seis III Pro 10072
 Type of Record: Waveform
 Date: 3/24/2023 11:00:21 AM
 Duration: 3.25 Seconds
 Sample Rate: 4096
 Pre-Trigger: 0.25 Seconds
 Seismic Trigger: 0.065 in/s
 Acoustic Trigger: 115.0 dB
 Seismic Gain: 10.24
 Acoustic Gain: 148.2 dB
 Voltage: 6.32

Peaks and Frequencies
 PPV Maximum (Geo #1): 0.65 in/s
 Acoustic #1: 122.3 dB @ 6.3 Hz (0.5195313 s)
 Radial #1: 0.559 in/s @ 30.6 Hz (0.09863281 s)
 Vertical #1: 0.483 in/s @ 58.5 Hz (0.2241211 s)
 Transverse #1: 0.65 in/s @ 36.6 Hz (0.1721191 s)
 Displacement (Geo #1): 0.00332 in
 Acceleration (Geo #1): 0.565 g's
 Last Calibration Date: 5/19/2022

Graph Information
 Time Range: -0.25 s to 3 s, Intervals: 0.3250 Seconds



Velocity vs. Frequency (Particle Velocity Versus Frequency - USBM Limits (RI 8507, 1980))

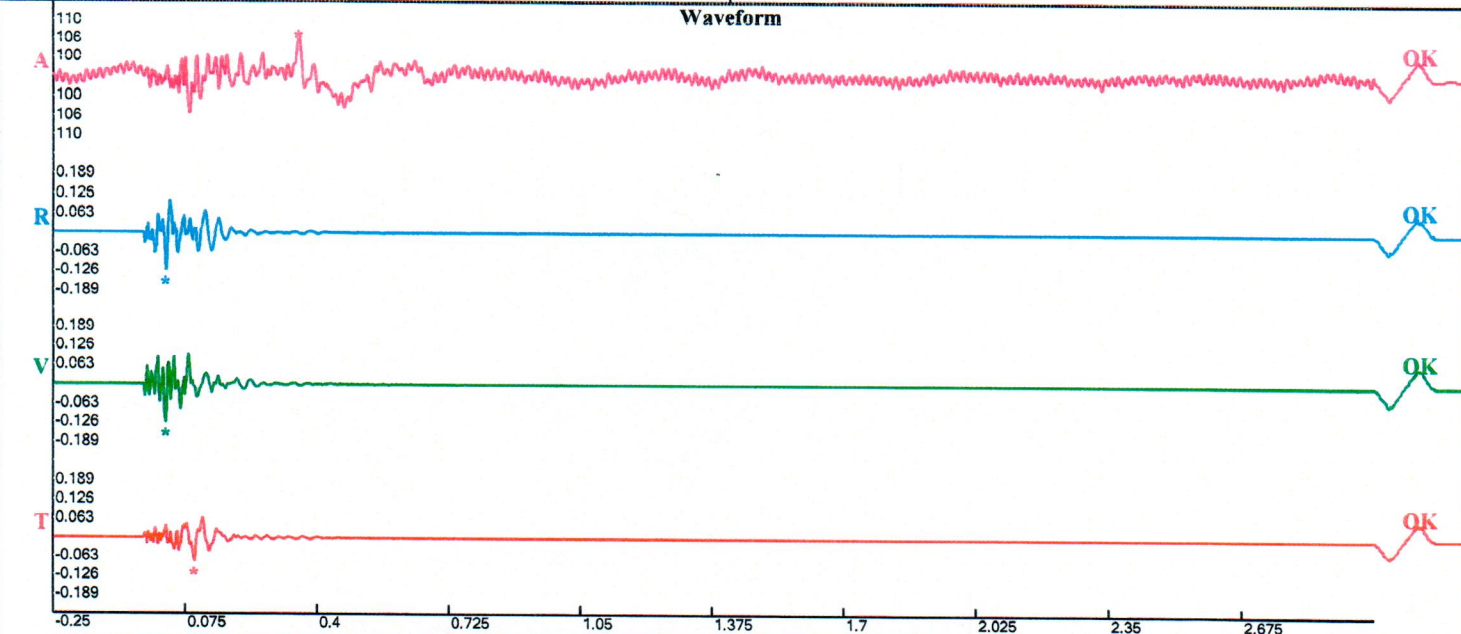


Quarry Construction Site
 Broad St
 Hampton Lakes, New Jersey
 Seismo At:
 McPherson Hall

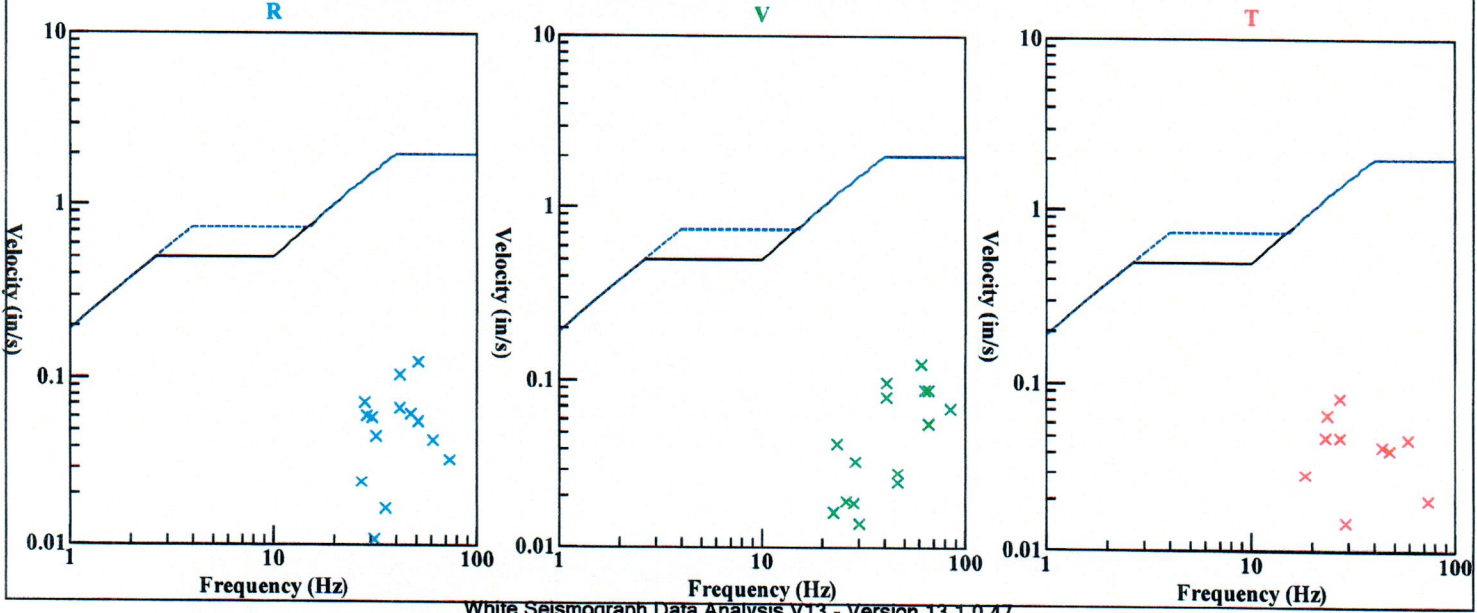
Record: 10072202303281230120208.proevt
 Number: 208
 Seismograph: Mini-Seis III Pro 10072
 Type of Record: Waveform
 Date: 3/28/2023 12:30:12 PM
 Duration: 3.25 Seconds
 Sample Rate: 4096
 Pre-Trigger: 0.25 Seconds
 Seismic Trigger: 0.065 in/s
 Acoustic Trigger: 115.0 dB
 Seismic Gain: 10.24
 Acoustic Gain: 148.2 dB
 Voltage: 6.45

Peaks and Frequencies
 PPV Maximum (Geo #1): 0.126 in/s
 Acoustic #1: 106.1 dB @ 17.7 Hz (0.354248 s)
 Radial #1: 0.124 in/s @ 51.2 Hz (0.02783203 s)
 Vertical #1: 0.126 in/s @ 58.5 Hz (0.02709961 s)
 Transverse #1: 0.0828 in/s @ 26.6 Hz (0.09716797 s)
 Displacement (Geo #1): 0.000705 in
 Acceleration (Geo #1): 0.177 g's
 Last Calibration Date: 5/19/2022

Graph Information
 Time Range: -0.25 s to 3 s, Intervals: 0.3250 Seconds



Velocity vs. Frequency (Particle Velocity Versus Frequency - USBM Limits (RI 8507, 1980))



Seismic Analysis

Velocity Waveform Analysis

Serial Number: 11248
Firmware Version: 0C-10.29
Event Date: 03/31/2023 10:30:06 (UTC -04:00)
Event number: 11
Recording Time: 10 s
Client: Tilcon NJ
Operation: Pompton Lakes Quarry
Location: 211 Hamburg Turnpike
Distance:
Operator: Vibra-Tech Engineers
Comment: 150
Seismic Trigger: 0.03 in/s
Sound Trigger: 123.5 dB

Additional Info: -of building
 j-GEO-19770
 N41 00.064, W074 18.899

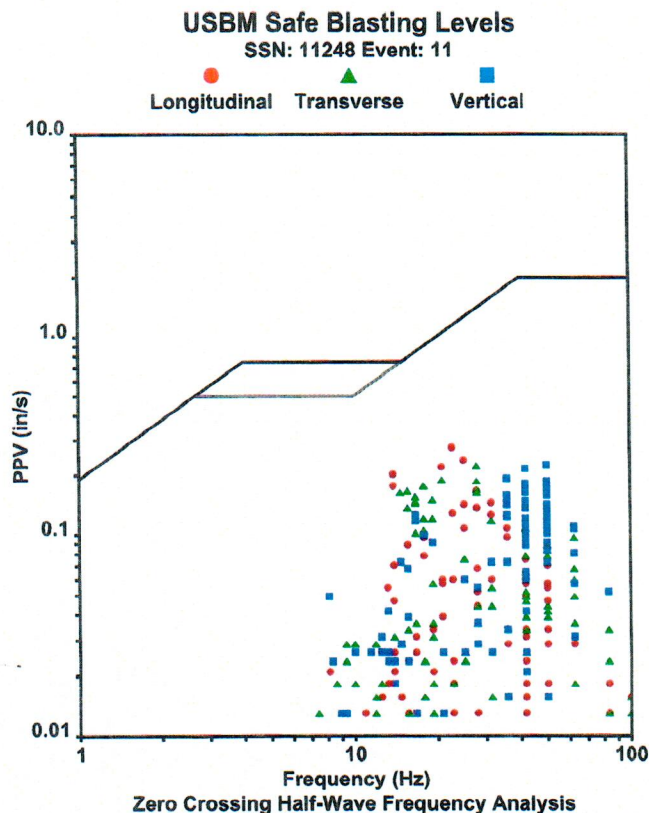
Summary Data

	L	T	V
PPV (in/s):	0.2625	0.2125	0.215
FREQ (HZ):	22.7	27.8	41.7
PD (.001"):	1.815	1.765	0.965
PPA (g):	0.09766	0.09115	0.1628

Peak Vector Sum: 0.2825 in/s
Peak Air Pressure: 109.3 dB
 0.0008 psi @ 10 HZ

Shaketable Calibrated

On: 08/09/2022 (UTC -04:00)
By: Vibra-Tech, Inc.
 2700 Holloway Road - Suite 113
 Louisville, KY 40203 U.S.A.

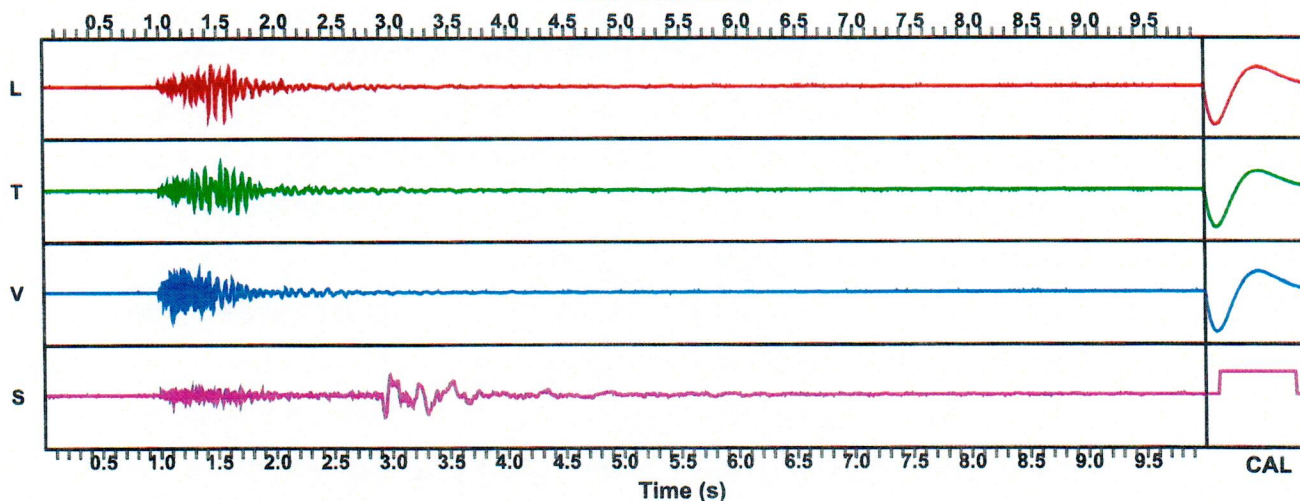


Waveform Graph Scale

Time Scale: 0.1 s
Seismic Scale: +/- 0.39375 in/s
Sound Scale: +/- 0.0023 psi

Velocity Waveform

SSN: 11248 Event: 11



Quarry Construction Site
 10 Broad St
 Pompton Lakes, New Jersey
 Seismo At:
 McPherson Hall

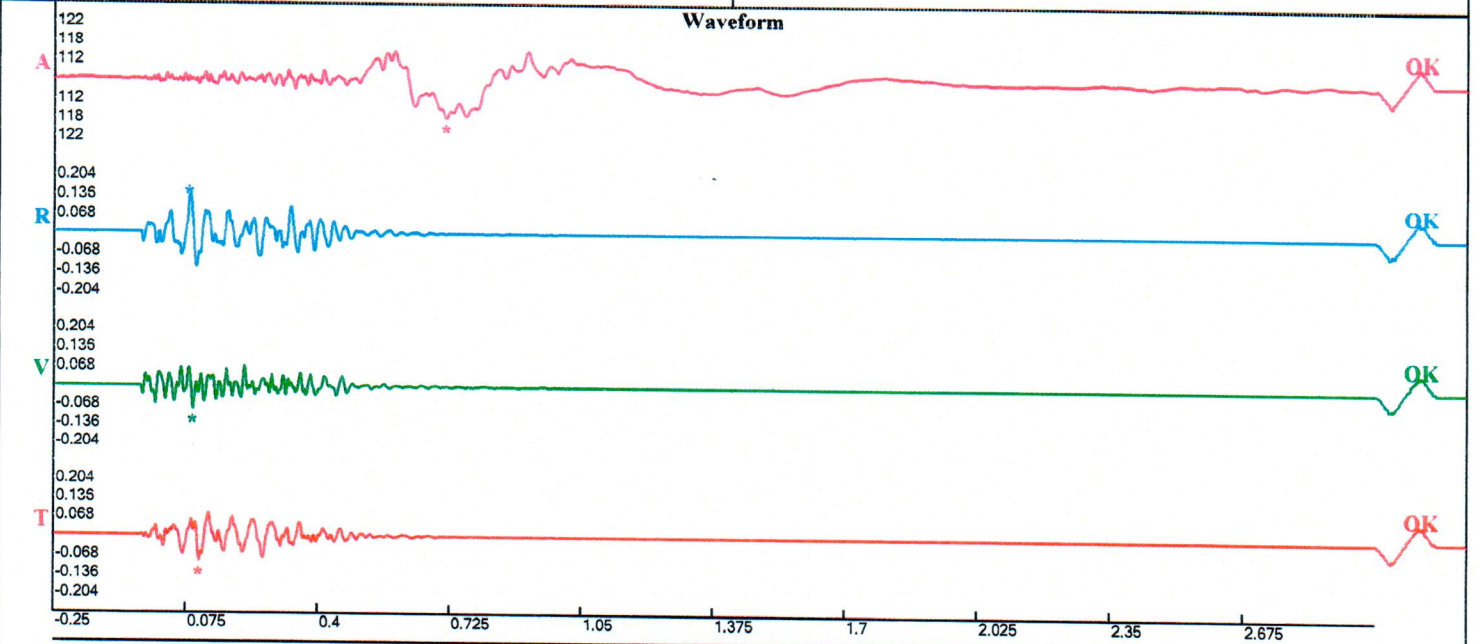
Record: 10072202303311245140210.proevt
 Number: 210
 Seismograph: Mini-Seis III Pro 10072
 Type of Record: Waveform
 Date: 3/31/2023 12:45:14 PM
 Duration: 3.25 Seconds
 Sample Rate: 4096
 Pre-Trigger: 0.25 Seconds
 Seismic Trigger: 0.065 in/s
 Acoustic Trigger: 115.0 dB
 Seismic Gain: 10.24
 Acoustic Gain: 148.2 dB
 Voltage: 6.52

Peaks and Frequencies

PPV Maximum (Geo #1): 0.136 in/s
 Acoustic #1: 117.6 dB @ 2.5 Hz (0.713623 s)
 Radial #1: 0.136 in/s @ 25.9 Hz (0.08398438 s)
 Vertical #1: 0.085 in/s @ 43.6 Hz (0.0925293 s)
 Transverse #1: 0.0906 in/s @ 26.3 Hz (0.1079102 s)
 Displacement (Geo #1): 0.000812 in
 Acceleration (Geo #1): 0.0812 g's
 Last Calibration Date: 5/19/2022

Graph Information

Time Range: -0.25 s to 3 s, Intervals: 0.3250 Seconds



Velocity vs. Frequency (Particle Velocity Versus Frequency - USBM Limits (RI 8507, 1980))

